



## Charleville Mews, TW7

£385,000

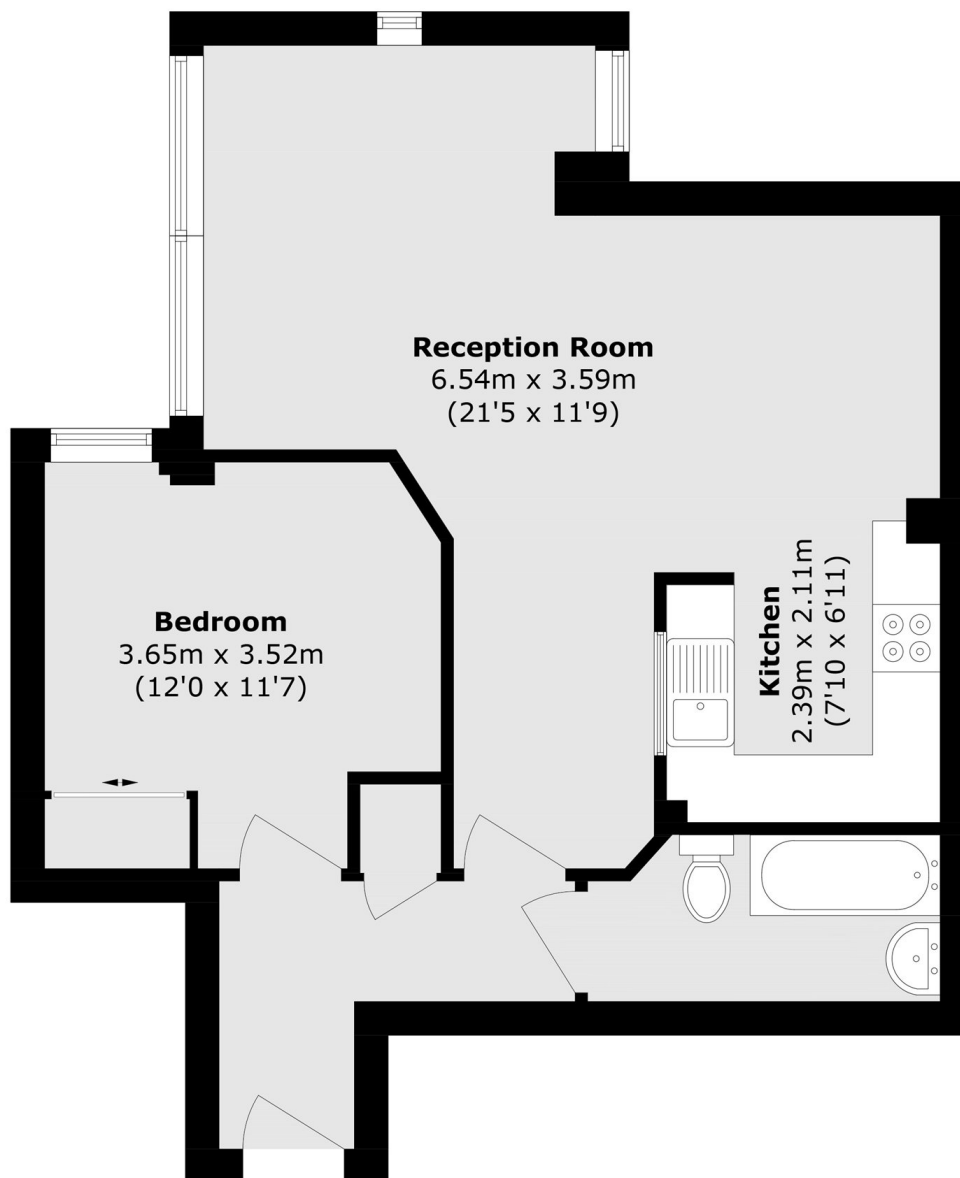
A beautifully presented one bedroom second floor apartment in a purpose built building directly overlooking the river. With allocated off-street parking, communal bike storage and direct river views, this property is not to be missed out on.

Located on the River Thames with its tow path stroll into Richmond with its mainline train station and the district line service. St Margarets village with its boutique shops and restaurants is only 0.7 miles away. Syon Park and Redlees Park are close by.

### Features

- One Bedroom
- Allocated Off-Street Parking
- Direct River Views
- Second Floor
- No Onward Chain
- Secure Bicycle Storage

# Charleville Mews, Old Isleworth, TW7



Total area (approx.): 57.4 sq. m (617.8 sq. ft)