

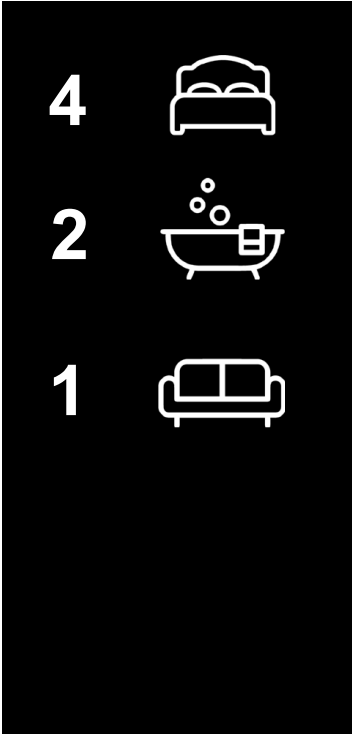
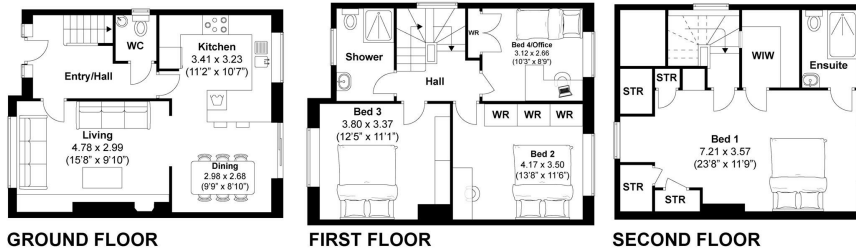
FERMERS



£749,950
Mill Drive
Hove, BN3 6WB

EPC RATING: COUNCIL TAX BAND:

Mill Drive, Hove
Approximately 133 sqm (1432 sqft)



Disclaimer:
The measurements are approximate and are for illustration purposes only.
The dimensions are measured internally and in metres and feet. We do not take any responsibility for errors and/or omissions.
If you require further verification please discuss with the buyer/owner of the property.



Energy Efficiency Rating		Current	Potential
Very energy efficient - lower running costs			
(92 plus)	A		
(81-91)	B		
(69-80)	C		
(55-68)	D		
(39-54)	E		
(21-38)	F		
(1-20)	G		
Not energy efficient - higher running costs			
England & Wales		EU Directive 2002/91/EC	

Agents Note: Whilst every care has been taken to prepare these particulars, they are for guidance purposes only. All measurements are approximate and are for general guidance purposes only and whilst every care has been taken to ensure their accuracy, they should not be relied upon and potential buyers/tenants are advised to recheck the measurements

FERMERS

OFFICE ADDRESS
67 Queen Victoria Avenue
Hove
East Sussex
BN3 6XA

OFFICE DETAILS
01273 541 177
sales@fermers.co.uk
www.Fermers.co.uk