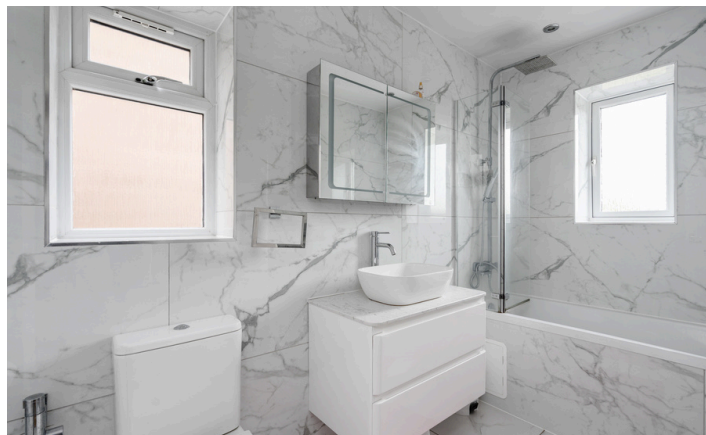


**Need a Mortgage in principle to make offers?** Call us now for quick assistance!  
**0121 775 0101**



**Do you need to sell? Start your journey now!** Call us we can help.  
**0121 775 0101**



**SCAN FOR MORE INFO**  
**SIZE** - 1760 Sq Ft  
**TENURE** - Freehold  
**COUNCIL TAX** - Solihull Metropolitan Borough Council - F  
**BROADBAND** - Upload Max 1000Mbps Download Max 1800Mbps  
**MOBILE SERVICES** - 3 - 84%, EE - 82%, O2 - 80%, Vodafone - 78%  
**EPC** - TBC  
**PARKING** - For at least 2 Cars  
**FLOODRISK** - Very Low  
**SERVICES** - Mains  
**COVENANTS** - N/A

**78 Ferndown Road**  
**Solihull, B91 2BA**  
**Offers in Excess of £685,000**

Situated in a popular area of Solihull, this impressive detached house presents an ideal family home, offering both space and comfort. This extended family home is situated in a popular location, making it an excellent choice for those seeking a blend of convenience and tranquillity.

**FEATURES**

- Spacious Detached Family Home
- Lounge with Bay Window
- Versatile Second Reception Room
- Large Open Plan Kitchen/Dining/Utility Room
- Principal Bedroom with En-Suite Shower Room
- Two Further Double Bedrooms with Fitted Wardrobes
- Fourth Single Bedroom/Nursery/Study
- Modern Family Bathroom
- Private Rear Garden
- Driveway Parking & Single Garage
- EV Car Charging Point & Solar Panels
- Convenient Location

**Are you an investor interested in expanding your portfolio?**

**Call 0121 775 0101 to provide your investment criteria for alerts.**



**SCAN TO VIEW OUR WEEKLY FILMS & SUBSCRIBE**

**Sneak Peeks**

Every week, we unveil "Sneak Peeks," a feature showcasing exclusive properties before they hit Rightmove and other platforms.

**The Landlord Club**

Join our Landlord Club for weekly updates on legislation, market trends, and our Letting Director's 'Investment Pick of the Week' for optimal ROI.

**HTSPMD**

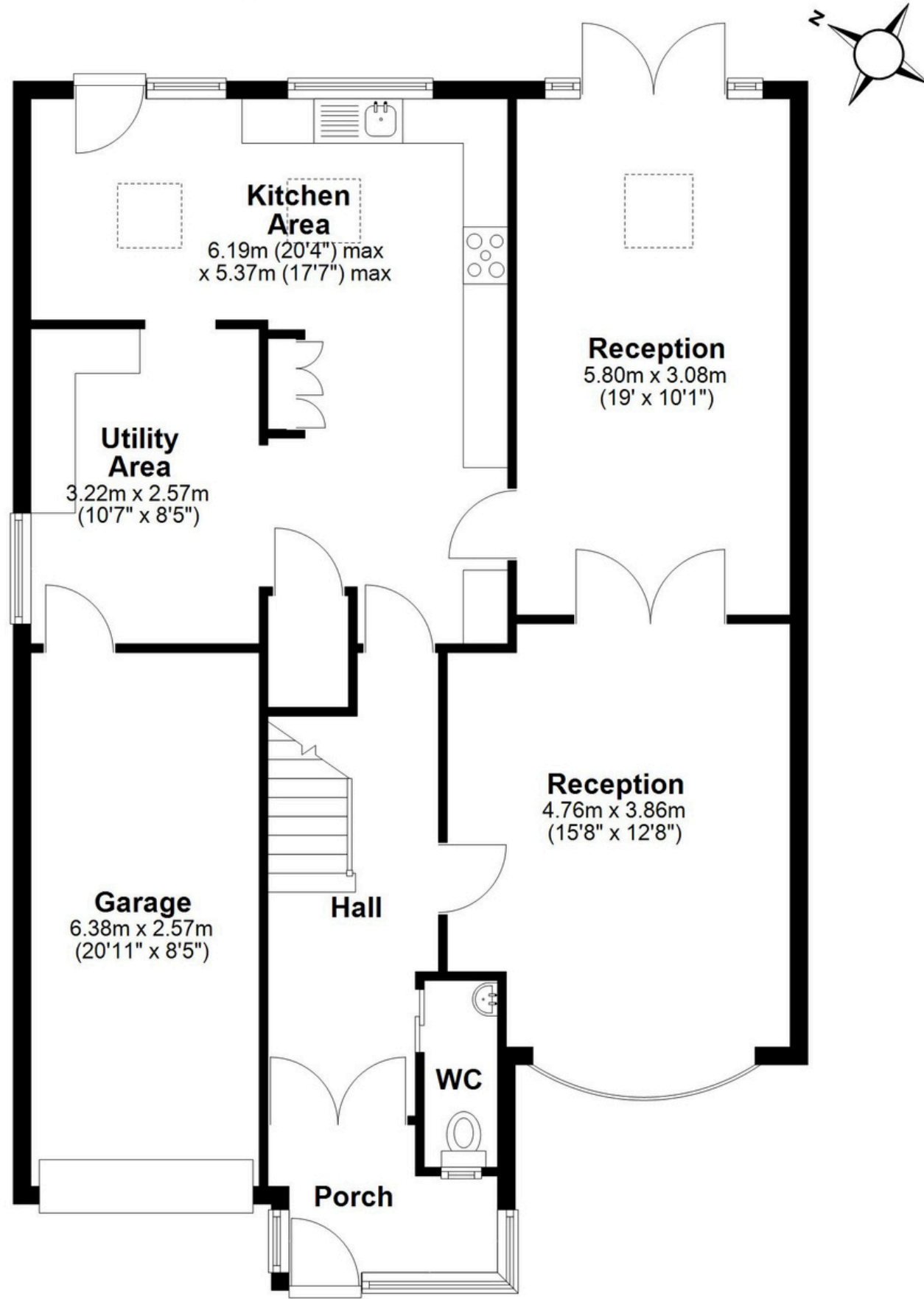
Tune into 'How's The Solihull Property Market Dom' weekly for a quick, insightful snapshot of the market.

**The Mortgage Update**

Get weekly insights and the best deals with our Mortgage Update, your shortcut to navigating the complex mortgage landscape confidently.

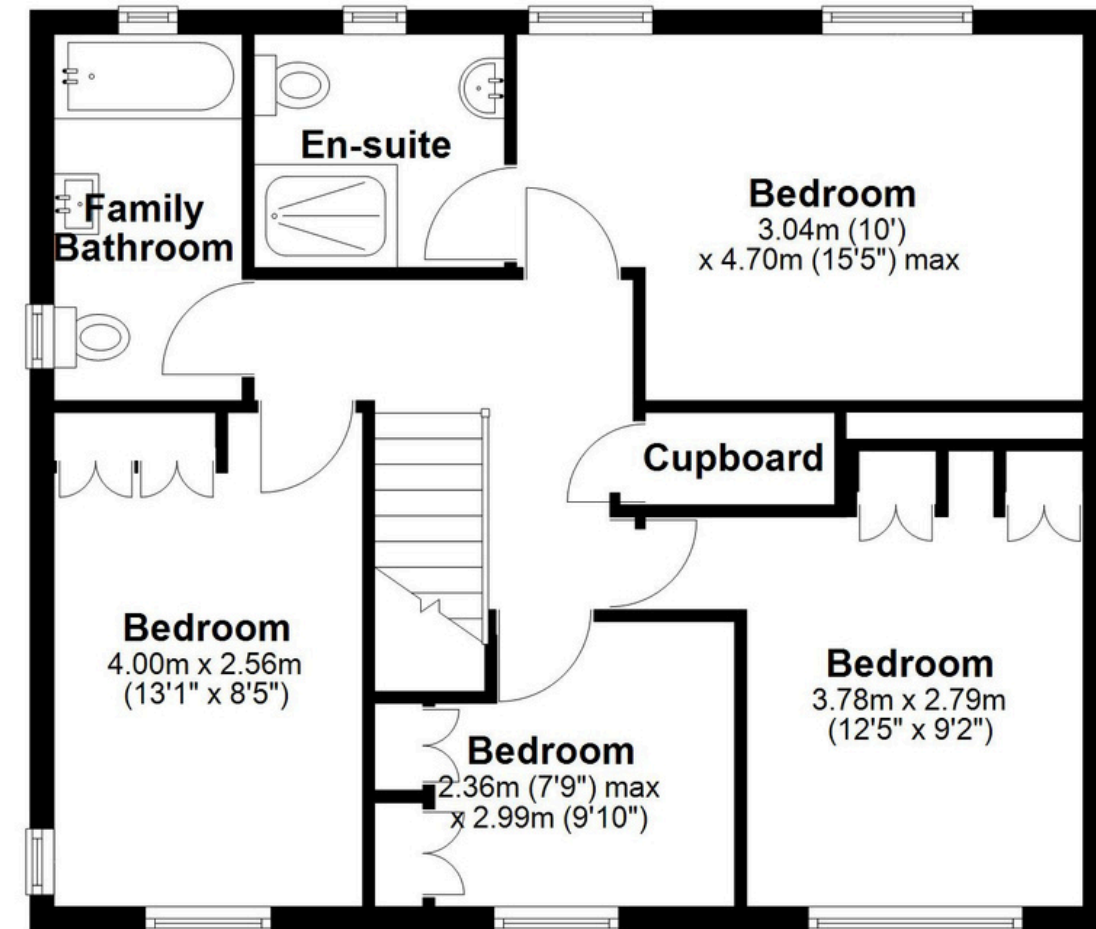
## Ground Floor

Approx. 102.1 sq. metres (1099.3 sq. feet)



## First Floor

Approx. 61.4 sq. metres (661.3 sq. feet)



Total area: approx. 163.6 sq. metres (1760.6 sq. feet)

This floor plan is for illustration purposes only, this is not intended to be a measured/scaled survey or comply with RICS guidelines. All measurements (including total floor area) openings, orientation and floor area are approximate. No details are guaranteed, they cannot be relied upon for any purpose and do not form part of any agreement. A party must rely upon its own inspection(s). No responsibility is taken for any error, omission, or mis-statement.  
Plan produced using PlanUp.