



Parkville Road, SW6

£650,000

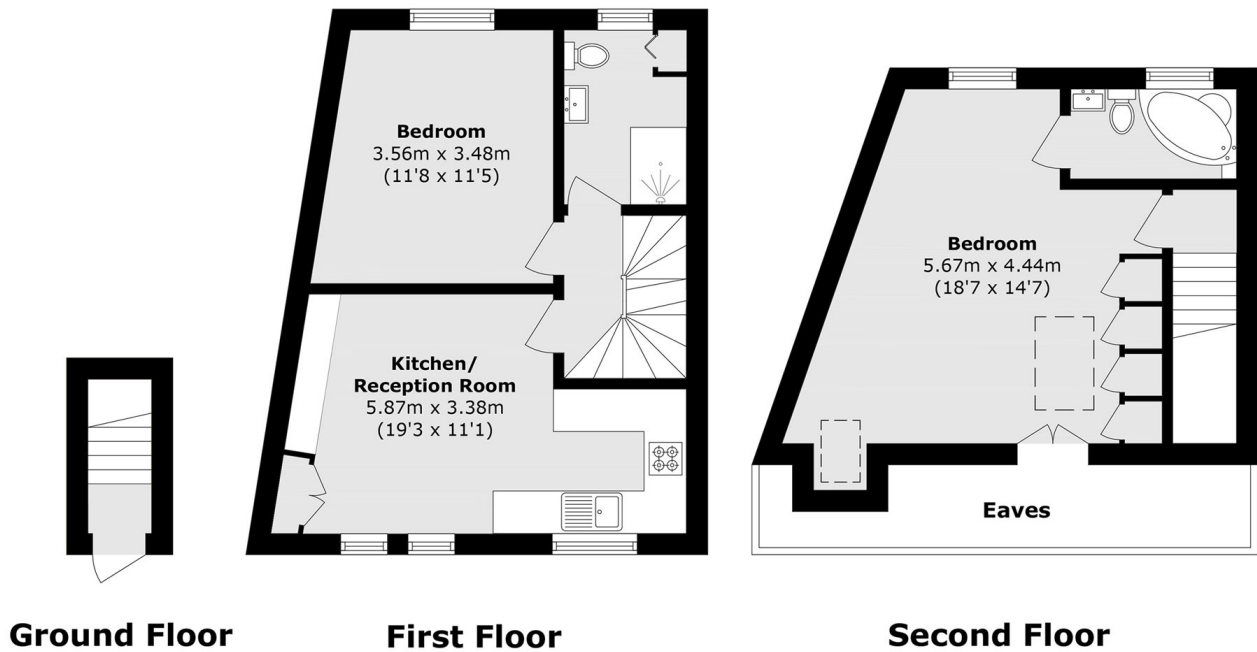
Set within a charming end-of-terrace Victorian conversion, this split-level apartment offers an elevated layout over two floors. The property features a bright, open plan kitchen/reception, two large double bedrooms, two bathrooms, and excellent storage throughout.

Located within the sought after location of the 'Villes', the property is well situated between the amenities and transport links of both Fulham Broadway and Parsons Green.

Features

- Two Double Bedrooms
- Open Plan Kitchen/Reception
- Share Of Freehold
- Two Bathrooms
- Split-Level
- The Villes

Parkville Road,
London, SW6



Total area (approx.): 68.0 sq. m (732.0 sq. ft)
(Excluding Eaves)