



Cromwell Road, SW7

£660 Per week

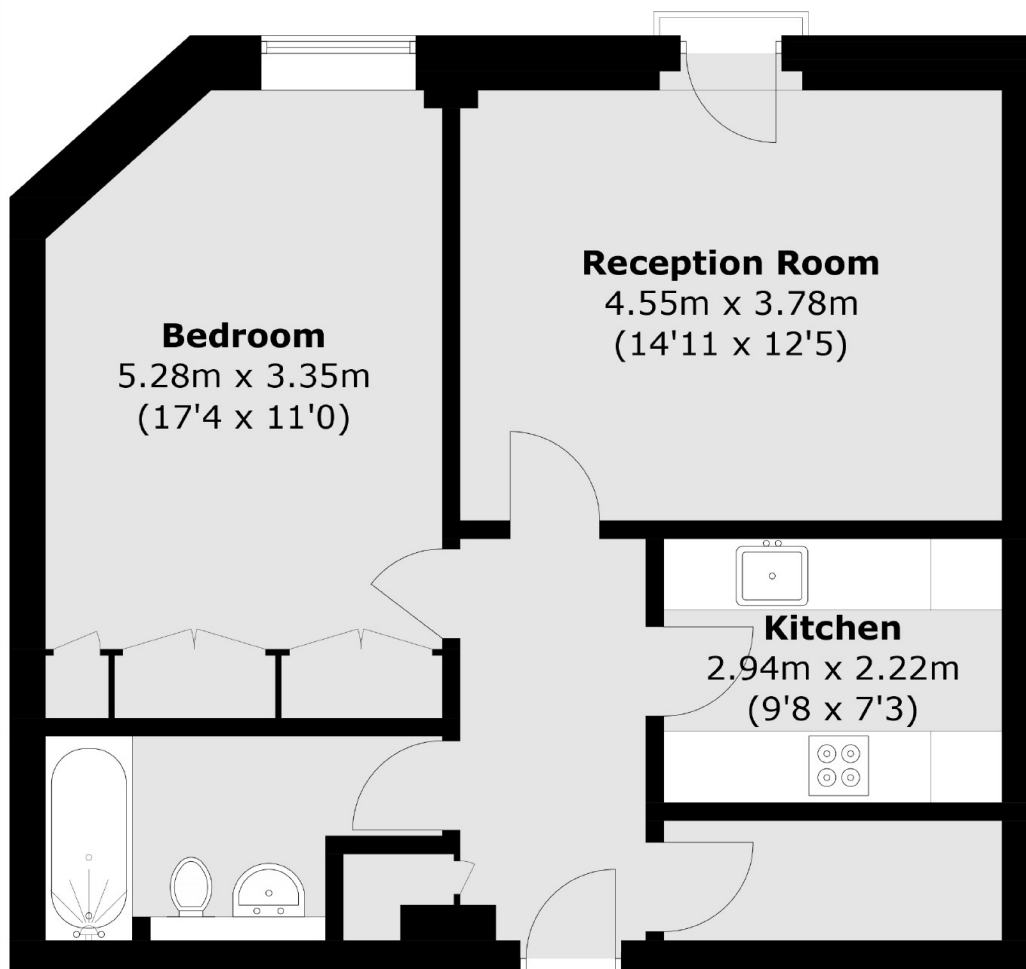
A one bedroom apartment situated on the ninth floor with lift of this well-located, 24-hour portered building with a residents' gym, just moments from Gloucester Road and its amenities.

The property is conveniently located just a short distance from Gloucester Road Station, with shops such as Waitrose and Sainsbury's close by, and Hyde Park also within easy reach.

Features

- Large One Bedroom
- Great Storage
- Modern Kitchen
- 24-hour Porter
- Gloucester Road Station
- Lift Access

Cromwell Road,
London, SW7



Total area (approx.): 57.0 sq. m (613.5 sq. ft)

Dexters

South Kensington
144 Old Brompton Road
London
SW7 4NR
Lettings
020 7244 7711

Energy Rating: B. We aim to make our particulars both accurate and reliable. However they are not guaranteed; nor do they form part of an offer or contract. If you require clarification on any points then please contact us, especially if you're traveling some distance to view. Please note that appliances and heating systems have not been tested and therefore no warranties can be given as to their good working order.

 **RICS** | Regulated
Estate Agent
and Letting Agent

dexters.co.uk