



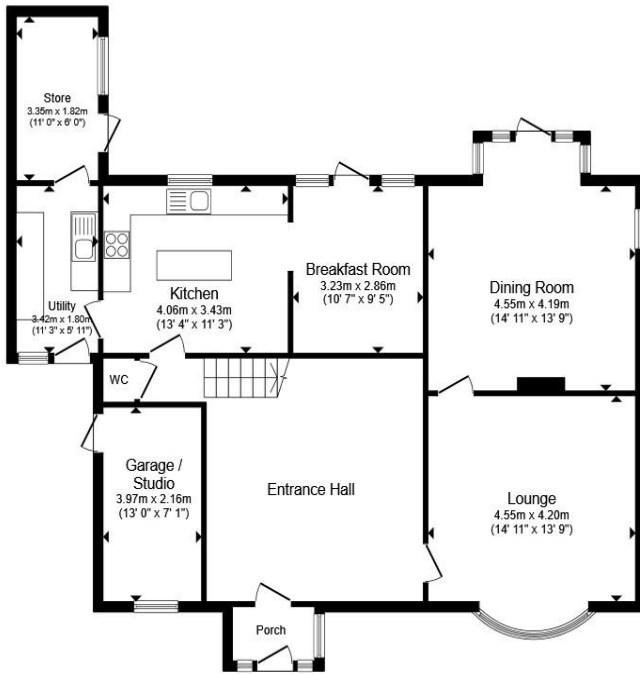
South Cliff Avenue, Bexhill-On-Sea TN39 3EB

welcome to

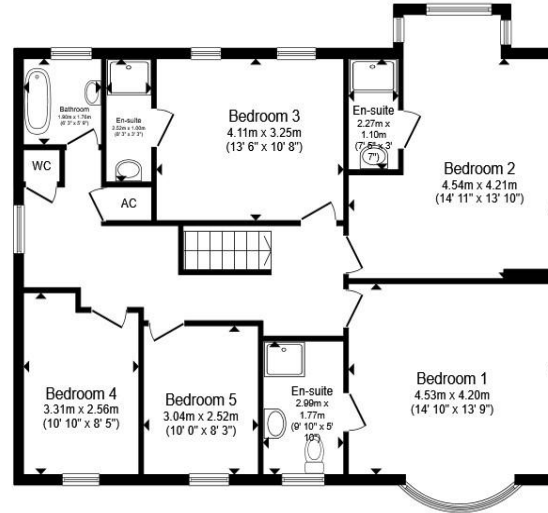
South Cliff Avenue, Bexhill-On-Sea

NEW TO THE MARKET is this incredible FIVE BEDROOM DETACHED HOUSE positioned in the highly-desirable South Cliff area of Bexhill-On-Sea. Offered to the market in a brilliant condition throughout. Viewing advised.

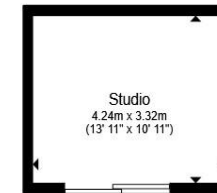




Ground Floor



First Floor



Outbuilding

Entrance Porch & Hallway

Lounge

14' 11" x 13' 9" (4.55m x 4.19m)

Kitchen

13' 4" x 11' 3" (4.06m x 3.43m)

Dining Room

14' 11" x 13' 9" (4.55m x 4.19m)

Breakfast Room

10' 7" x 9' 5" (3.23m x 2.87m)

Utility

11' 11" x 11' 8" (3.63m x 3.56m)

Store Area

11' x 6' (3.35m x 1.83m)

Bedroom One

14' 10" x 13' 9" (4.52m x 4.19m)

En-Suite

Bedroom Two

14' 11" x 13' 10" (4.55m x 4.22m)

En-Suite

Bedroom Three

13' 6" x 10' 8" (4.11m x 3.25m)

En-Suite

Bedroom Four

10' 10" x 8' 5" (3.30m x 2.57m)

Bedroom Five

10' x 8' 3" (3.05m x 2.51m)

Family Bathroom

External Studio

13' 11" x 10' 11" (4.24m x 3.33m)

Garage / Studio

13' x 7' 1" (3.96m x 2.16m)

Total floor area 233.6 m² (2,515 sq.ft.) approx

This floor plan is for illustrative purposes only. It is not drawn to scale. Any measurements, floor areas (including any total floor area), openings and orientation are approximate. No details are guaranteed, they cannot be relied upon for any purpose and they do not form part of any agreement. No liability is taken for any error, omission or misstatement. A party must rely upon its own inspection(s). Powered by www.propertybox.io



welcome to

South Cliff Avenue, Bexhill-On-Sea

- Substantial Detached Family Home
- Five Bedrooms
- Three En-Suite Shower Rooms
- Multiple Reception Rooms
- Brilliant Condition Throughout

Tenure: Freehold EPC Rating: C
Council Tax Band: F

£950,000



Please note the marker reflects the
postcode not the actual property

view this property online fox-and-sons.co.uk/Property/BOS113268



Property Ref:
BOS113268 - 0005

1. MONEY LAUNDERING REGULATIONS Intending purchasers will be asked to produce identification documentation at a later stage and we would ask for your co-operation in order that there is no delay in agreeing the sale. 2. These particulars do not constitute part or all of an offer or contract. 3. The measurements indicated are supplied for guidance only and as such must be considered incorrect. Potential buyers are advised to recheck measurements before committing to any expense. 4. We have not tested any apparatus, equipment, fixtures or services and it is in the buyers interest to check the working condition of any appliances. 5. Where an EPC, or a Home Report (Scotland only) is held for this property, it is available for inspection at the branch by appointment. If you require a printed version of a Home Report, you will need to pay a reasonable production charge reflecting printing and other costs. 6. We are not able to offer an opinion either written or verbal on the content of these reports and this must be obtained from your legal representative. 7. Whilst we take care in preparing these reports, a buyer should ensure that his/her legal representative confirms as soon as possible all matters relating to title including the extent and boundaries of the property and other important matters before exchange of contracts.


fox & sons



01424 224243



BexhillonSea@fox-and-sons.co.uk



1 Devonshire Square, BEXHILL-ON-SEA, East
Sussex, TN40 1AB



fox-and-sons.co.uk