

EMSLEY  MAVOR
ESTATE AGENTS

...your home is where our heart is



Raskelf Road
, Easingwold, YO61 3JY
£525,000



Raskelf Road

, Easingwold, YO61 3JY

STYLE - Charming Detached Bungalow
HIGHLIGHTS - Close to the Market Place, Two Reception Rooms, Breakfast Kitchen Utility, Three Bedrooms. Generous Sized Plot, Private Garden. Garage, Off Street Parking.
THREE WORDS - Versatile. Space. Location.

Charming Bungalow Awaits Your Personal Touch

Nestled in the picturesque setting of Easingwold, Stepping Stones on Raskelf Road is a delightful stone-built detached bungalow that offers a perfect blend of charm and potential. This lovely home is ideally situated, providing a peaceful retreat while still being conveniently close to local amenities.

STEP INSIDE

Step inside to the entrance hallway to discover a light and airy sitting room, where natural light floods through, creating a warm and inviting atmosphere. There is also a snug, perfect for cosy evenings, with French doors that seamlessly connect the indoors to the garden, inviting the outside in. The heart of the home is undoubtedly the dining kitchen, a spacious area perfect for family meals and entertaining. A convenient utility room adds practicality to the everyday, making household chores a breeze.

BEDROOMS

The bungalow boasts a main bedroom complete with fitted wardrobes, offering ample storage space. A second double bedroom and a third single room provide versatility, whether for family, guests, or a home office. The family bathroom is well-appointed, catering to all your needs





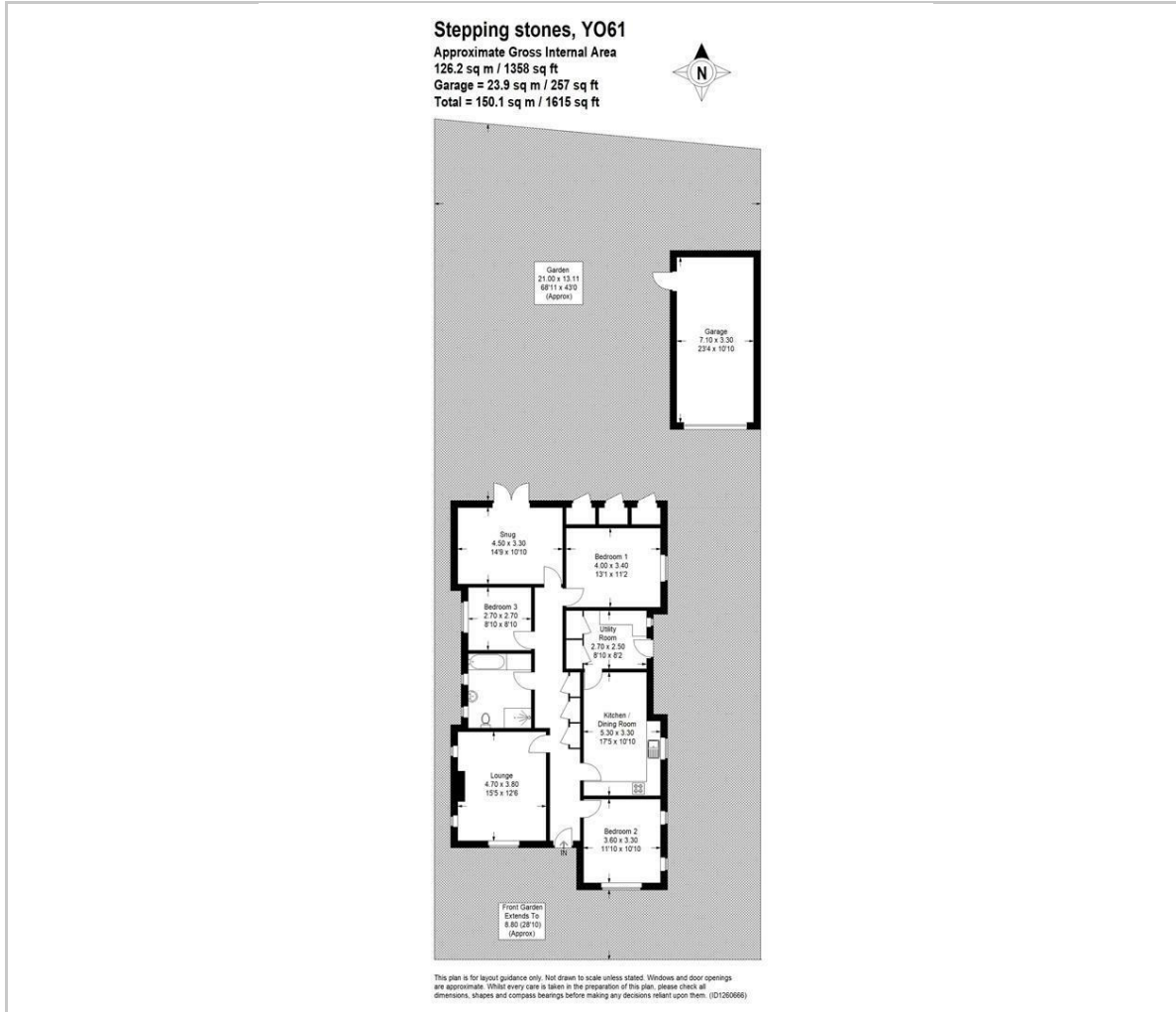
GARDENS

Outside, the property truly shines. The front features a driveway and pebbled parking area, accommodating numerous cars with ease. The enclosed lawned garden at the rear is a blank canvas, ready for you to create your own outdoor haven. Whether you envision a vibrant flower garden, a vegetable patch, or a tranquil seating area, the possibilities are endless. An outside tap and a garage add further convenience to this charming home.

Stepping Stones presents a wonderful opportunity for those looking to make a house their own. With its characterful features and superb location, it's a home that promises both comfort and potential. Don't miss your chance to view this delightful property and imagine the possibilities it holds.

Some of the marketing images have been digitally enhanced using AI technology to showcase the property's potential and possible future appearance. These images are for illustrative purposes only and should not be relied upon as an exact representation of the property in its current state.

Floor Plan



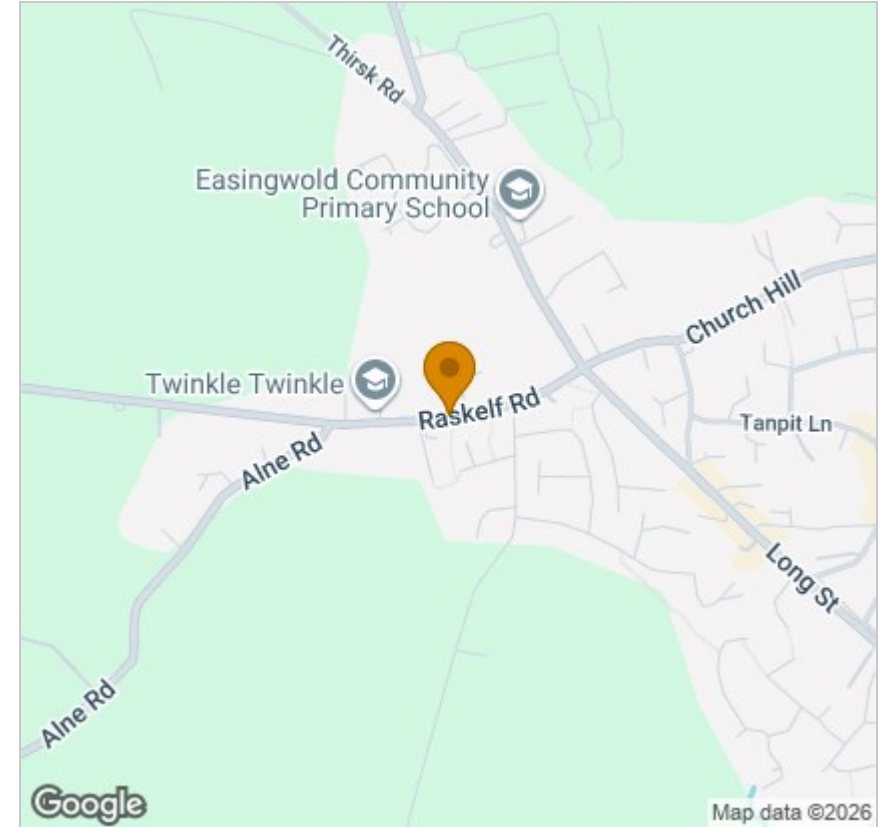
Viewing

Please contact our Emsley Mavor Estate Agents Office on 01347823579 if you wish to arrange a viewing appointment for this property or require further information.

These particulars, whilst believed to be accurate are set out as a general outline only for guidance and do not constitute any part of an offer or contract. Intending purchasers should not rely on them as statements of representation of fact, but must satisfy themselves by inspection or otherwise as to their accuracy. No person in this firm's employment has the authority to make or give any representation or warranty in respect of the property.

1 Tollbooth Building Market Place, Easingwold, North Yorkshire, YO61 3AB
 Tel: 01347823579 Email: info@emsleymavor.co.uk <http://emsleymavor.co.uk>

Area Map



Energy Efficiency Graph

