

shepherds

A better home  
moving experience



6 Pilgrims Row

Westmill, SG9 9LQ

Price Guide £460,000



## 6 Pilgrims Row

Westmill, SG9 9LQ

SOLD BY SHEPHERDS - Charming Grade II Listed Cottage in the Heart of Westmill - Dating From the Early 18th Century

Set within the highly regarded and picturesque village of Westmill, just a short stroll from the popular Sword Inn Hand public house, this charming Grade II Listed period cottage offers beautifully presented accommodation filled with character features and a warm, welcoming atmosphere.

The property forms part of an attractive terrace of traditional cottages and boasts a classic frontage beneath a clay tiled roof. Internally, the home showcases an abundance of original charm including exposed timbers, feature fireplaces and a wood-burning stove, creating a cosy living space ideal for all seasons.

The ground floor provides a delightful sitting room, rich in character and centred around an impressive brick fireplace, while to the rear is a superb open-plan kitchen/dining room, flooded with natural light via skylights and offering excellent space for entertaining. The kitchen is well fitted with ample worktops and a central island, and there is also the added benefit of a ground floor cloakroom.

Upstairs, the cottage offers two bedrooms and a well-appointed family bathroom, featuring a stunning freestanding roll-top bath and separate shower, perfectly combining period charm with modern comfort.

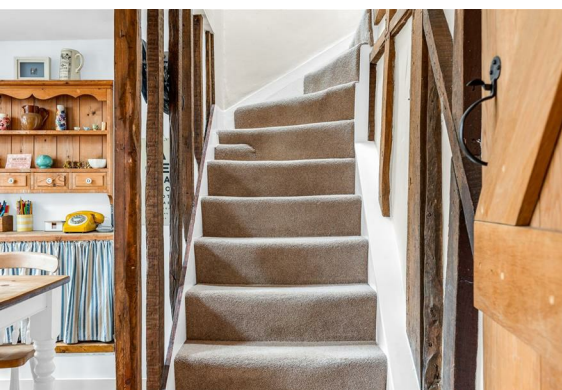
To the rear, the cottage enjoys a private and enclosed garden with a paved pathway, established planting, raised beds and access to a useful outbuilding/storage area – ideal for bikes, tools or hobby space.

A rare opportunity to purchase a beautifully maintained Grade II Listed village home in one of Hertfordshire's most sought-after locations, offering character, comfort and an enviable lifestyle.

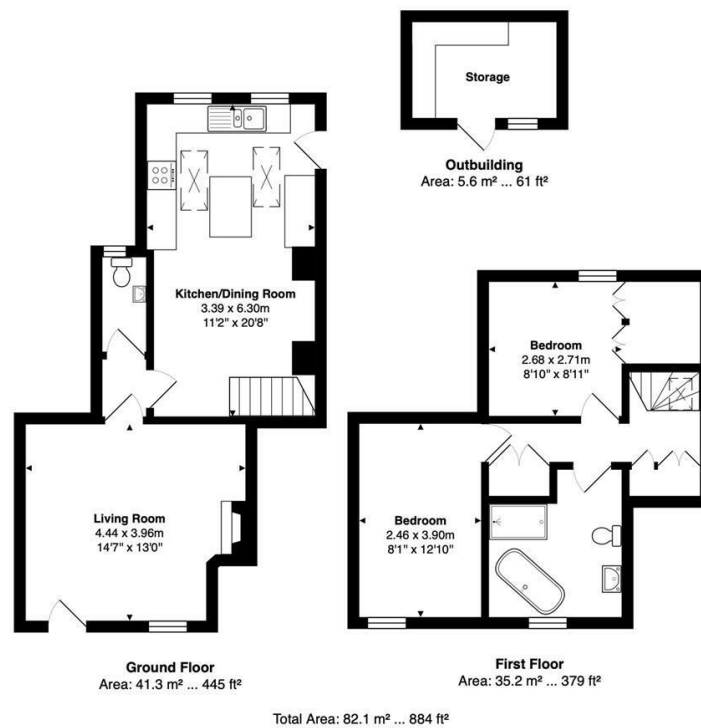




- Charming Grade II Listed period cottage
- Located in the sought-after village of Westmill, Hertfordshire
- Just a short walk to the popular Sword Inn Hand public house
- Wealth of character features including exposed beams and timbers
- Cosy sitting room with impressive fireplace and wood-burning stove
- Light-filled open-plan kitchen/dining room with skylights and island
- Two bedrooms and stylish bathroom with freestanding roll-top bath and separate shower
- Enclosed rear garden with raised beds and useful outbuilding/storage



## Floor Plan



FOR ILLUSTRATIVE PURPOSES ONLY; NOT TO SCALE  
Whilst every attempt has been made to ensure the accuracy of the floor plan shown, all measurements, positioning, fixtures, features, fittings and any other data shown are an approximate interpretation for illustrative purposes only and are not to scale. No responsibility is taken for any error, omission, miss-statement or use of data shown.  
Property marketing provided by [www.matthewkyle.co.uk](http://www.matthewkyle.co.uk)

## Viewing

Please contact Shepherds of Hertford on 01992 551955 if you wish to arrange a viewing appointment for this property or require further information.

## Energy Performance Graph



These particulars, whilst believed to be accurate are set out as a general outline only for guidance and do not constitute any part of an offer or contract. Intending purchasers should not rely on them as statements of representation of fact, but must satisfy themselves by inspection or otherwise as to their accuracy. No person in this firm's employment has the authority to make or give any representation or warranty in respect of the property.

Riverside House, 6 Millbridge, Hertford, SG14 1PY  
Tel: 01992 551955 Email: [enquiries@shepherdsfhertford.co.uk](mailto:enquiries@shepherdsfhertford.co.uk)