
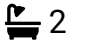



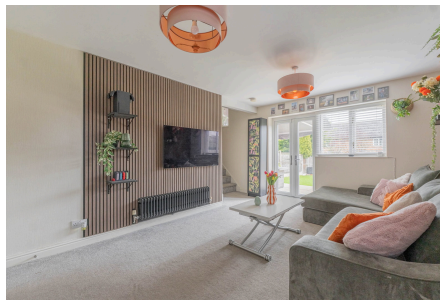


HOMES BY VICTORIA  
ESTATE AGENCY

## Haydon Close, Studley, B80 7SP

Offers In Region Of £300,000

 2  2  1



Welcome to Hayden Close, nestled in the heart of the ever-popular village of Studley. Set back from Alcester Road and approached via a private driveway, this charming and unique two-bedroom detached home enjoys a wonderfully quiet and secluded position, complemented by an attractive rear garden

[homesbyvictoria.co.uk](https://www.homesbyvictoria.co.uk)

[victoria@homesbyvictoria](mailto:victoria@homesbyvictoria) | 07833 136521

FOR M HOMES MIDLANDS LIMITED trading as Homes By Victoria Company Number: 13688840 VAT no: 470190115



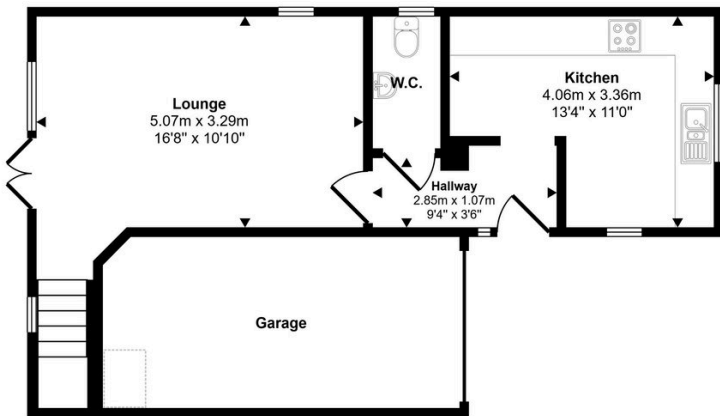
HOMES BY VICTORIA  
ESTATE AGENCY



## Key Features

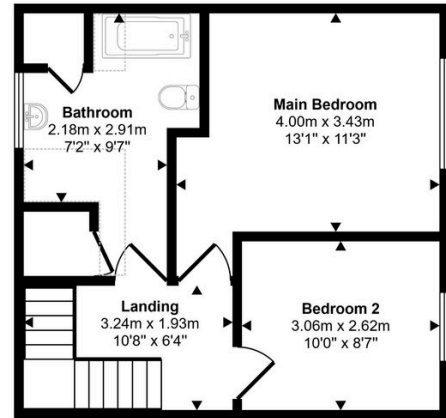
- LOCATED IN THE POPULAR VILLAGE OF STUDLEY
- SINGLE GARAGE AND DRIVEWAY
- LOUNGE DINER
- TWO DOUBLE BEDROOMS
- DELIGHTFUL REAR GARDEN
- UNIQUE TWO BEDROOM DETACHED HOME
- BREAKFAST KITCHEN
- DOWNSTAIRS WC
- MODERN FAMILY BATHROOM
- DOUBLE GLAZING & GAS CENTRAL HEATING

Approx Gross Internal Area  
93 sq m / 996 sq ft



Ground Floor  
Approx 53 sq m / 570 sq ft

Denotes head height below 1.5m



First Floor  
Approx 40 sq m / 426 sq ft

This floorplan is only for illustrative purposes and is not to scale. Measurements of rooms, doors, windows, and any items are approximate and no responsibility is taken for any error, omission or mis-statement. Icons of items such as bathroom suites are representations only and may not look like the real items. Made with Made Snappy 360.