



## DOCK STREET, E1

**£2,600 pcm**

Have a look at this furnished 1 bedroom property in a superb E1 location, Luxe Tower

- Available 11th June
- 1 Bedroom 1 Bathroom  
Furnished
- Residents Roof Terrace
- On Site Residents Gym & Sauna  
Tower Gateway

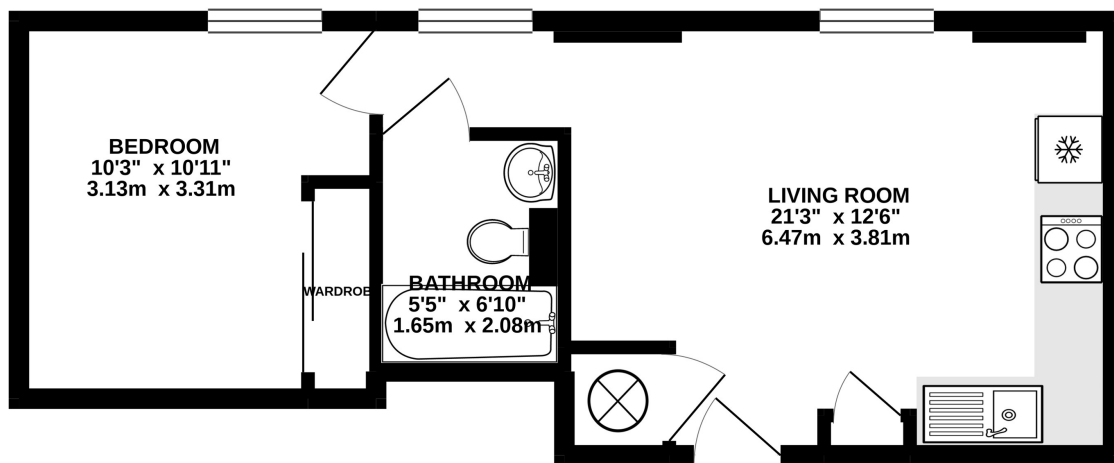


## ABOUT THE HOME

Have a look at this furnished 1 bedroom property in a superb E1 location, Luxe Tower. The property is offered Fully Furnished with a Professionally Supplied Furniture package. Just turn the key in your door and move in and enjoy the lifestyle that this superb location has to offer you. With a 5 Minute Walk you will find the hidden gem that is St Katharine's Dock







TOTAL FLOOR AREA : 360 sq.ft. (33.4 sq.m.) approx.

Whilst every attempt has been made to ensure the accuracy of the floorplan contained here, measurements of doors, windows, rooms and any other items are approximate and no responsibility is taken for any error, omission or mis-statement. This plan is for illustrative purposes only and should be used as such by any prospective purchaser. The services, systems and appliances shown have not been tested and no guarantee as to their operability or efficiency can be given.  
Made with Metropix ©2021



**LiFE RESIDENTIAL**

71 Drayton Park, London, N5

1BF

Sales: 020 3838 8666

Lettings: 020 7359 4488

Energy Rating: B. We aim to make our particulars both accurate and reliable. However they are not guaranteed; nor do they form part of an offer or contract. If you require clarification on any points then please contact us, especially if you're traveling some distance to view. Please note that appliances and heating systems have not been tested and therefore no warranties can be given as to their good working order.