



43 City view Netherfield Road South , Liverpool, L5 4LS £64,500

One Bedroom Apartment Near Royal Liverpool Hospital & Universities with one allocated parking space.

Ideally located within close proximity to the Royal Liverpool Hospital and Universities, this well presented one bedroom apartment offers a fantastic opportunity for first time buyers or investors. Local amenities are right on your doorstep, including nearby parks, supermarkets and a gym and a short walk into Liverpool City Centre. Excellent road links and Liverpool Lime Street Station, less than a mile away, make commuting a breeze.

Set within a popular development, the apartment benefits from access to a communal roof terrace, perfect for relaxing or socialising with city views.

Inside, the property features a hallway leading to a bright open plan living and kitchen area with large windows that flood the space with natural light. There is one generous double bedroom and a practical bathroom and gated, allocated parking for added convenience.

The apartment is currently tenanted on a fixed term contract until August, achieving £600pcm.

Leasehold
125 year lease from 2005
Service charge approximately £2377 per annum
Ground rent £150 per annum

Viewing

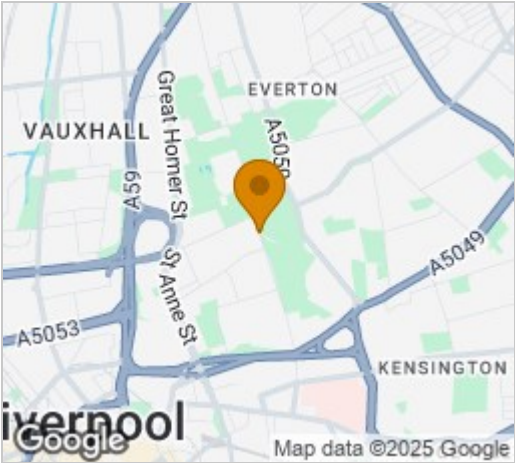
Please contact our Michael Moon Office on 0151 924 1000 if you wish to arrange a viewing appointment for this property or require further information.



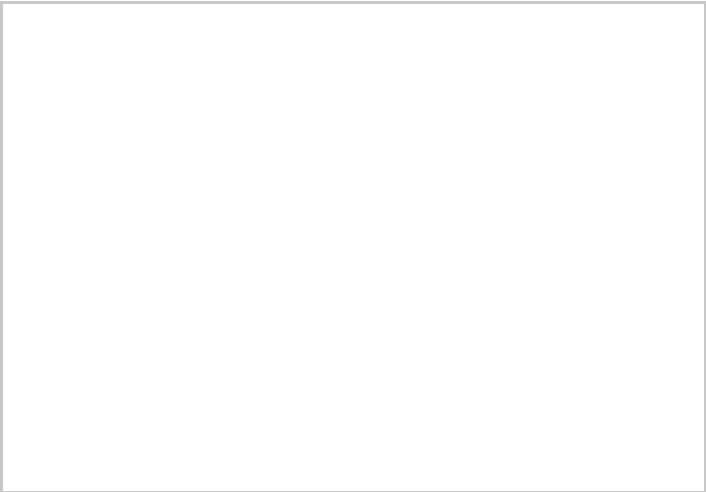
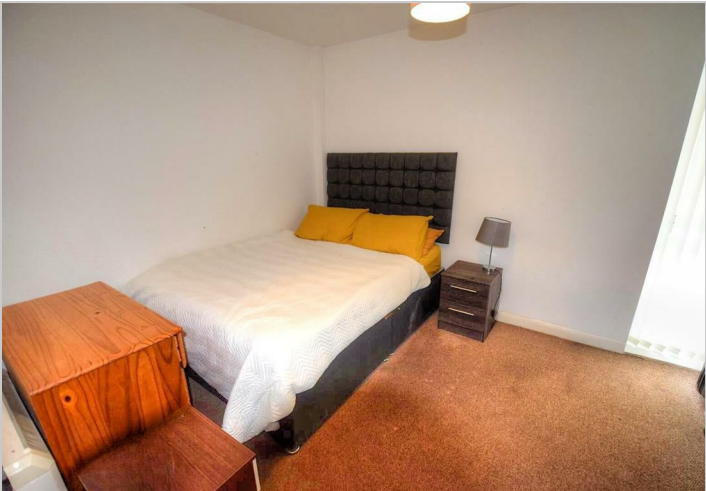
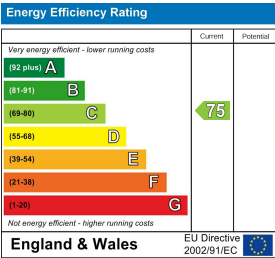
Floor Plan



Area Map



Energy Efficiency Graph



These particulars, whilst believed to be accurate are set out as a general outline only for guidance and do not constitute any part of an offer or contract. Intending purchasers should not rely on them as statements of representation of fact, but must satisfy themselves by inspection or otherwise as to their accuracy. No person in this firms employment has the authority to make or give any representation or warranty in respect of the property.