



Delph Gate Scarth Hill Lane, Lathom

Ormskirk

Offers Over £650,000

Delph Gate Scarth Hill Lane

Lathom, Ormskirk

Spacious ten-bedroom detached home (2,684 sq ft) with pool house, countryside views, mature gardens, and parking. Ideal for families or investors. Currently let and generating rental income.

Council Tax band: D

Tenure: Freehold

EPC Energy Efficiency Rating: D

EPC Environmental Impact Rating: D

- Substantial detached residence currently let for rental income
- Pool house complete with indoor swim spa
- Scenic countryside views
- Would make a fantastic family home
- Total accommodation measuring approximately 2,684 sq. ft.
- Mature private gardens
- Garage and driveway for ample cars
- Ten bedrooms
- Shower Room, Bathroom and Two En-Suites



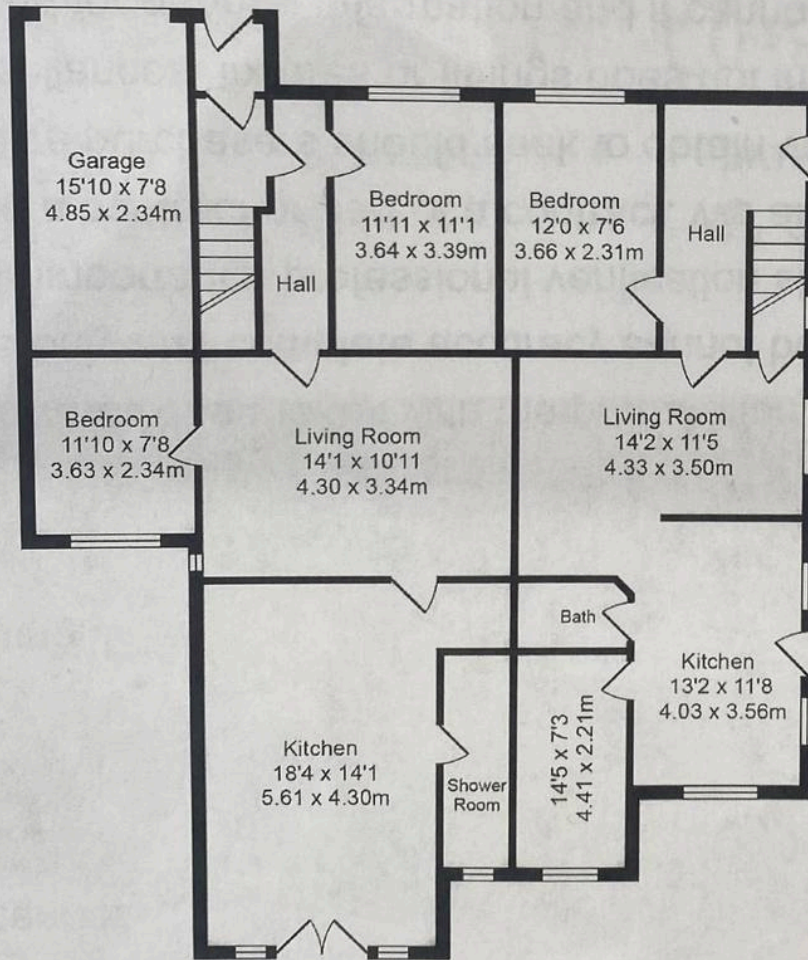


Floorplans

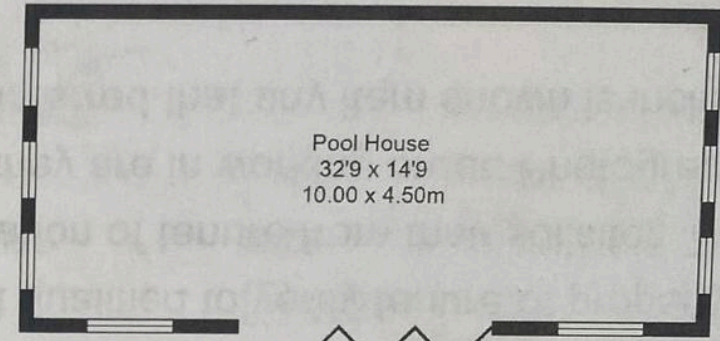
Neston, Scarth Hill

Total Approx. Floor Area 2684 Sq.ft. (249.4 Sq.M.)

Whilst every effort is made to accurately reproduce these floor plans, measurements are approximate, not to scale and for illustrative purposes only

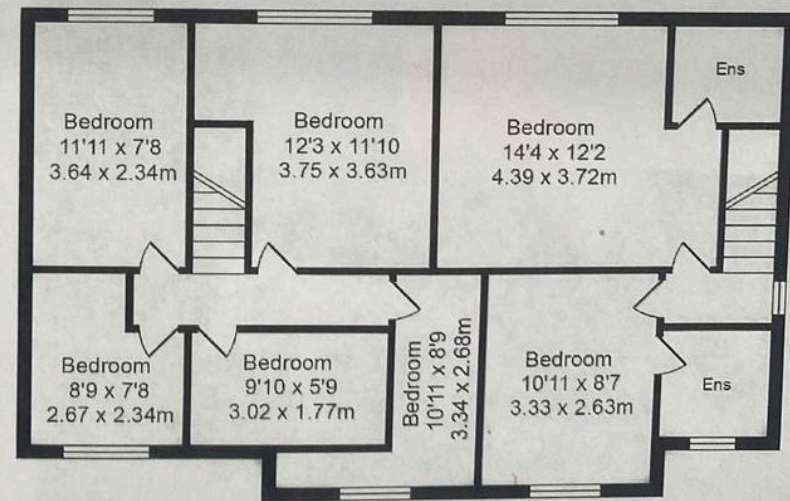


Ground Floor
Approx. Floor Area 1355 Sq.Ft (125.9 Sq.M.)



Pool House
32'9 x 14'9
10.00 x 4.50m

Pool House
Approx. Floor Area 484 Sq.Ft (45.0 Sq.M.)



First Floor
Approx. Floor Area 845 Sq.Ft (78.5 Sq.M.)



IAN ANTHONY

5 Burscough Street, Ormskirk - L39 2EG

01695580888

enquiries@iananthonyestates.co.uk

iananthonyestates.co.uk/

