



£795 PW

[£3445.00 PCM]

[FEES APPLY]

3 BEDROOM(S)

AVAILABLE: 2ND JULY 2021

Unfurnished for long term rental as sole agents, a 3-bedroom apartment set on the fifth floor in the iconic development of 20 Abbey Road only metres away from the world's most famous pedestrian crossing. EPC: B

- Iconic development
- 5th floor apartment
- Approx 1225 sq ft (114 sq m)
- 20' spacious reception
- Modern fitted kitchen
- 2 x double bedrooms
- 1 x single bedroom
- 2 x bathroom/WC's
- Underground parking space
- 24-hour concierge & pool

T: 020 7691 9000

E: info@excel-property.co.uk

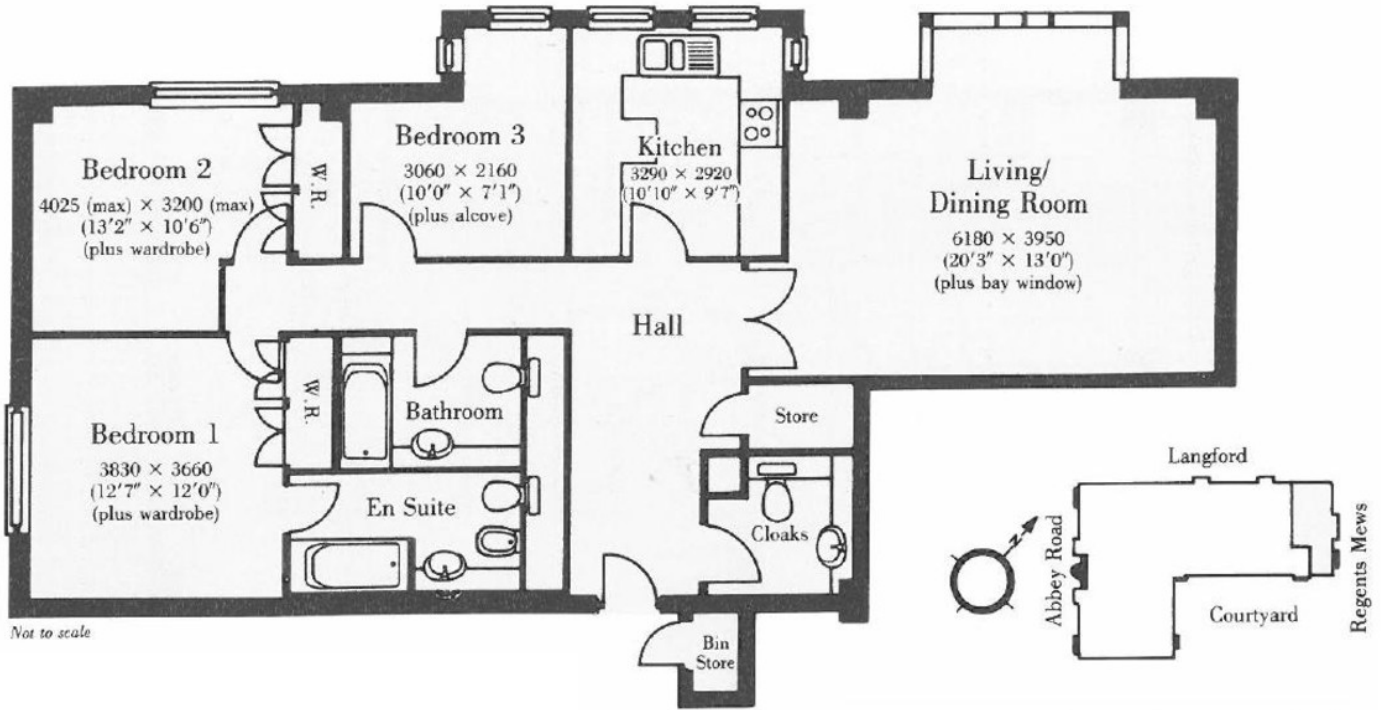
W: www.excel-property.co.uk

JP: www.excel-property.london/JP

A: 146 Finchley Road, London, NW3 5HS



20 ABBEY ROAD, ST JOHNS WOOD, LONDON NW8 9BJ



113.85 Sq. M. (1225 Sq. Ft.)

T: 020 7691 9000

E: info@excel-property.co.uk

W: www.excel-property.co.uk

JP: www.excel-property.london/JP

A: 146 Finchley Road, London, NW3 5HS

