



# 6 Ashland Drive

, Coalville, LE67 3NH

## Price Guide £260,000

\* GUIDE PRICE - £260,000-£270,000 \*

Situated on the ever-popular Ashland Drive, within the highly sought-after The Limes development in Ravenstone, this beautifully presented two-bedroom semi-detached bungalow has been thoughtfully updated by the current owners and is ready to move straight into. Having undergone a comprehensive programme of improvements throughout, including a brand new fitted kitchen with integrated appliances, new windows, a new boiler, new flooring, an electric vehicle charging point and a range of further upgrades, this is a home that offers modern living with very little left to do.

Step inside via the welcoming entrance hall, which leads through to a spacious and naturally bright lounge - the perfect place to relax or entertain family and friends. The heart of the home is undoubtedly the recently refitted contemporary kitchen, complete with stylish cabinetry, generous worktop space, a breakfast bar and a range of integrated appliances, including an oven, hob and dishwasher, with space for a freestanding fridge freezer. From here, doors open into the conservatory, creating an additional reception area overlooking the rear garden and providing direct access outside.

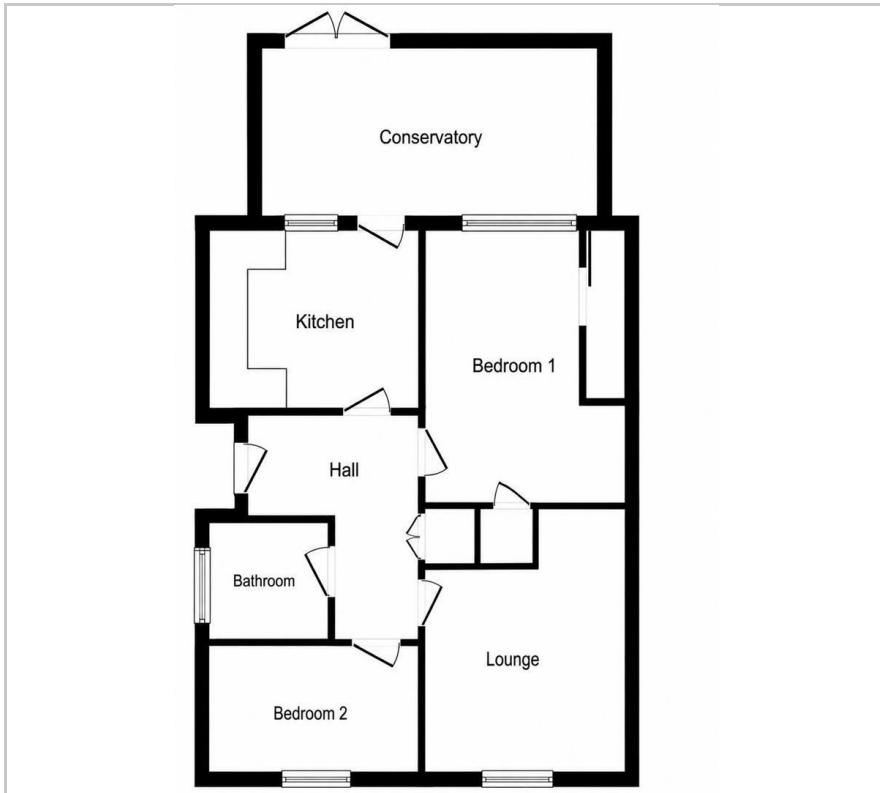
### Viewing

Please contact our Berkley Leicester Office on 0116 2544755 if you wish to arrange a viewing appointment for this property or require further information.

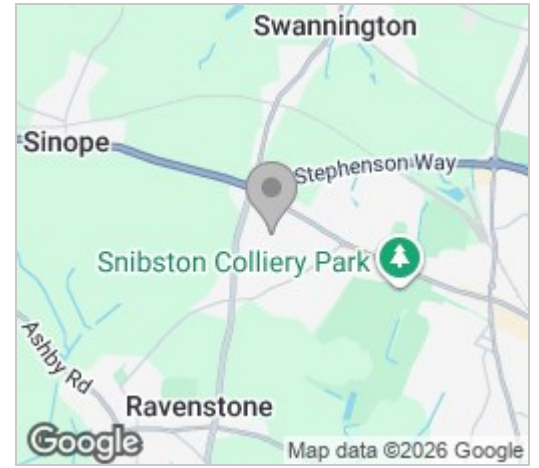


2
 1
 1

## Floor Plan



## Area Map



## Energy Efficiency Graph



These particulars, whilst believed to be accurate are set out as a general outline only for guidance and do not constitute any part of an offer or contract. Intending purchasers should not rely on them as statements of representation of fact, but must satisfy themselves by inspection or otherwise as to their accuracy. No person in this firm's employment has the authority to make or give any representation or warranty in respect of the property.