



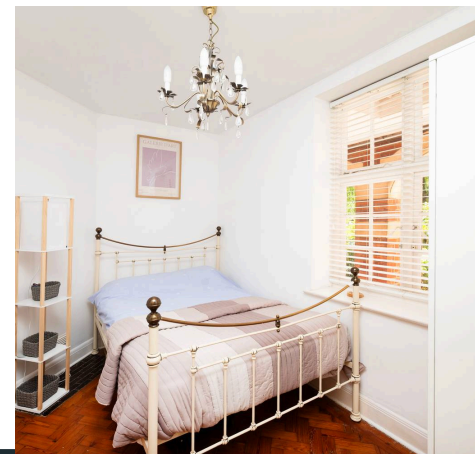
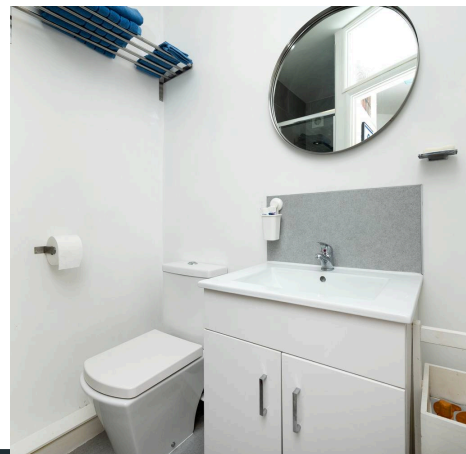
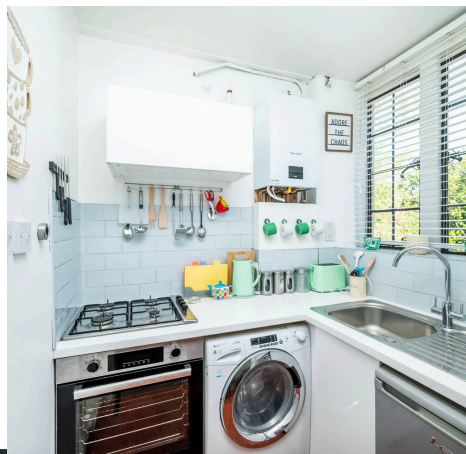
Pearl & Chance

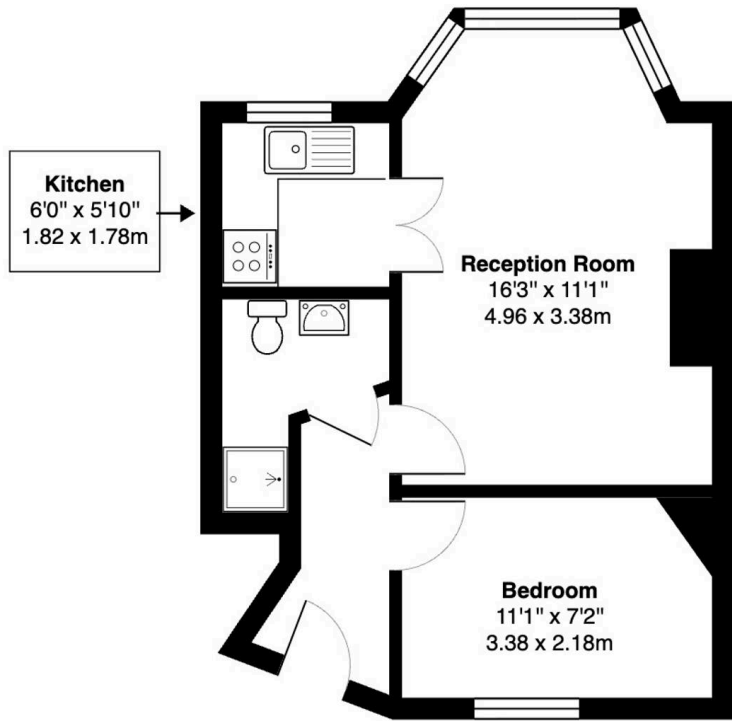
Meadway Court, Hampstead Garden Suburb, NW11
£375,000

Meadway Court, Hampstead Garden Suburb, NW11

This well-presented, chain-free one-bedroom ground-floor flat is set within Meadway Court, a highly regarded Grade II listed development on the south side of Hampstead Garden Suburb. The flat offers a bright and well-arranged layout, with a bay-fronted reception room that brings in excellent natural light and provides space for both living and dining. A separate kitchen sits just off the reception, fitted with good storage and worktop space, while the shower room is finished in a clean, modern style. Meadway Court is known for its attractive architecture, beautiful and well-maintained communal grounds, and on-site porter, making it one of the more desirable developments within the Suburb. Ideally located within walking distance of Golders Green Underground station, the shops and restaurants along Golders Green Road, and Temple Fortune, this is a strong option for first-time buyers or as a pied-à-terre.

- Chain Free
- Share of Freehold
- Council Tax Band: C
- One Bedroom
- Ground Floor
- Communal Gardens
- Porter / Caretaker
- Grade II Listed Building
- Close to Golders Green Tube Station





Ground Floor

Meadway Court, Meadway, NW11

Total Gross Area: 367 ft² ... 34.1 m²

All measurements are approximate and for identification guideline purposes only, not to scale.
Compliant with the RICS code of measuring practice

Energy Efficiency Rating		
	Current	Potential
<i>Very energy efficient - lower running costs</i>		
(92+) A		
(81-91) B		
(69-80) C		76
(55-68) D	64	
(39-54) E		
(21-38) F		
(1-20) G		
<i>Not energy efficient - higher running costs</i>		
England, Scotland & Wales	EU Directive 2002/91/EC	



Pearl & Chance

1 Hoop Lane, London - NW11 8JR

0208 059 5559

info@pearlandchance.co.uk

<http://pearlandchance.co.uk>



IMPORTANT: These sales particulars have been prepared as a general guide only. A detailed survey has not been carried out, nor the services, appliances and fittings tested. Room sizes should not be relied upon for furnishing purposes and are approximate. If floor plans are included, they are for guidance only and illustration purposes only and may not be to scale. If there are any important matters likely to affect your decision to buy, please contact us before viewing the property.