



4, Roe Cross Road, Mottram

£500,000 Freehold

Air Source Heat Pumps • Integrated Cooling System for hot weather • Close to Peak District and views • Off-Road Parking • German kitchen and German integrated appliances • Acoustic glazing throughout • Three Modern specification bathrooms with full Spanish tiles throughout • Four Double Bedrooms • Stylish Newly Built Townhouse • NO CHAIN

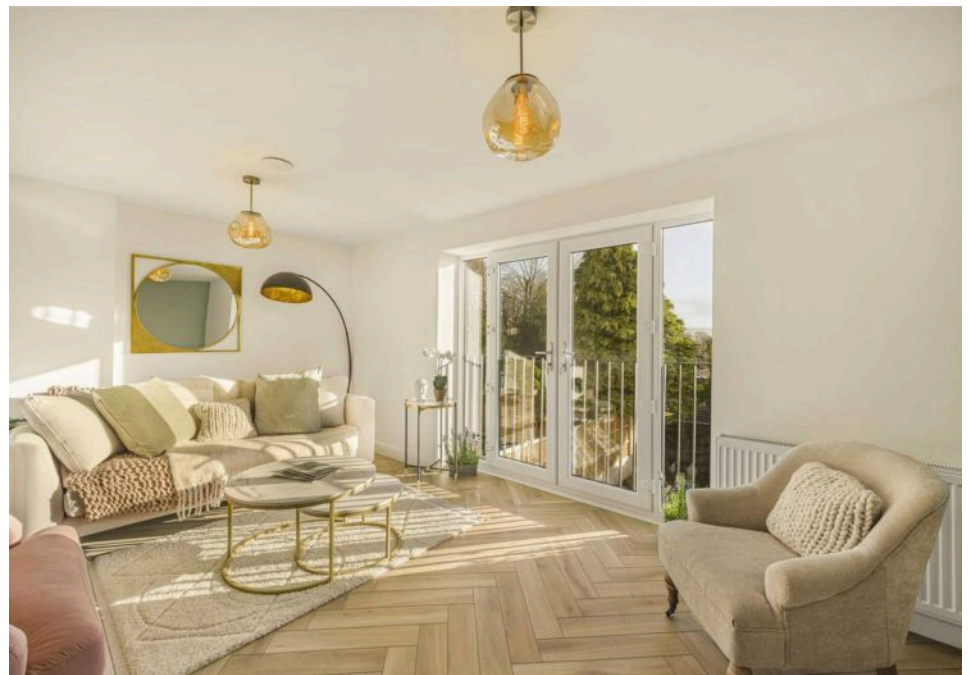
Stunning four bedroom new build townhouse in Mottram, Hyde. Modern design, spacious rooms, air source heat pump, near Peak District, Stalybridge station, and local bus stop.

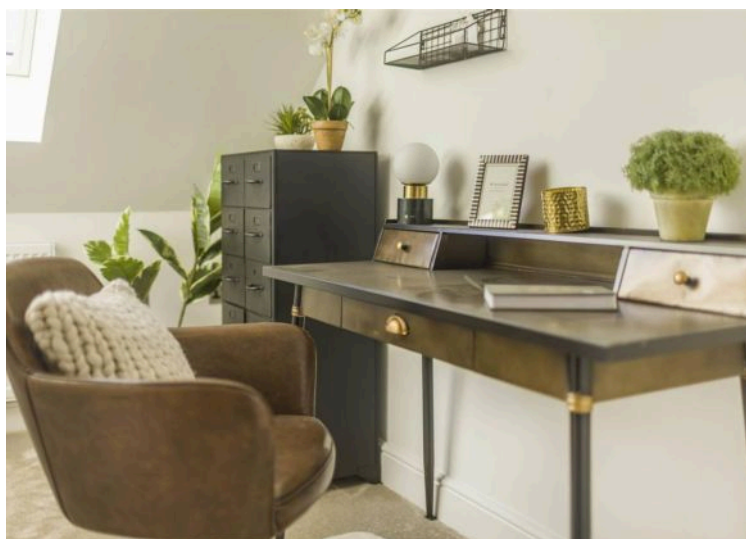
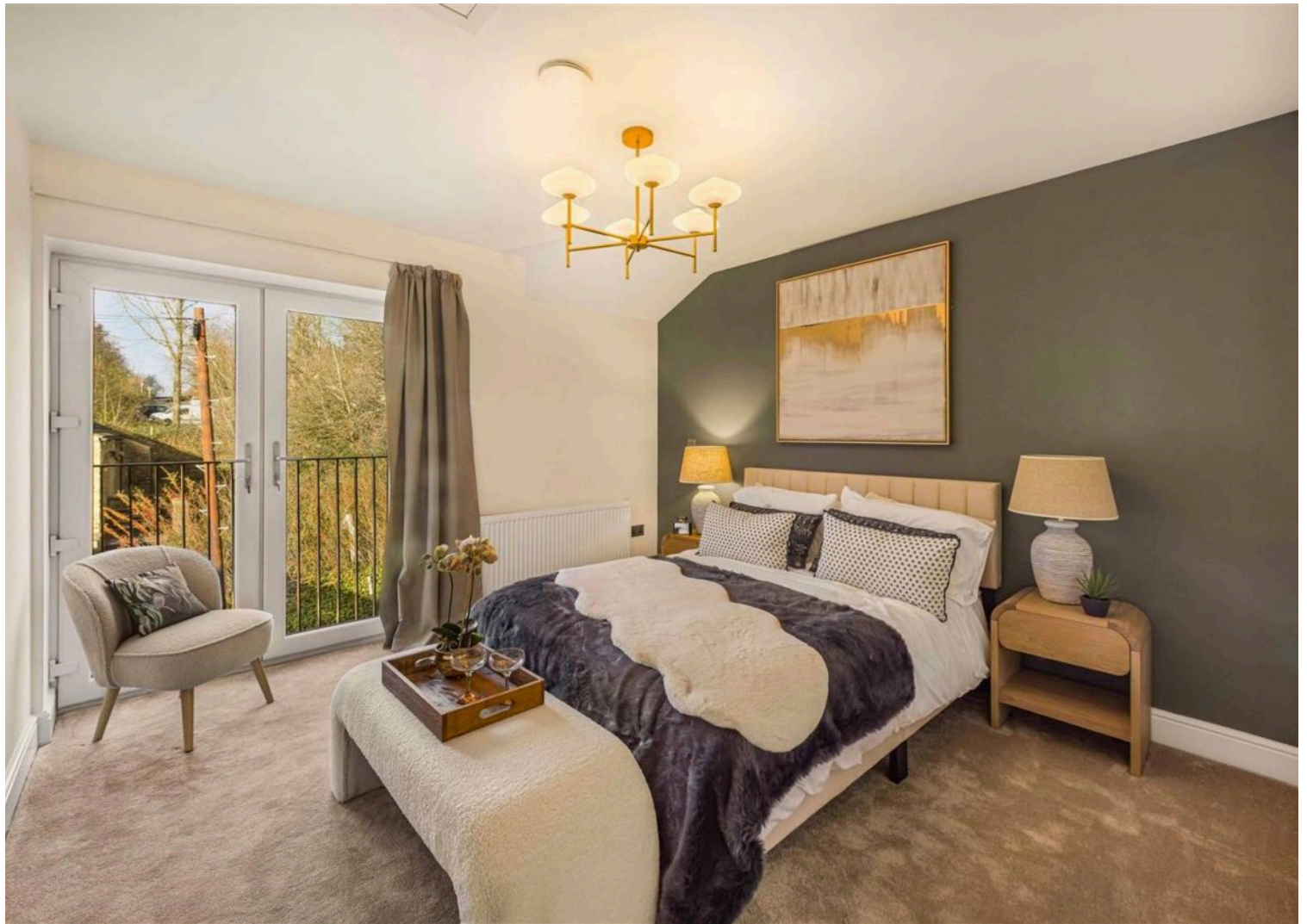
Council Tax band: TBD

Tenure: Freehold

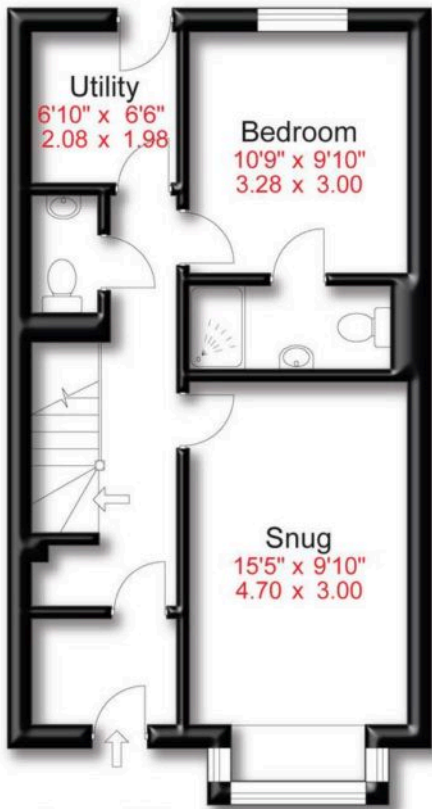


- Air Source Heat Pumps
- Integrated Cooling System for hot weather
- Close to Peak District and views
- Off-Road Parking
- German kitchen and German integrated appliances
- Acoustic glazing throughout
- Three Modern specification bathrooms with full Spanish tiles throughout
- Four Double Bedrooms
- Stylish Newly Built Townhouse
- NO CHAIN

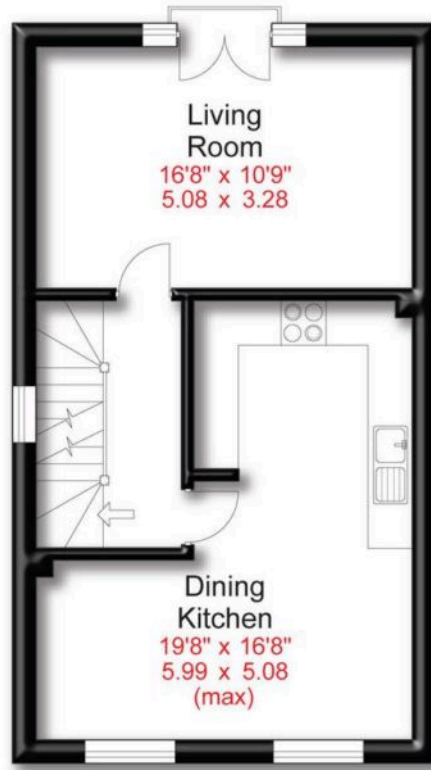




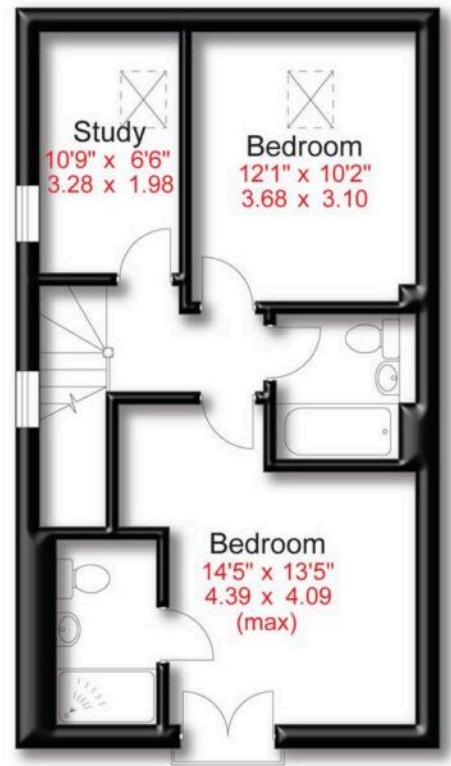
Approx Gross Floor Area = 1560 Sq. Feet



Ground Floor



First Floor



Second Floor

