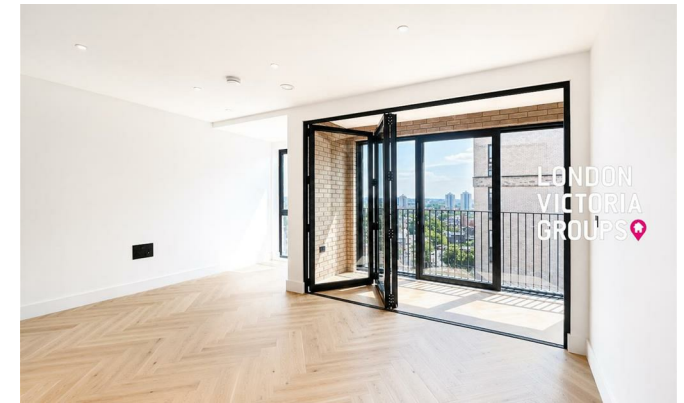


**LONDON
VICTORIA
GROUPS** 



Huntingdon Apartments, 1 Graphite Square

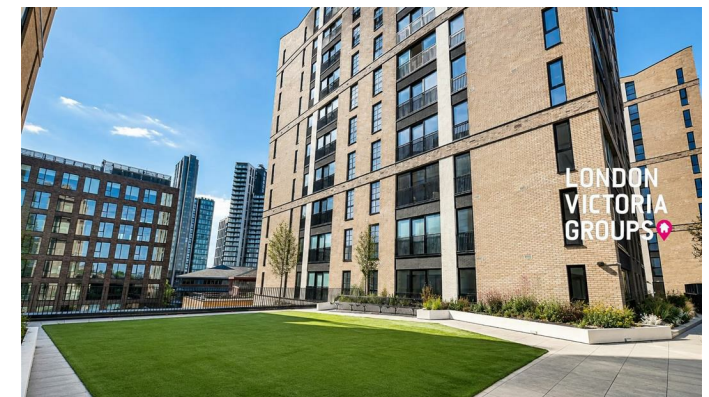
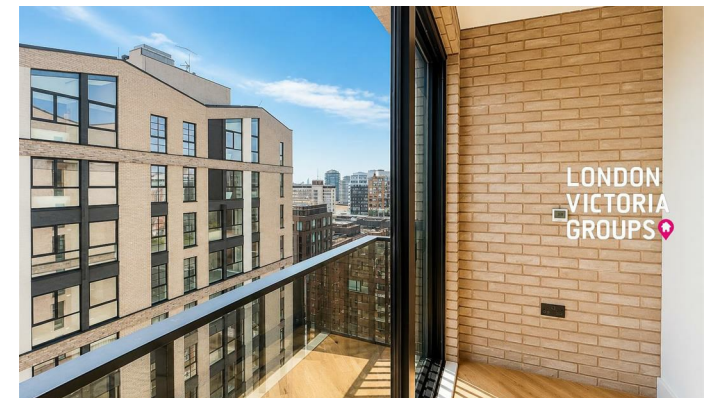
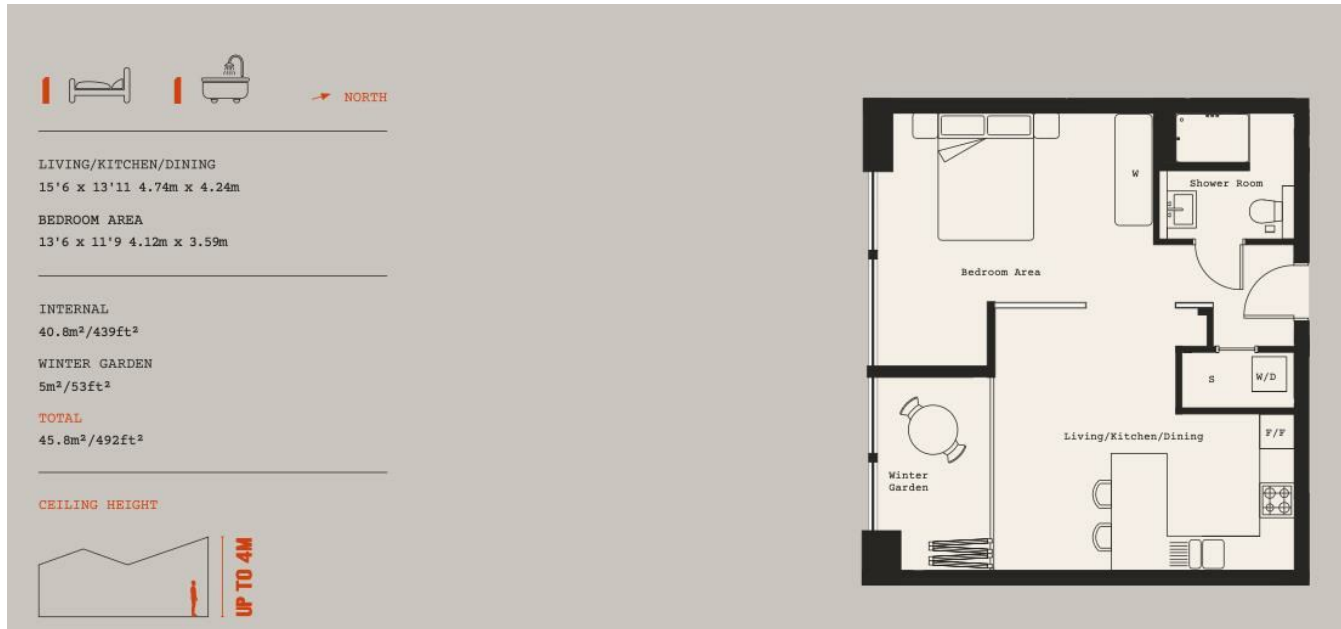
, LONDON SE11 5EE

- Vauxhall/Nine Elms Station
- Landscaped podium garden with seating areas and children's play space
- Secure entry system and lift access
- 24-hour concierge service
- Beautifully designed communal public spaces
- EPC-B

£2,800 Per Month



Local Authority
Council Tax Band **New Build**
EPC Rating **B**



London Office Office
Spaces Victoria, 25 Wilton Road, Pimlico,
London, SW1V 1LW

Contact
020 3084 3094
XL@londonvictoriagroups.co.uk
www.londonvictoriagroups.co.uk

Agents Note: Whilst every care has been taken to prepare these particulars, they are for guidance purposes only. All measurements are approximate and for general guidance purposes only and whilst every care has been taken to ensure accuracy, they should not be relied upon and potential buyers/tenants are advised to recheck the measurements.