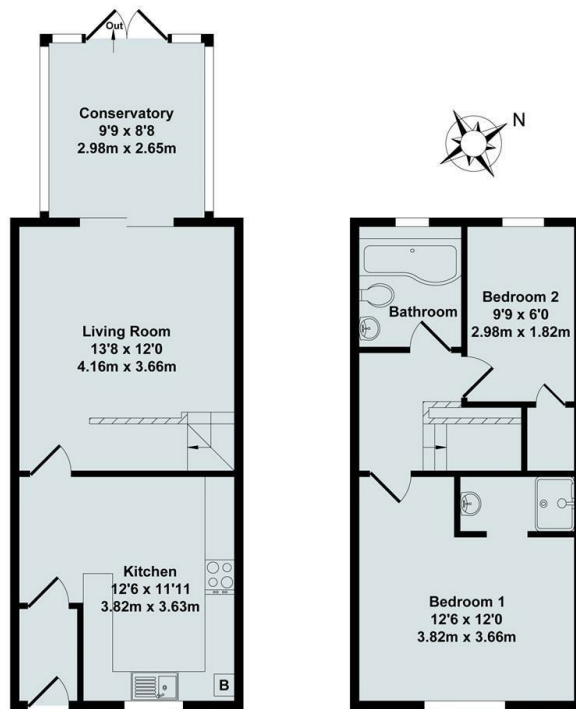




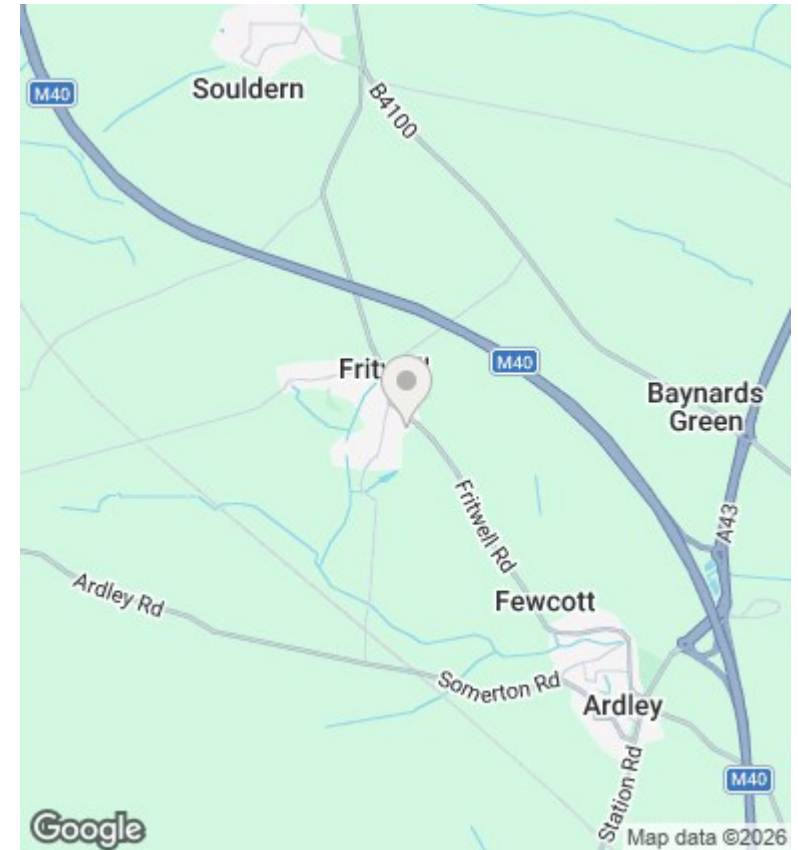
## 6 Hodgson Close, Fritwell, Bicester, OX27 7QB

£1,400 Per Month - 5th June 2026.

- Two bedroom end terrace house
- Kitchen appliances
- Off street parking for 1 car
- Calor gas from central tank to road, mains electricity and water
- Unfurnished
- Gas central heating
- EPC rating D
- Ensuite shower to master bedroom
- Rear Garden
- Council Tax Band C



Ground Floor First Floor  
 Total Approx. Floor Area 725 Sq.Ft. (67.40 Sq.M.)  
 All items illustrated on this plan are included in the "Total Approx Floor Area"



## Directions

## Viewings

Viewings by arrangement only. Call 01865 515900 to make an appointment.

## Council Tax Band

C

## EPC Rating:

D

Energy Efficiency Rating		Current	Potential
<i>Very energy efficient - lower running costs</i>			
(92 plus)	A		
(81-91)	B		83
(69-80)	C		
(55-68)	D	64	
(39-54)	E		
(21-38)	F		
(1-20)	G		
<i>Not energy efficient - higher running costs</i>			
<b>England &amp; Wales</b>		EU Directive 2002/91/EC	