



**Streatley Road, Kilburn, NW6**  
£1,800 pcm

## Streatley Road, Kilburn, NW6

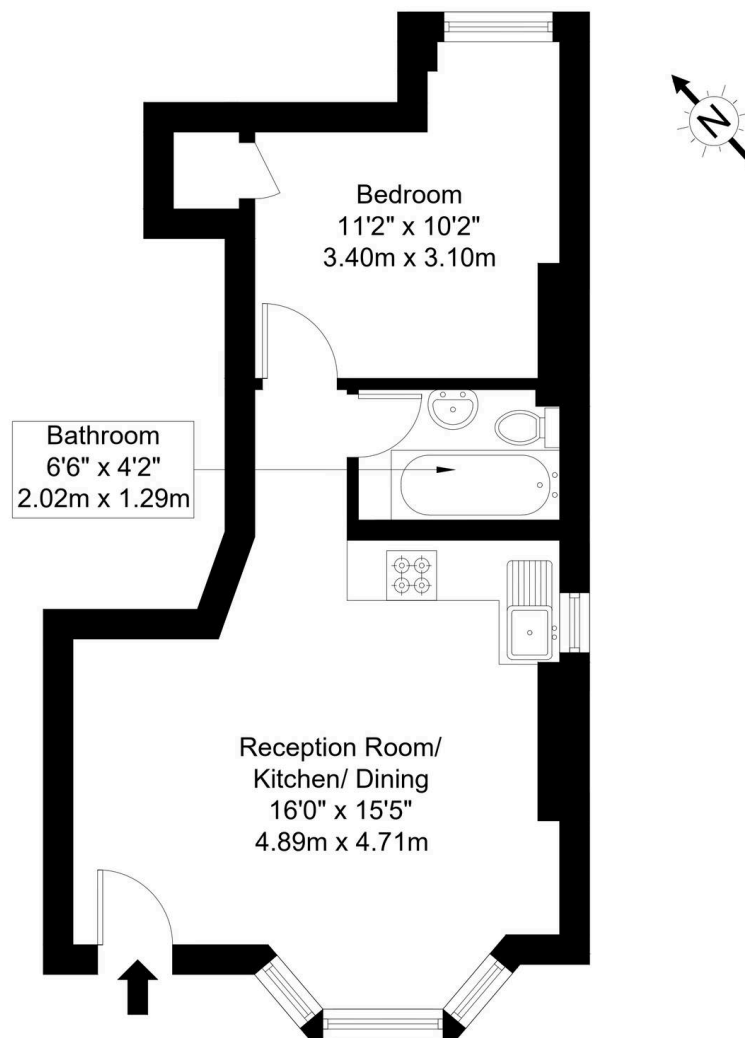
Available In July. This is a great one double bedroom flat in a Victorian house conversion on a quiet residential street in Kilburn (Jubilee Line). The property is neutrally decorated and offers open plan reception room with modern fully fitted kitchen, small patio, large double bedroom and tiled bathroom. The flat also benefits from wood floors and high ceilings throughout. The Tube and local amenities of Kilburn are a short walk away.





# Streatley Road, NW6 7LH

Approx Gross Internal Area = 33.7 sq m / 362 sq ft



Ground Floor

Ref :

Copyright **BLEU PLAN**

The Floor plan is not to scale and measurements and areas shown are approximate and therefore should be used for illustrative purposes only. The plan has been prepared in accordance with the RICS code of Measuring Practice and whilst we have confidence in the information produced it must not be relied on. Maximum lengths and widths are represented on the floor plan. If there is any aspect of particular importance, you should carry out or commission your own inspection of the property.

Copyright @ BleuPlan



## Black Katz

22 West Hampstead Mews, London - NW6 3BB

02073285000 • [Thomas@blackkatz.com](mailto:Thomas@blackkatz.com) • [blackkatz.com/](http://blackkatz.com/)