



CLIVEPEARCE
Now you're moving

2 Bedrooms

Park home

Asking Price

£150,000

Located in

Truro



www.clivepearceproperty.com



Truro Heights

Truro | | TR1 3FB



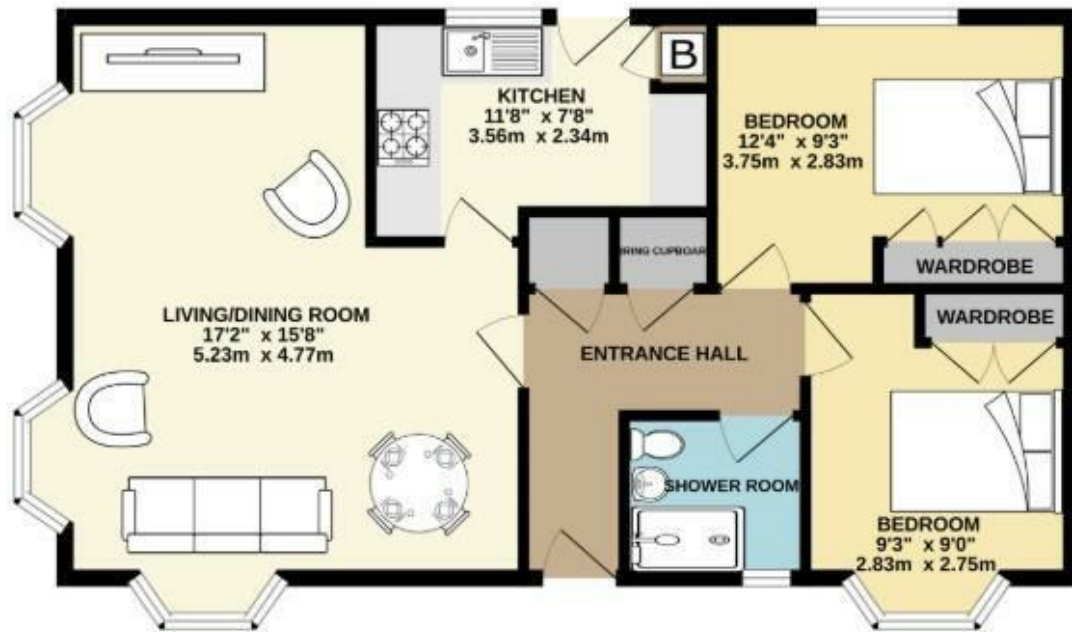
A spacious and well presented park home set within the popular Truro Heights development.

Truro Heights

£150,000 Freehold



- Beautifully presented detached Park Home
- Open Plan Living/Dining Room
- Two Double Bedrooms
- Gas central heating (Flo Gas)
- Cash buyers only
- No Onward Chain
- Modern Kitchen with integrated Appliances
- Shower Room suite
- Off Road Parking for Two Vehicles
- Residents must be aged 45 years or over



Whilst every effort has been made to ensure the accuracy of the description contained here, measurements of doors, windows, rooms and any other items are approximate and no responsibility is taken for any error, omission or misstatement. This plan is for illustrative purposes only and should be used as such by any prospective purchaser. The services, systems and appliances shown have not been tested and no guarantee as to their operability or efficiency can be given.
Made with Metaplan 02025

Council Tax Band A

Local Authority

Agents Note: Whilst every care has been taken to prepare these particulars, they are for guidance purposes only. All measurements are approximate and are for general guidance purposes only and whilst every care has been taken to ensure their accuracy, they should not be relied upon and potential buyers/tenants are advised to recheck the measurements.

31 Lemon Street
Truro
Cornwall
TR1 2LS



CLIVEPEARCE
Now you're moving

hello@clivepearceproperty.com

01872 272622

www.clivepearceproperty.com