



Shaw Close

Kingsthorpe, Northampton

oriordanbond
SALES & LETTINGS



Shaw Close

Kingsthorpe
NN2 8FX

Offers Over
£315,000

An immaculate three bedroom detached family home, situated in this sought after area within Kingsthorpe, located close by to local schools, amenities and Kingsthorpe Recreation Ground.

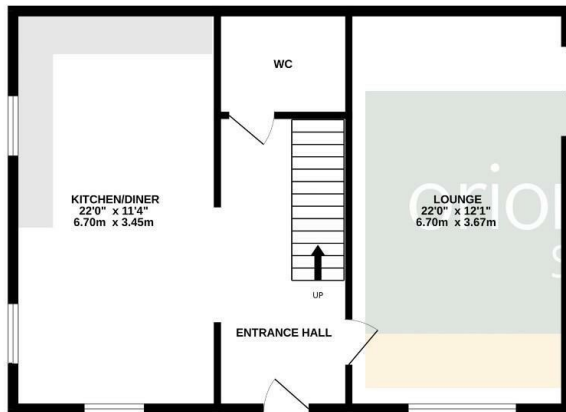
The accommodation comprises large entrance hall leading into the open plan kitchen/dining room, a cloakroom/WC and 22' long sitting room. From the first floor landing is a three-piece family bathroom and three generous size bedrooms with the master benefitting from an en-suite shower room. Outside is a private rear garden which is laid mainly to lawn and benefits from a patio area. There are lawned gardens to the front and side and a block paved driveway providing off road parking for two vehicles leading to a detached garage. Further benefits include uPVC double glazing, gas radiator heating and a newly installed Wren kitchen. (A/1356/M)

- Immaculate three bedroom detached home
- En-suite to master bedroom
- Nealy installed Wren kitchen/dining room
- Gas radiator heating
- Enclosed rear garden
- Driveway and detached garage

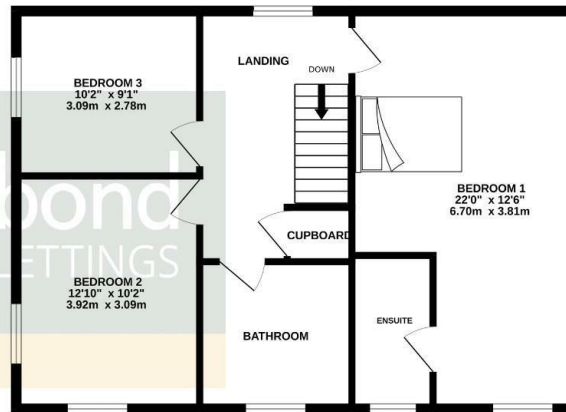




GROUND FLOOR
673 sq.ft. (62.5 sq.m.) approx.

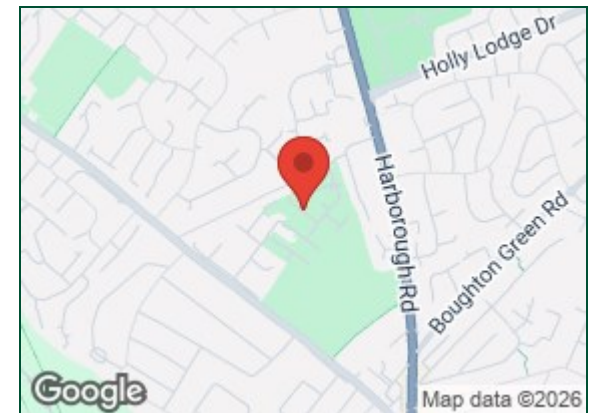


1ST FLOOR
683 sq.ft. (63.4 sq.m.) approx.



TOTAL FLOOR AREA : 1356 sq.ft. (125.9 sq.m.) approx.

Whilst every attempt has been made to ensure the accuracy of the floorplan contained here, measurements of doors, windows, rooms and any other items are approximate and no responsibility is taken for any error, omission or mis-statement. This plan is for illustrative purposes only and should be used as such by any prospective purchaser. The services, systems and appliances shown have not been tested and no guarantee as to their operability or efficiency can be given.
Made with Metropix ©2025



Additional information

- Council Tax Band: D
- Energy Efficiency Rating: B

Viewing

Viewing strictly by appointment – details below

Disclaimer

O'Riordan Bond Estate Agents Limited has not tested apparatus, equipment, fittings or services and so cannot verify they are in working order. The buyer is advised to obtain verification from their solicitor or surveyor.

O'Riordan Bond Kingsthorpe Sales

01604 722007

kingsthorpe@oriordanbond.co.uk

