



QUEENS COURT, W2

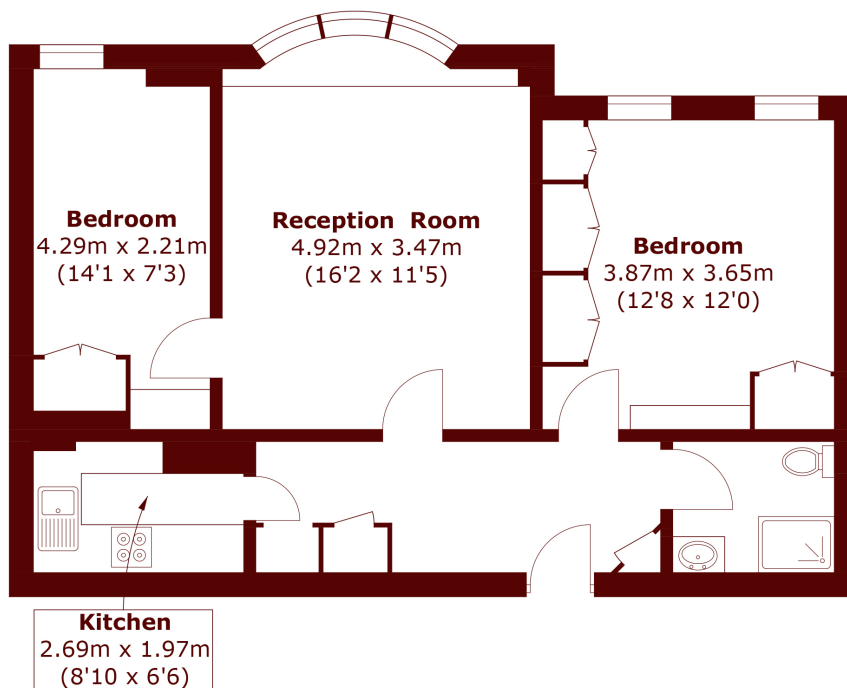
£750 Per week

A contemporary two-bedroom apartment on the second floor within this well-presented portered building.

Two Double Bedrooms
Spacious Living Room
Wooden Flooring

Portered Building
Second Floor with Lift Access
Moments from Hyde Park

STEP INSIDE QUEENS COURT



Total area (approx.): 60.7 sq. m (653.3 sq. ft)

Notting Hill
020 7313 2890

Energy Rating: C We aim to make our particulars both accurate and reliable. However, they are not guaranteed; nor do they form part of an offer or contract. If you require clarification on any points then please contact us, especially if you're traveling some distance to view. Please note that appliances and heating systems have not been tested and therefore no warranties can be given as to their good working order

**MARSH &
PARSONS**