



Aldreds
Estate Agents

13 Jury Street

Great Yarmouth, NR30 1ES

Offers Over £120,000



13 Jury Street

Great Yarmouth, NR30 1ES

Aldreds are pleased to offer this modernised and attractively presented mid terraced house offered with the benefit of off road parking. The property is ideally situated close to local amenities and would make an ideal first home or investment purchase. The accommodation comprises of a through living room, kitchen, lobby and wet room, small landing and three bedrooms. Outside is a small rear yard and forecourt parking. The property also benefits from double glazed windows and gas central heating. Offered chain free.

Living Room

18'8" x 12'1" (5.7 x 3.7)

Large through living room, part double glazed pvc entrance door, doubler glazed front and rear aspect windows, television point, radiator, stairs to first floor, door to:

Kitchen

12'1" x 5'6" (3.7 x 1.7)

Modern kitchen with wall and matching base units with work surfaces over, single drainer sink unit, space and plumbing for a washing machine, part tiled walls, wood panelled door to rear, electric cooker point, double glazed window to rear, door to:

Inner Lobby

Built in storage cupboard, wall mounted gas fired boiler, door to:

Wet Room

Waterproof floor membrane with floor drain and electric shower over, low level wc, pedestal wash basin, towel rail/radiator, part tiled walls, frosted double glazed window to rear aspect.

Bedroom 1

12'5" x 10'2" (3.8 x 3.1)

Double glazed window to front aspect, radiator.

Bedroom 2

9'10" x 8'6" (3 x 2.6)

Plus built in cupboard, radiator, double glazed window to rear aspect, door to:

Bedroom 3

11'5" x 5'6" (3.5 x 1.7)

Double glazed window to side aspect, radiator.





Outside

Private off street private parking space to the front of the house. To the rear is an enclosed yard area. Gate to pedestrian service passageway.

Tenure

Freehold

Services

Mains water, electric, gas and drainage.

Council Tax

Great Yarmouth Borough Council - Band 'A'

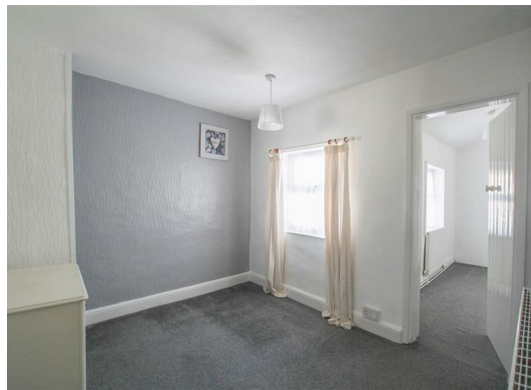
Location

Great Yarmouth is the largest resort on the East Norfolk coast with its Historic Market Place and varied selection of shops. The town has a busy port and the rivers Yare and Bure gives access to the Norfolk Broads. There are Museums * Race Course * Heliport * Beach * Schools for all ages * District Hospital approximately 5 miles South. Bus and rail services connect with Norwich.

Directions

From Haven Bridge proceed north along North Quay, at the roundabout take the right hand exit onto Fullers Hill, at the third set of traffic lights turn left into St Nicholas Road, continue past the Sainsbury's superstore and the petrol station, turn left into Factory Road, turn right into Jury Street where the property can be found on the left hand side.

REF: Y12594/01/26/CF



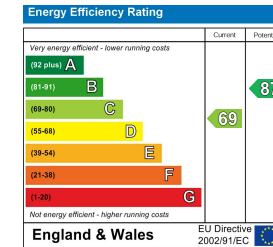
Floor Plan



Area Map



Energy Efficiency Graph



Viewing

Please contact our Aldreds Great Yarmouth Office on 01493 844891 if you wish to arrange a viewing appointment for this property or require further information.

Disclaimer

These particulars are issued on an understanding that all negotiations shall be conducted through Messrs. Aldreds. Please note: Messrs. Aldreds for themselves and for the vendors or lessors of this property whose agents they are given notice that: 1. Particulars are set out as a general outline only for guidance of intending purchasers or lessees, and do not constitute nor constitute part of, an offer or contract. 2. All descriptions, dimensions, references to condition and necessary permissions for use and occupation, and other details are given without responsibility and any intending purchasers or tenants should not rely on them as statements or representations of fact but must satisfy themselves by inspection or otherwise as to the correctness of each of them. 3. No person in the employment of Messrs. Aldreds has any authority to make or give any representation or warranty whatever in relation to this property. 4. If you are proposing to visit the property and are travelling some distance please check with Aldreds on the issue of availability prior to travelling. 5. Aldreds Property Consultants and associated services may offer additional services to the prospective purchaser for which they will be entitled to receive a commission.

Aldreds are pleased to be working with Mortgage Advice Bureau. They're an award-winning mortgage broker with over 1,400 advisers across the UK, and have access to over 12,000 mortgage products from over 90 lenders. Aldreds Estate Agents Ltd receive a commission of £200 on each completed case. Your home may be repossessed if you do not keep up repayments on your mortgage. There may be a fee for mortgage advice. The actual amount you pay will depend upon your circumstances. The fee is up to 1%, but a typical fee is 0.3% of the amount borrowed. Mortgage Advice Bureau is a trading name of Mortgage Seeker Limited which is an appointed representative of Mortgage Advice Bureau Limited and Mortgage Advice Bureau (Derby) Limited which are authorised and regulated by the Financial Conduct Authority. Mortgage Seeker Limited Registered Office: Lovewell Blake, Sixty Six North Quay, Great Yarmouth, Norfolk, NR30 1HE. Registered in England Number: 03721415. 6. Potential purchasers should check with their providers that the broadband and mobile phone coverage they would require is available.

17 Hall Quay, Great Yarmouth, Norfolk, NR30 1HJ

Tel: 01493 844891 Email: yarmouth@aldreds.co.uk <https://www.aldreds.co.uk/>

Registered in England Reg. No. 08945751 Registered Office: 17 Hall Quay, Great Yarmouth, Norfolk NR30 1HJ

Directors: Mark Duffield B.S.c. FRICS. Dan Crawley MNAEA Paul Lambert MNAEA