



9 Queens Road, Datchet, Slough, SL3 9BN
£890,000

 **HORLER**

9 Queens Road, Datchet, Slough, SL3 9BN

In the heart of Datchet, positioned within a charming cul-de-sac, this beautifully presented four-bedroom detached bungalow offers a superb blend of comfort and elegant living. Thoughtfully designed and impeccably maintained, the home provides spacious, light-filled interiors, including a delightful conservatory, creating an ideal space for relaxing while enjoying views of the garden.

Located just moments from the village high street and the scenic banks of the River Thames, the property is perfectly placed for those seeking both everyday convenience and a peaceful, picturesque setting. For leisure enthusiasts, the home is also just a short walk from Datchet Golf Club, further enhancing its appeal.

Combining tranquil surroundings with easy access to local amenities, this is a rare opportunity to enjoy village living at its finest.



Property Summary.

As you enter, you are greeted by three inviting reception rooms, including a formal sitting room that seamlessly connects to an open-plan kitchen and dining area. This layout is ideal for both entertaining guests and enjoying family time. The principal bedroom boasts the added luxury of an ensuite shower room, while the three additional well-proportioned bedrooms provide ample space for family or guests.

One of the standout features of this property is its stunning south-west facing walled garden, which offers a private oasis for relaxation and outdoor activities. The garden is adorned with mature flower beds and shrub borders, creating a picturesque setting. For those with a green thumb, a glasshouse is also included, perfect for nurturing your gardening passions.

Situated in a secluded position, this bungalow is just moments away from the tranquil banks of the River Thames, making it an ideal spot for leisurely walks. The village centre is a short stroll away, providing convenient access to local amenities. Additionally, the nearby train station offers direct services to Waterloo and a quick journey back into Windsor Town Centre.

This property is a rare find, combining a peaceful location with modern living, making it an excellent choice for families or those seeking a serene retreat. Don't miss the opportunity to make this delightful bungalow your new home.

Council Tax. Band F.

Legal note:

****Although these particulars are thought to be materially correct their accuracy cannot be guaranteed and they do not form part of any contract**.**





Queens Road SL3

Approximate Gross Internal Floor Area = 169.0 sq m / 1819 sq ft

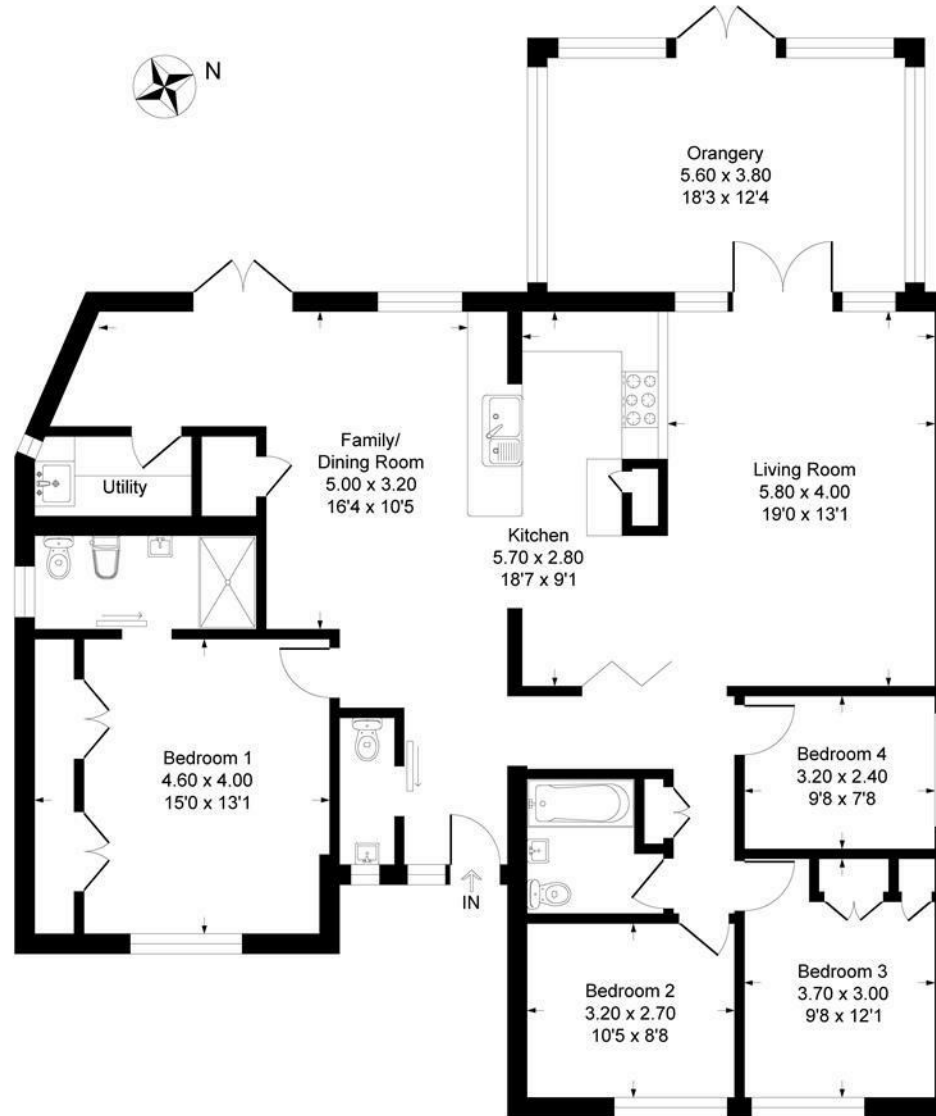


Illustration for identification purposes only, measurements are approximate, not to scale.
Produced By Esjay Property Marketing