



## Brunswick Centre, WC1N

£3,033 Per calendar month

A recently refurbished two bedroom property in one of Bloomsbury's most iconic buildings. The apartment has two double bedrooms, modern open plan kitchen/living room with a good sized balcony, wooden floors throughout and contemporary bathroom.

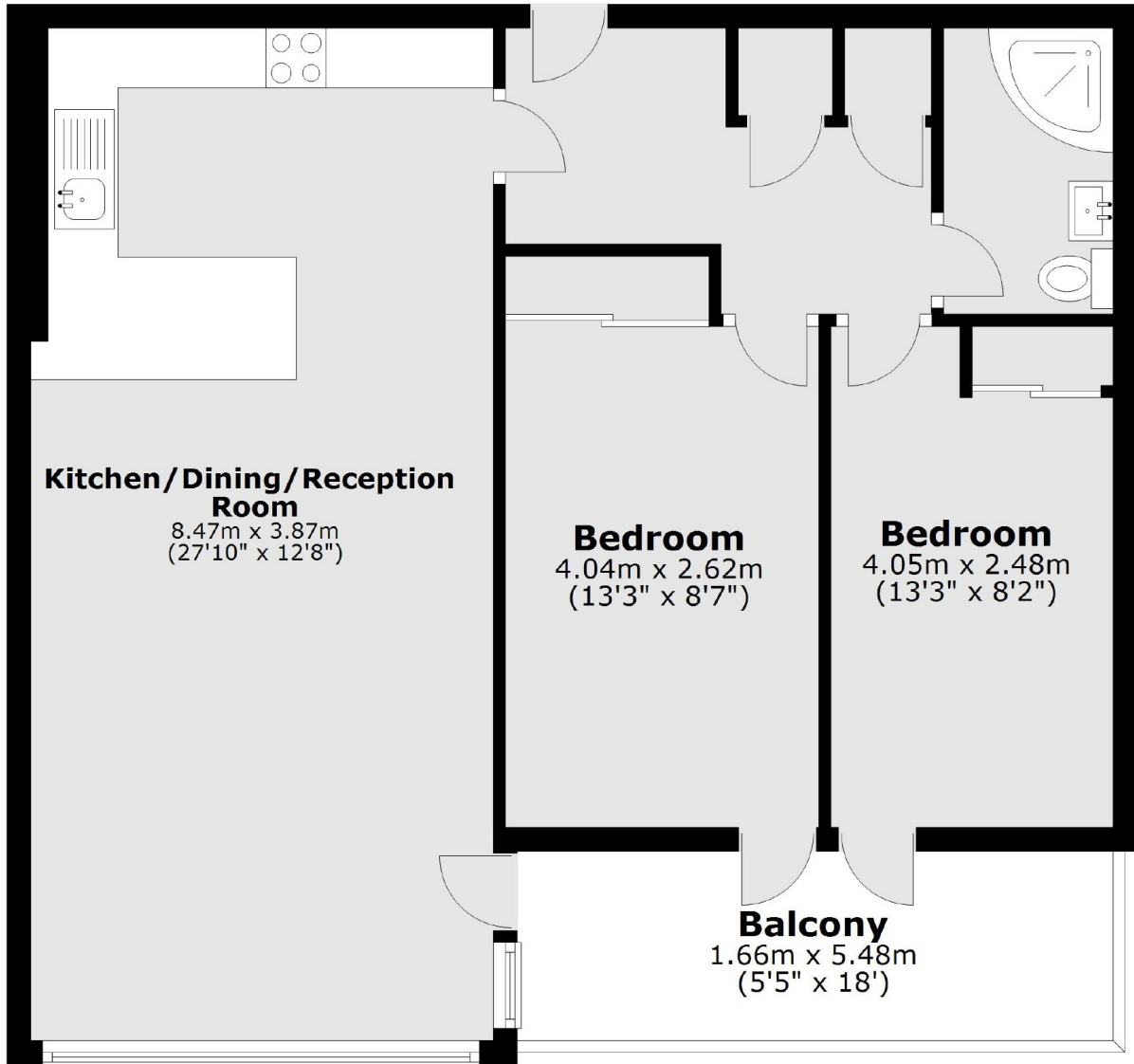
The Brunswick Centre is one of London's and certainly Bloomsbury's most iconic blocks. It is next to Russell Square but also a short walk to King's Cross station. The Brunswick Centre is home to restaurants, shops, cafes and a large Waitrose.

### Features

Brunswick Centre  
Recently Refurbished  
Open Plan Living  
Two Double Bedrooms  
Balcony  
Russell Square Nearby

**Brunswick Centre,  
London, WC1N**

**Third Floor**



**Main area: Approx. 67.5 sq. metres (726.2 sq. feet)**  
Plus balconies, approx. 8.5 sq. metres (92.0 sq. feet)