

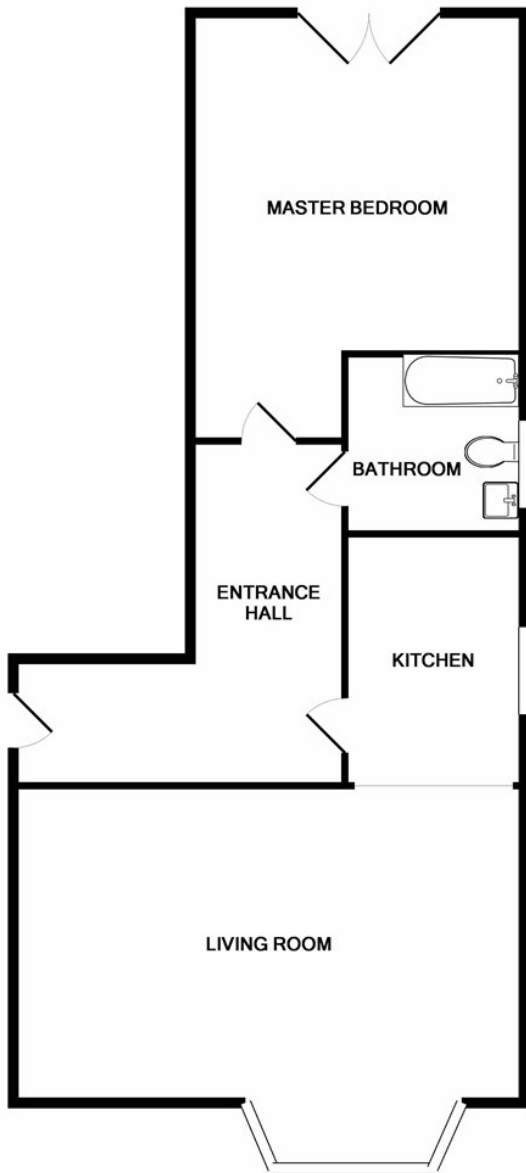


Tower Court
Bristol BS30 8BJ

Price:
£1,100 PCM

Property Features

- Modern Apartment
- First Floor
- 1 Bedroom
- Open Plan Living Area
- Unfurnished
- Off Street Parking
- Gas Central Heating
- Available NOW!



Measurements are approximate. Not to scale. Illustrative purposes only
Made with Metropix ©2017



Full Description

COMMUNUAL ENTRANCE

ENTRANCE HALL

KITCHEN AREA

8'2" x 5'10" (2.49m x 1.80m)

Integrated Fridge. Built in Washing Machine. Oven & Hob.
Open plan to:

LIVING AREA

14'5" x 14'5" (4.40m x 4.40m)

BEDROOM

16'9" x 9'9" (5.12m x 2.99m)

BATHROOM

REAR GARDEN

4 Flaxpits Lane
Winterbourne
Bristol
BS36 1JX

www.aj-homes.co.uk
info@aj-homes.co.uk
01454 252140

Agents Note: Whilst every care has been taken to prepare these sales particulars, they are for guidance purposes only. All measurements are approximate are for general guidance purposes only and whilst every care has been taken to ensure their accuracy, they should not be relied upon and potential buyers are advised to recheck the measurements