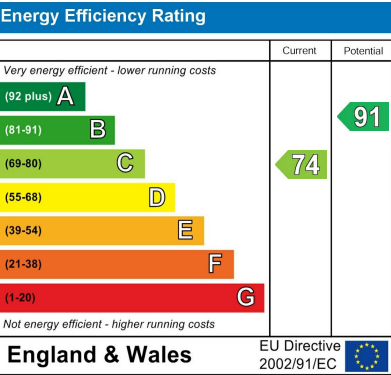


DIRECTIONS

Sat Nav: PE30 3UT



NOTES FOR PURCHASERS:

MEASUREMENTS: All measurements quoted are approximate.

DRAWINGS/ SKETCHES/ PLANS: This representation is provided for general guidance and is not to scale.

VIEWING: If travelling some distance to view this property, and there are any points which you wish to discuss prior to your journey please contact our office and we will be pleased to help. We always endeavor to make our sales details as accurate and reliable as possible.

MONEY LAUNDERING: Under the Protection Against Money Laundering and the Proceeds of Crime Act 2002, we must point out that any successful purchasers who are proceeding with a purchase will be asked for proof of identification and current residency.

PHOTOGRAPHS: Photographs are reproduced for general information and it must not be inferred that any items are included for sale with the property, unless specified within these particulars.

IMPORTANT NOTICE: The services, central heating system, together with any appliances included in these particulars have not been tested by the agents and therefore cannot be guaranteed to be in full working order. We advise all prospective purchasers to employ their own independent qualified experts prior to purchase, as we are not qualified to express an opinion on these matters and therefore take no responsibility for their suitability or function.

"While every care has been taken in the preparation of this brochure, the details contained herein are for guidance purposes only and do not constitute any part of an offer or contract. All descriptions, dimensions, and references to condition are approximate and for general guidance only. The particulars are believed to be correct but their accuracy is not guaranteed.

All measurements are approximate and are for general guidance only. The property is sold subject to its existing condition, fixtures, fittings, and furnishings. Prospective purchasers are advised to conduct their own surveys and checks to satisfy themselves as to the condition and suitability of the property.

This brochure is not intended to be an offer or solicitation for the sale of the property but rather an invitation to treat. The property is being sold by our client, and Norfolk Property Agents are acting as agents for the seller.

Prospective purchasers should rely on their own enquiries and searches rather than the details contained in this brochure. We endeavour to provide accurate information but do not warrant the accuracy or completeness of the information contained herein.

This disclaimer is subject to the provisions of the Consumer Protection from Unfair Trading Regulations 2008, the Property Misdescriptions Act 1991 (where applicable), and all other relevant UK legislation."

"If the property is being sold as part of the estate of the deceased, and the sellers (as executors of the estate) may not have personal knowledge of the property or its contents.

The information contained in these particulars is based on details provided by the executors or other third-party sources. While we believe this information to be accurate, we cannot guarantee its accuracy or completeness.

Prospective purchasers are advised to conduct their own surveys, searches, and enquiries to satisfy themselves as to the condition, suitability, and value of the property.

The sellers and agents disclaim any liability for any inaccuracies or omissions in the particulars, and prospective purchasers should not rely solely on the information contained herein.

This property is sold in its current condition, and the sellers make no representations or warranties as to its condition, fitness for purpose, or compliance with any regulations or laws. By viewing or purchasing this property, prospective purchasers acknowledge that they have read, understood, and agreed to these terms." This disclaimer aims to protect the sellers and agents from potential liability arising from inaccuracies or omissions in the property particulars, while also informing prospective purchasers of the potential risks and encouraging them to conduct their own due diligence. It's essential to seek professional advice to ensure this disclaimer meets your specific needs and complies with relevant laws and regulations.



brittons
estate agents

www.brittons.net



10 Elsing Drive King's Lynn PE30 3UT

TWO BEDROOM TERRACED HOUSE, IDEAL FIRST HOME
IMMACULATELY PRESENTED

King's Lynn

£190,000 Freehold

01553 692828
sales@brittons.net





HALLWAY

UPVC front door with laminate flooring. Opening into kitchen and door to lounge.

KITCHEN

Range of base, wall and drawer units with worktop over, ceramic sink with drainer and mixer tap over, wall mounted boiler, integrated oven with hob over, space for fridge freezer and washing machine. Two windows to the front aspect. Wood effect laminate flooring. Radiator.

LOUNGE / DINER

Wood effect laminate flooring, stairs to first floor, window to rear aspect and door to rear aspect. Radiator.

BEDROOM ONE

Fitted carpet, half height feature wall panelling, two windows to rear aspect and radiator.

BEDROOM TWO

Fitted carpet, window to front aspect and radiator.

SHOWER ROOM

Three piece suite comprising of hand wash basin set within vanity unit, W.C, walk in shower cubicle with thermostatic shower, vinyl flooring.

IMPORTANT INFORMATION

MEASUREMENTS: All measurements quoted are approximate.

DRAWINGS/ SKETCHES/ PLANS: This representation is provided for general guidance and is not to scale.

VIEWING: If travelling some distance to view this property, and there are any points which you wish to discuss prior to your journey please contact our office and we will be pleased to help. We always endeavor to make our sales details as accurate and reliable as possible.

MONEY LAUNDERING: Under the Protection Against Money Laundering and the Proceeds of Crime Act 2002, we must point out that any successful purchasers who are proceeding with a purchase will be asked for proof of identification and current residency.

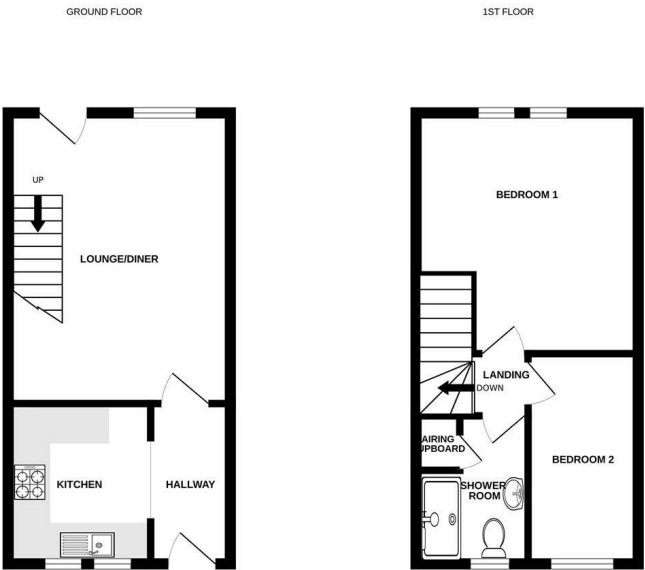
PHOTOGRAPHS: Photographs are reproduced for general information and it must not be inferred that any items are included for sale with the property, unless specified within these particulars.

IMPORTANT NOTICE: The services, central heating system, together with any appliances included in these particulars have not been tested by the agents and therefore cannot be guaranteed to be in full working order. We advise all prospective purchasers to employ their own independent qualified experts prior to purchase, as we are not qualified to express an opinion on these matters and therefore take no responsibility for their suitability or function. "While every care has been taken in the preparation of this brochure, the details contained herein are for guidance purposes only and do not constitute any part of an offer or contract. All descriptions, dimensions, and references to condition are approximate and for general guidance only. The particulars are believed to be correct but their accuracy is not guaranteed.

All measurements are approximate and are for general guidance only. The property is sold subject to its existing condition, fixtures, fittings, and furnishings. Prospective purchasers are advised to conduct their own surveys and checks to satisfy themselves as to the condition and suitability of the property. This brochure is not intended to be an offer or solicitation for the sale of the property but rather an invitation to treat. The property is being sold by our client, and Norfolk Property Agents are acting as agents for the seller.

Prospective purchasers should rely on their own enquiries and searches rather than the details contained in this brochure. We endeavour to provide accurate information but do not warrant the accuracy or completeness of the information contained herein. This disclaimer is subject to the provisions of the Consumer Protection from Unfair Trading Regulations 2008, the Property Misdescriptions Act 1991 ?where applicable?, and all other relevant UK legislation."

Nestled in the sought-after area of Elsing Drive, King's Lynn, this immaculately presented mid-terrace house is an ideal first home for those looking to settle in a vibrant community. The property boasts two bedrooms, providing ample space for relaxation and rest. The inviting reception room serves as a perfect gathering space, ideal for entertaining guests or enjoying quiet evenings at home. The house features a modern shower room, ensuring convenience and comfort for its occupants. One of the standout attributes of this property is the allocated parking, a valuable asset in this popular location. Families will appreciate the proximity to local schools, making the morning school run a breeze. Step outside to discover the enclosed rear garden, a delightful outdoor space perfect for enjoying sunny days, gardening, or simply unwinding after a long day. This charming home combines practicality with a warm and welcoming atmosphere, making it a fantastic opportunity for first-time buyers or those looking to downsize. With its excellent presentation and desirable location, this property is not to be missed. Come and experience the comfort and convenience that Elsing Drive has to offer.



Whilst every attempt has been made to ensure the accuracy of the floorplan contained herein, measurements of doors, windows, rooms and any other items are approximate and no responsibility is taken for any errors or omissions in the information. This plan is for illustrative purposes only and should be used as a guide for any prospective purchaser. The services, systems and appliances shown have not been tested and no guarantee is given as to their operability or efficiency can be given. Made with Mapbox (2023)



