

The Chapel, Godfrey Gardens, Chartham, Canterbury, CT4 7TZ

£1,200 Per Month



2



1



1



E

The Chapel, Godfrey Gardens

Chartham, Canterbury CT4 7TZ

Nestled in the charming village of Chartham, Canterbury, this unique top-floor apartment is a splendid conversion of a former chapel, offering a delightful blend of character and modern living. As you enter, you are greeted by a welcoming hallway that leads into an impressive open-plan kitchen, dining, and living area. The space is enhanced by high ceilings, exposed beams, and original brickwork, creating a warm and inviting atmosphere perfect for both relaxation and entertaining. This room also has a number of fitted cupboards which is a great additional storage benefit.

This apartment boasts two generously sized double bedrooms, providing ample space for rest and privacy. The well-appointed bathroom features a convenient shower over the bath, catering to all your needs. Additionally, the property includes a useful mezzanine area, ideal for extra storage.

For those with a vehicle, the property offers one allocated parking space in a secure area, ensuring peace of mind. The Chapel at Godfrey Gardens is not only a home but a lifestyle choice, set in a picturesque location that combines the tranquillity of village life with easy access to the vibrant city of Canterbury.

This property is perfect for anyone seeking a unique living space with character. Do not miss the opportunity to make this charming chapel conversion your new home. A pet fee for permission to keep a pet may apply under the superior lease.

Rent: £1,200

Deposit: £1,384.61

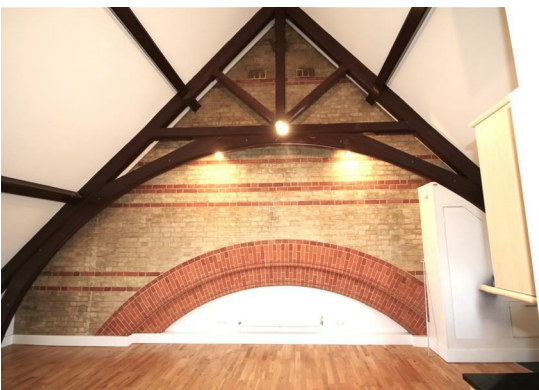
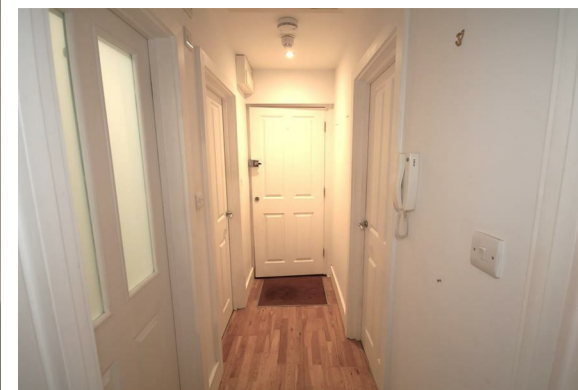
Council Tax: D

Unfurnished

Available: June 2026

Please refer to the fee's tab on our website (www.sallyhatcher.co.uk) for all information on fee's and deposit options

Entry/ Hallway





Bedroom 1
13'10" x 9'8" (4.225 x 2.948)

Living Area
16'0" x 16'9" (4.895 x 5.124)

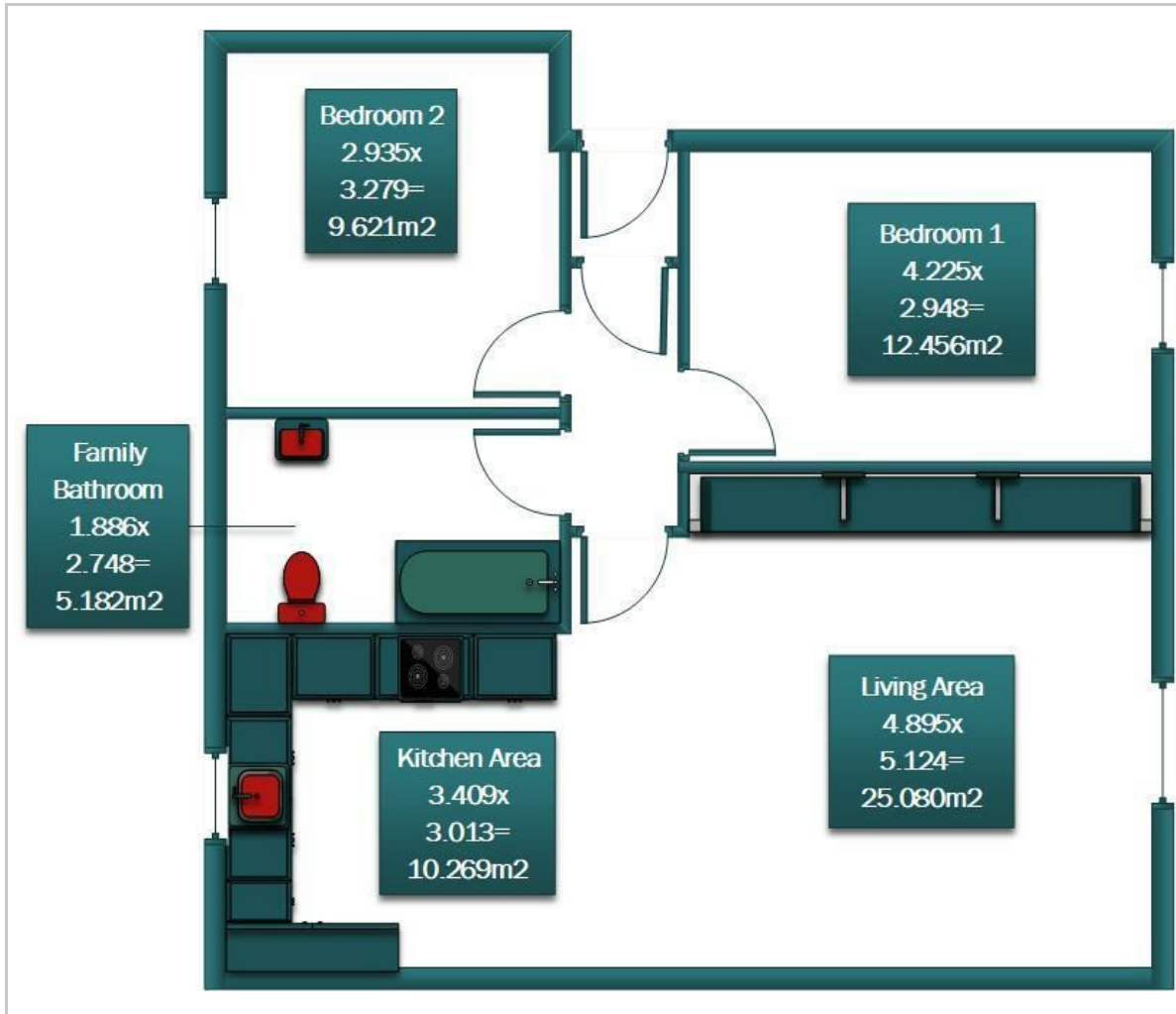
Kitchen Area
11'2" x 9'10" (3.409 x 3.013)

Family Bathroom
6'2" x 9'0" (1.886 x 2.748)

Bedroom 2
9'7" x 10'9" (2.935 x 3.279)



Floor Plan



Viewing

Please contact us on 01227 733888 if you wish to arrange a viewing appointment for this property or require further information.

These particulars, whilst believed to be accurate are set out as a general outline only for guidance and do not constitute any part of an offer or contract. Intending purchasers should not rely on them as statements of representation of fact, but must satisfy themselves by inspection or otherwise as to their accuracy. No person in this firm's employment has the authority to make or give any representation or warranty in respect of the property.

Area Map



Energy Efficiency Graph

