



The Panoramic, Pond Street

Hampstead, NW3

Asking Price £1,595,000

A spectacular two double bedroom, two bathroom penthouse apartment with the huge benefit of two secure underground parking spaces and far-reaching views.

This fabulous apartment is situated on the seventh floor of this renowned and extremely secure purpose-built development served by lifts and a porter.

The property comprises an entrance hall, a 38' x 28' living space, floor to ceiling windows and access to a private balcony, a principal bedroom with built in wardrobes and an en-suite bathroom, a second bedroom, second bathroom and a guest w.c.

The development is extremely well located in the heart of South End Green, a lovely area full of shops including Marks & Spencer, amenities, cafes and restaurants.

Hampstead Heath overground and the open acres of Hampstead Heath are located just 0.1 miles from the property. Sole agent.



The Panoramic, Pond Street Hampstead, NW3

- Penthouse flat
- Two double bedrooms
- Two bathrooms and a guest w.c
- Private balcony with far-reaching views
- Floor to ceiling windows
- Two secure underground parking spaces
- Lifts & a porter
- 0.1 miles to the Overground
- 0.4 miles to the Northern Line



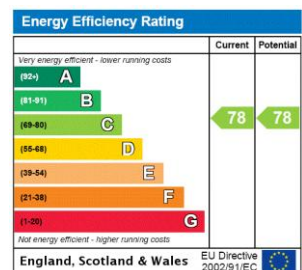
Tenure: Leasehold 103 years 8 months remaining as of May 2026

Service Charge: £12,938 per annum (£3,234.53 per quarter)

Ground Rent: £500 per annum

Local Authority: Camden

Council Tax Band: G



Chestertons Hampstead Sales

55-56 Hampstead High Street

Hampstead

NW3 1QH

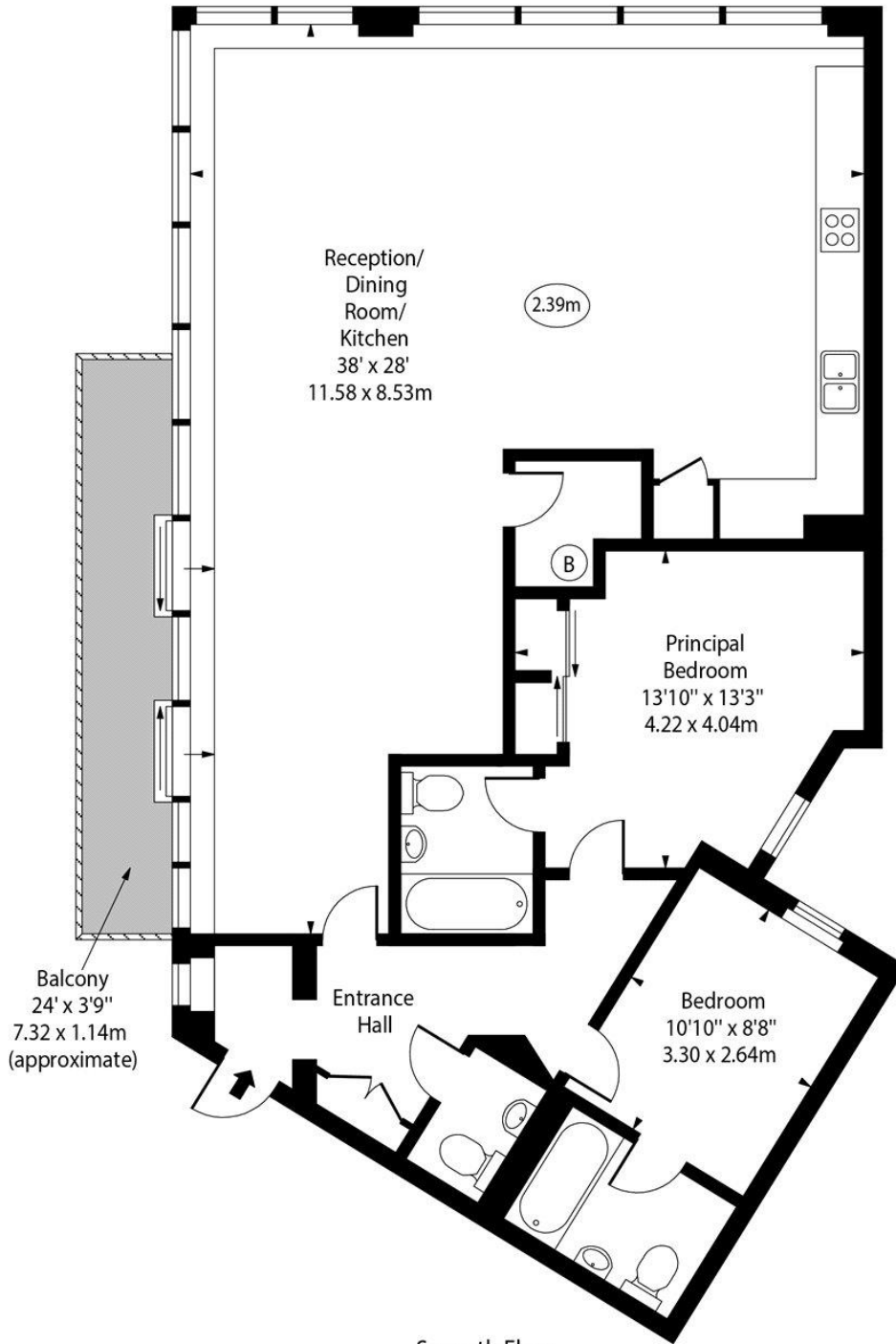
hampstead@chestertons.co.uk

020 7794 3311

chestertons.co.uk

Pond Street,
Hampstead, NW3

○ - Ceiling Height



Seventh Floor

Approx Gross Internal Area 1305 Sq Ft - 121.23 Sq M

For Illustration Purposes Only - Not To Scale

www.goldlens.co.uk

Prepared for Chestertons

Ref. No. 019510E

