

**LONDON  
VICTORIA  
GROUPS** 



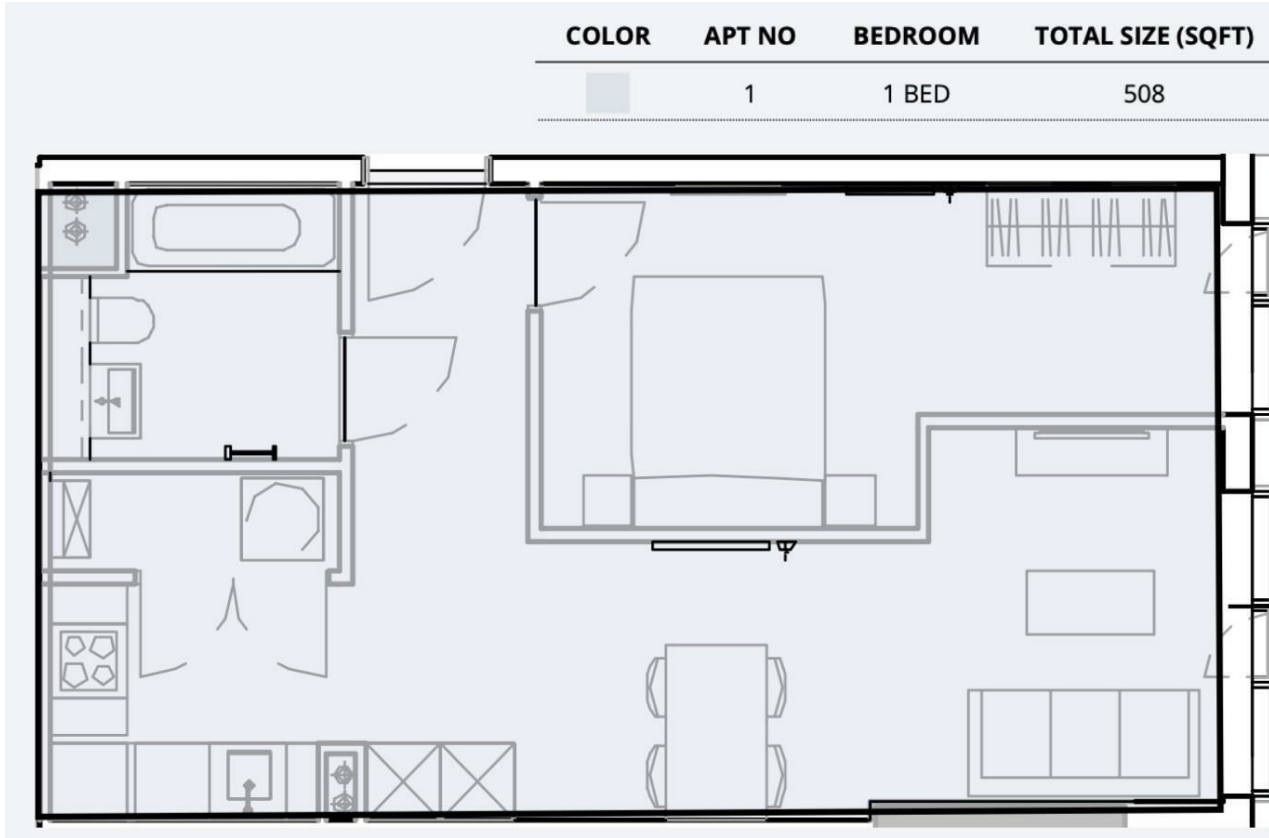
## **80 Port Street** Manchester M1 2EG

- **\*\*ZERO DEPOSIT OPTION\*\***
- Expansive gym & yoga studios
- Bookable dining & event spaces
  - Day-to-night lounges
  - Green space & terraces
- Indoor swimming pool
- Semi-covered roof terrace
- Social & quiet co-work spaces
- Parcel collection services
- Secure bike storage

**£1,350 Per Month**



Local Authority  
Council Tax Band **New Build**  
EPC Rating **B**



**Manchester Office**

Peter House Oxford Street, Manchester,  
M1 5AN

**Contact**

[www.londonvictoriagroups.co.uk](http://www.londonvictoriagroups.co.uk)

Agents Note: Whilst every care has been taken to prepare these particulars, they are for guidance purposes only. All measurements are approximate and for general guidance purposes only and whilst every care has been taken to ensure accuracy, they should not be relied upon and potential buyers/tenants are advised to recheck the measurements.