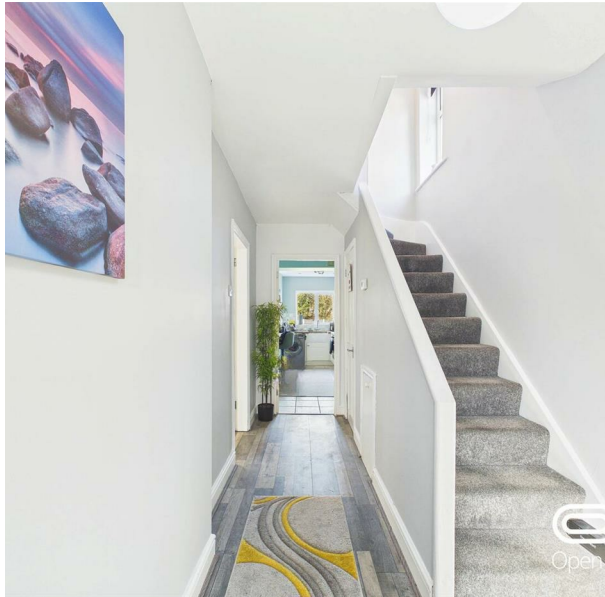


Chesham Road, Stafford, ST16 3JP
Offers Over £250,000
Council Tax Band: B

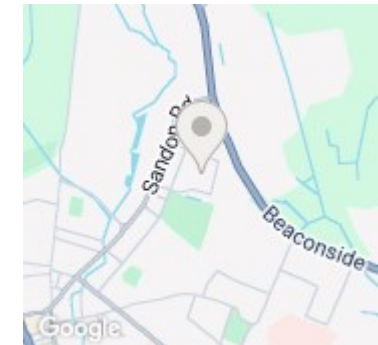


Three-Bedroom Family Home | Spacious Living | Large Rear Garden | Driveway

Positioned on the ever-popular Chesham Road in Stafford, this extended three-bedroom semi-detached home offers generous living space, a fantastic rear garden, and excellent practicality for modern family life.



Open House Staffordshire



Energy Efficiency Rating		
	Current	Potential
Very energy efficient - lower running costs		
(92 plus) A		
(81-91) B		85
(69-80) C	70	
(55-68) D		
(39-54) E		
(21-38) F		
(1-20) G		
Not energy efficient - higher running costs		
England & Wales	EU Directive 2002/91/EC	