

HUNTERS[®]

HERE TO GET *you* THERE



Cumberland Close

Kingswinford, DY6 8JE

£400,000



30 Cumberland Close

Kingswinford, DY6 8JE

£400,000



Front of the Property

With a block paved driveway to front, decorative chipping stones and mature shrub borders, gated side access, outdoor lights and a double glazed door to porch.

Porch

With a double glazed door to front, double glazed windows to front and side and a double glazed door to the entrance hall.

Entrance Hall

With a double glazed door to front, doors leading to various rooms, stairs leading to the first floor landing and a central heating radiator.

Lounge

14'11" x 11'0" (4.55 x 3.37)

With a door leading from the entrance hall, double glazed window to front, door to kitchen dining room, storage cupboard, recessed spotlights and a central heating radiator.

Kitchen Dining Room

20'9" x 13'4" (6.35 x 4.08)

With a door leading from the lounge, range of fitted wall and base units, plinth lights, worksurfaces over with matching upstands, tiled splashback, breakfast bar, integrated bins, dishwasher, fridge and freezer, one and a half bowl sink and drainer, integrated oven, induction hob with stainless steel cooker hood above, recessed spotlights, vertical central heating radiator, door to rear hall, double glazed doors to conservatory and garden.

Conservatory

9'8" x 8'9" (2.97 x 2.67)

With a double glazed sliding door leading from the kitchen, tiled floor, recessed spotlights, double glazed french doors to garden and double glazed windows to side and rear.

Rear Hall

With a door leading from the kitchen, doors leading to WC and play room.

WC

With a door leading from the rear hall, WC and wash hand basin set into vanity unit with splash back, recessed spotlights, extractor fan and a chrome heated towel rail.

Study / Playroom

13'2" x 7'1" (4.02 x 2.18)

With a door leading from the rear and entrance hall, storage cupboard housing wall mounted boiler and space for tumble dryer, double glazed window to front and recessed spotlights.

Landing

With stairs leading from the entrance hall, doors leading to various rooms, loft access and storage cupboard.

Tel: 01384 443331

Bedroom One

13'11" x 8'1" (4.25 x 2.47)

With a door leading from the landing, double glazed window to front, door to en suite and a central heating radiator.

En Suite

With a door leading from bedroom one, WC and wash hand basin set into vanity unit with splash back, walk in shower cubicle, storage cupboard, double glazed window to front, recessed spotlights, extractor fan and a chrome heated towel rail.

Bedroom Two

13'1" x 7'6" (4.01 x 2.29)

With a door leading from the landing, double glazed window to front and a central heating radiator.

Bedroom Three

9'9" x 8'2" (2.99 x 2.49)

With a door leading from the landing, double glazed window to rear and a central heating radiator.

Bedroom Four

12'4" x 5'8" (3.76 x 1.74)

With a door leading from the landing, fitted wardrobes, double glazed window to rear and a central heating radiator.

Bathroom

5'6" x 6'0" (1.68 x 1.83)

With a door leading from the landing, wash hand basin and WC set into vanity unit, bath with shower over and splash back, recessed spotlights, extractor fan, double glazed window to rear and a chrome heated towel rail.

Garden

With double glazed doors leading from the conservatory and the kitchen, patio area, gate to lawn beyond, further patio area, garden shed, mature shrub borders, outdoor tap and gated side access.



Road Map



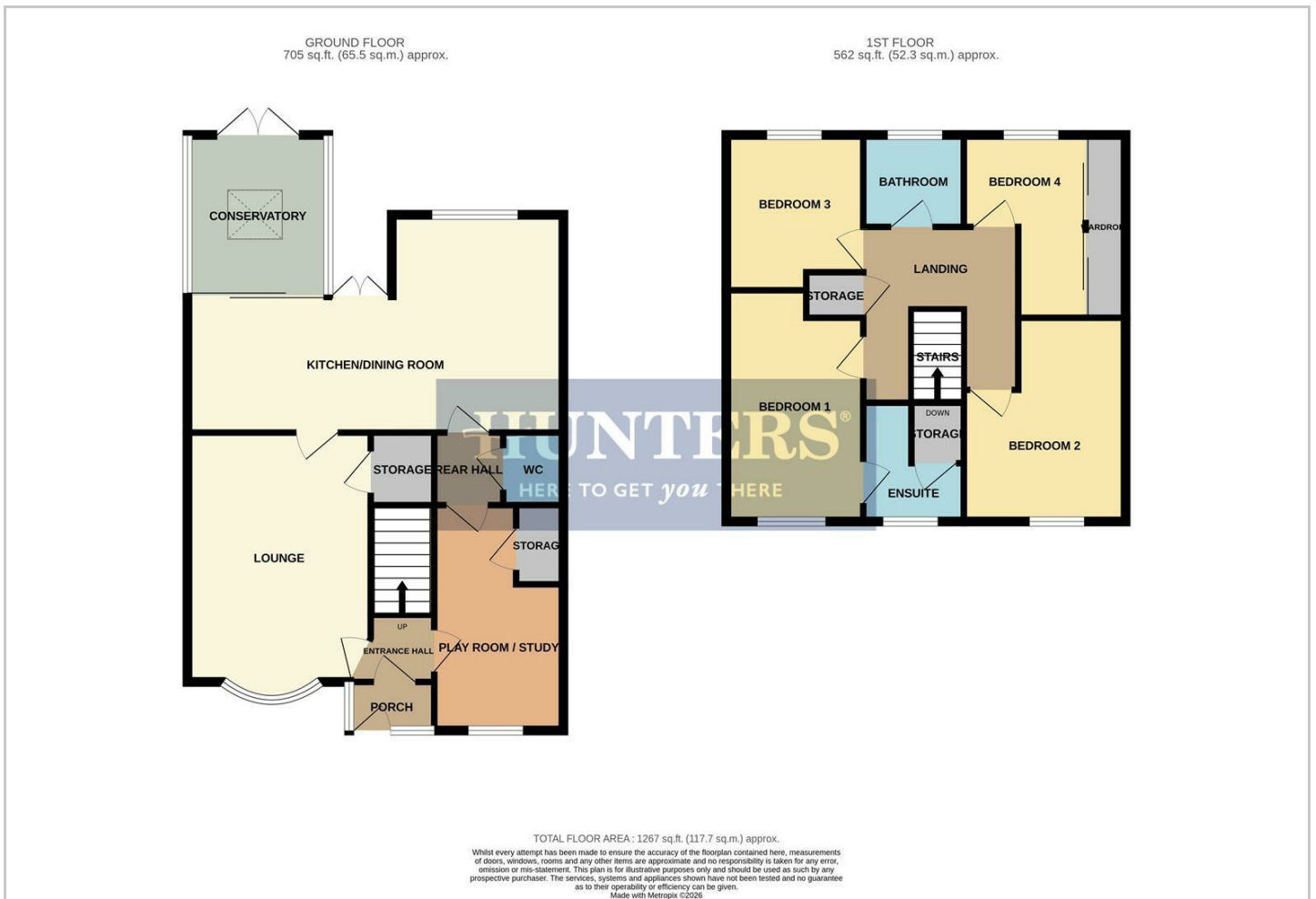
Hybrid Map



Terrain Map



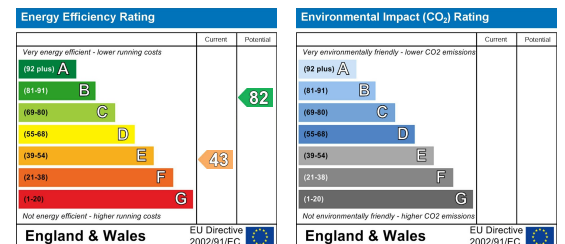
Floor Plan



Viewing

Please contact our Hunters Stourbridge Office on 01384 443331 if you wish to arrange a viewing appointment for this property or require further information.

Energy Efficiency Graph



These particulars are intended to give a fair and reliable description of the property but no responsibility for any inaccuracy or error can be accepted and do not constitute an offer or contract. We have not tested any services or appliances (including central heating if fitted) referred to in these particulars and the purchasers are advised to satisfy themselves as to the working order and condition. If a property is unoccupied at any time there may be reconnection charges for any switched off/disconnected or drained services or appliances - All measurements are approximate. **THINKING OF SELLING?** If you are thinking of selling your home or just curious to discover the value of your property, Hunters would be pleased to provide free, no obligation sales and marketing advice. Even if your home is outside the area covered by our local offices we can arrange a Market Appraisal through our national network of Hunters estate agents.