



# Fairfax Place

South Hampstead, NW6

£6,500 per month  
(£1,500 per week)

Rarely available, a four bedroom house meticulously refurbished with the use of architects and interior designers, benefitting from a west facing garden.

Fairfax Place was built by the Eyre Estate in 1961 and is a quiet cobbled street well located in South Hampstead.

The house has wet underfloor heating throughout with electric underfloor heating in both bathrooms, smoked Oak engineered hardwood flooring, Laufen sanitary ware, hand glazed porcelain tiles in bathrooms, Miele Kitchen appliances with Quartz countertops and full splashback.

This delightful house is ideally located close to numerous restaurants, cafes & amenities, as well as being only 0.3 miles from Swiss Cottage Underground (Jubilee Line) and 0.4 miles from Finchley Road Underground (Metropolitan & Jubilee Lines).

**CHESTERTONS**



# Fairfax Place

## South Hampstead, NW6

- Meticulously refurbished
- Immaculate throughout
- Four bedrooms
- Double reception
- Miele kitchen appliances
- Landscaped west facing patio garden



**Minimum Term:** 12 months  
**Deposit Required:** £9,000.00  
**Local Authority:** London Borough Of Camden  
**Council Tax Band:** G  
**EPC Rating:** C  
**Furnished**

Score	Energy rating	Current	Potential
92+	A		
81-91	B		
69-80	C	79 C	88 B
55-68	D		
39-54	E		
21-38	F		
1-20	G		

### *Chestertons Hampstead Lettings*

55-56 Hampstead High Street  
 Hampstead  
 London  
 NW3 1QH  
[hampsteadlettingsusers@chestertons.co.uk](mailto:hampsteadlettingsusers@chestertons.co.uk)  
 02077941125  
[chestertons.co.uk](http://chestertons.co.uk)

Additional tenant charges apply (fees apply to non-AST tenancies only)  
 Tenancy Agreement Fee: £300  
 References per Tenant/Guarantor: £60  
 Inventory check (approx. £100 – £250 inc. VAT)  
[chestertons.co.uk/property-to-rent/applicable-fees](http://chestertons.co.uk/property-to-rent/applicable-fees)

# Fairfax place, London, NW6

Approximate Gross Internal Floor Area = 112.6 sq m / 1213 sq ft

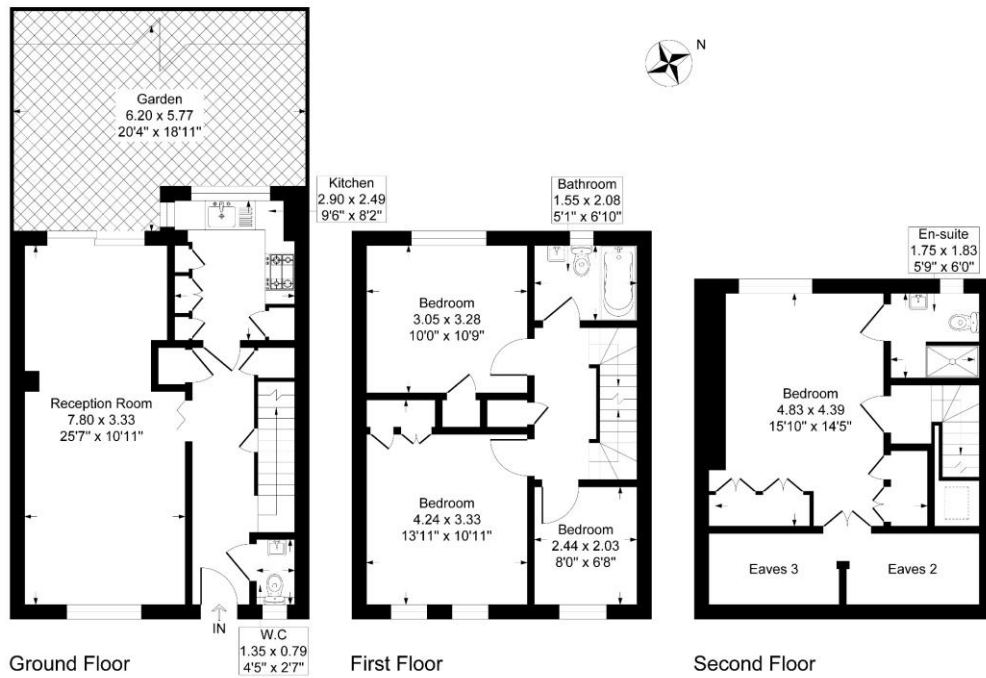


Illustration for identification purposes only, measurements are approximate, not to scale.

