



smarthomes

## Ferndale Road

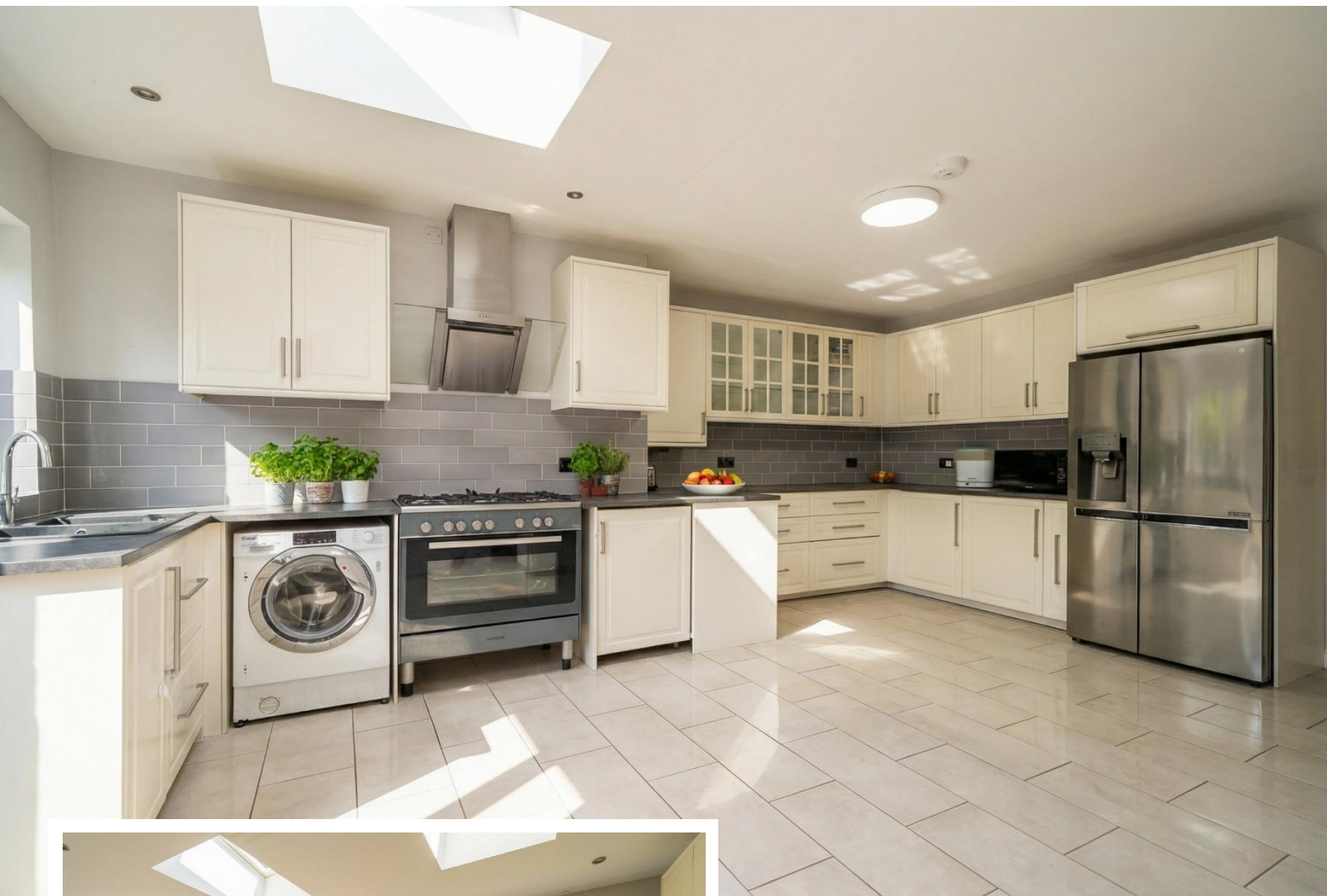
Hall Green, Birmingham

- A Well Presented & Extended Semi-Detached Property
- Four Bedrooms
- Ground Floor Bedroom With En-Suite
- Extended Open Plan Family/Kitchen Breakfast Room
- Re-Fitted Family Bathroom
- No Upward Chain

**£490,000**

Current EPC Rating - C  
Current Council Tax Band - D





## Property Description

A well presented and extended four bedroom semi detached property benefiting from ground floor bedroom with en suite shower room, lounge, extended open plan family/kitchen breakfast room, guest WC, re-fitted family bathroom, westerly facing rear garden, off-road parking and no upward chain

### Tenure

We are advised by the vendor that the property is freehold. We would advise all interested parties to obtain verification through their own solicitor or legal representative

EPC supplied by Nigel Hodges  
Current council tax band – D



## Rooms & Measurements

Entrance Hall

Guest WC

Lounge to Front - 3.33m x 4.6m (10'11" x 15'1")

Extended Family Room - 7.34m x 3.33m (24'1" x 10'11")

Extended Re-Fitted Kitchen/Breakfast Room to Rear  
4.27m x 6.07m (14'0" (widening to 22' 4") x 19'11")

Ground Floor Bedroom Four to Front  
2.31m x 4.01m (7'7" x 13'2")

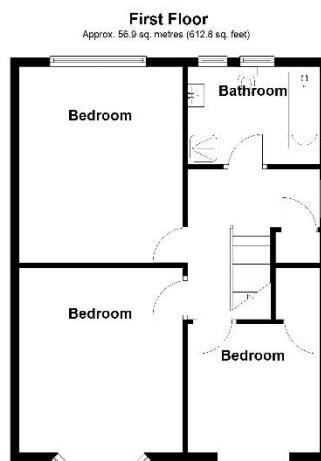
Wet Room

Bedroom One to Front - 4.9m x 3.3m (16'1" x 10'10")

Bedroom Two to Rear - 3.35m x 4.11m (11'0" x 13'6")

Bedroom Three to Front - 3.05m x 2.34m (10'0" x 7'8")

Re-Fitted Bathroom to Rear



Total area: approx. 149.3 sq. metres (1606.9 sq. feet)

316 Stratford Road  
Shirley  
Solihull  
B90 3DN

[www.smart-homes.co.uk](http://www.smart-homes.co.uk)  
0121 744 4144

Agents Note: Whilst every care has been taken to prepare these particulars, they are for guidance purposes only. We believe all information to be correct from the day of marketing however, we advise and recommend that your conveyancer and or surveyor verifies all information supplied. All measurements are approximate and are for general guidance purposes only and whilst every care has been taken to ensure their accuracy, they should not be relied upon and potential buyers are advised to recheck the measurements.