



HORMEAD ROAD, W9

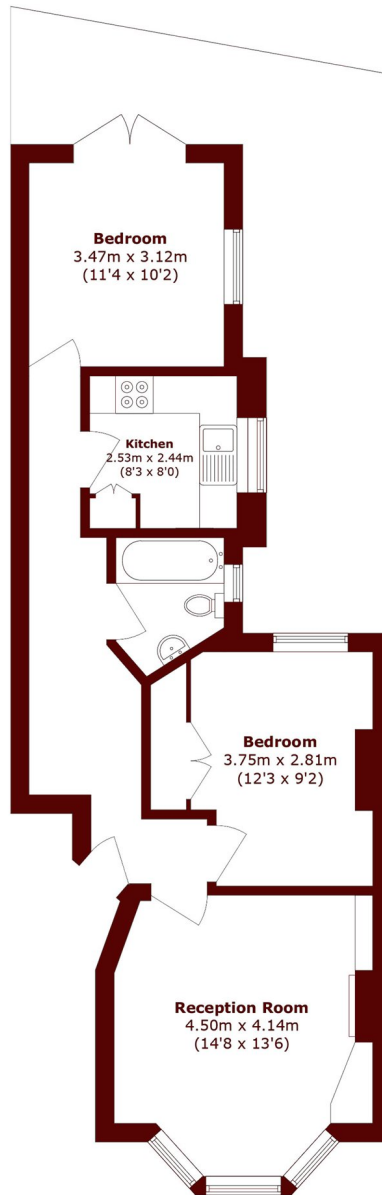
£600,000

Situated within a Victorian conversion, a two bedroom and well presented ground floor flat. The property offers two double bedrooms, a separate fitted kitchen, and a bright reception room with a bay window. Further

Two bedrooms
Period conversion
Private courtyard garden

Canal Views
Walking distance of Golborne &
Portobello Road

STEP INSIDE HORMEAD ROAD



Total area (approx.): 60.6 sq. m (652.3 sq. ft)

Little Venice
020 7993 3050

Energy Rating: D We aim to make our particulars both accurate and reliable. However, they are not guaranteed; nor do they form part of an offer or contract. If you require clarification on any points then please contact us, especially if you're traveling some distance to view. Please note that appliances and heating systems have not been tested and therefore no warranties can be given as to their good working order

**MARSH &
PARSONS**