



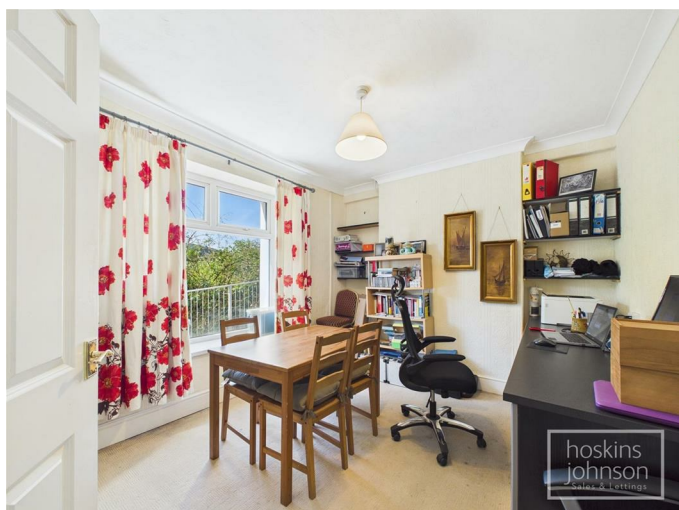
16 Heath Crescent, Pontypridd, CF37 2LB
Offers In The Region Of £145,000

Kitchen 8'2" x 8'9" (2.49 x 2.67)



Gas hob with an electric oven accompanied by a sink.

Dining Room 12'5" x 10'1" (3.8 x 3.09)



Double glazed window over looking the front of the property.

Living Room 11'7" x 11'8" (3.54 x 3.57)



Double glazed window over looking the rear of the property. Blocked off fire place with understairs storage.

Utility/WC 5'8" x 6'0" (1.74 x 1.85)

Space for a single fridge, tumble dryer and a washing machine

Outside



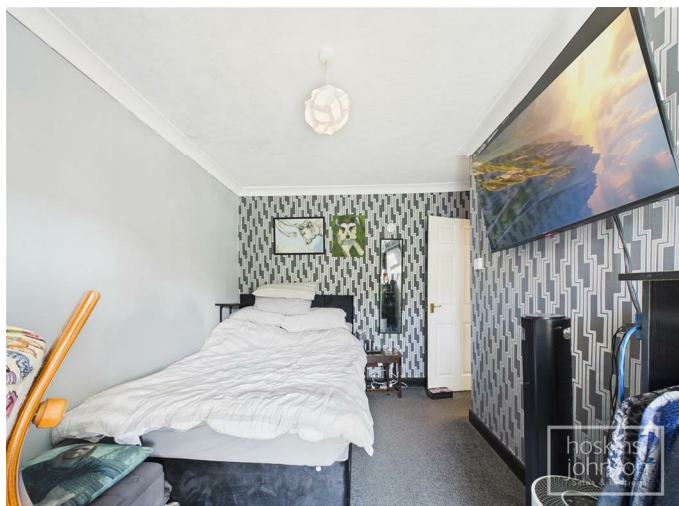
Bedroom 2 9'10" x 8'11" (3.00 x 2.72)



Double glazed window over looking the rear of the property, with an original fire place feature.

First Floor Landing 5'5" x 12'1" (1.66 x 3.69)

Bedroom 1 8'2" x 13'3" (2.51 x 4.04)



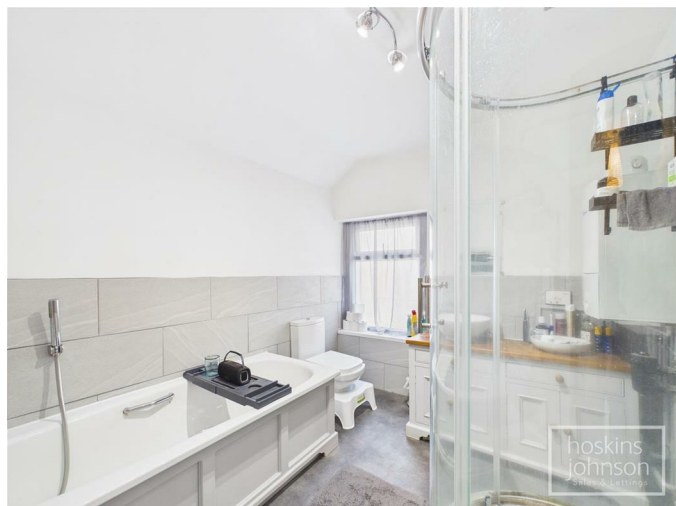
Original fire place feature with a double glazed window over looking the front of the property.

Bedroom 3 7'2" x 9'8" (2.19 x 2.97)



Double glazed window over looking the front of the property also accompanied by a single radiator and the attach hatch.

Bathroom 8'2" x 8'9" (2.50 x 2.69)

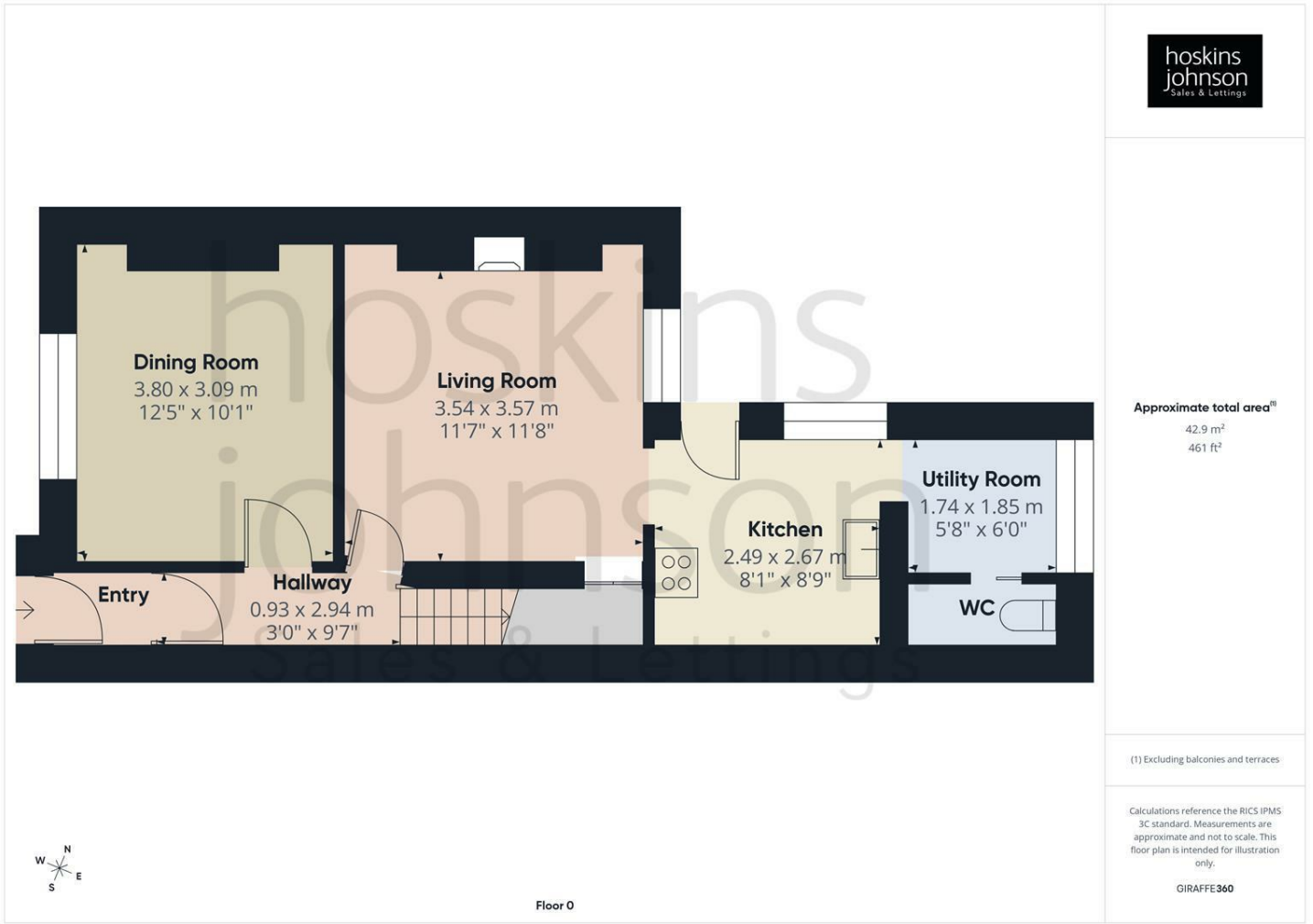


Walk in shower with a separate bath, wash hand basin and a toilet.

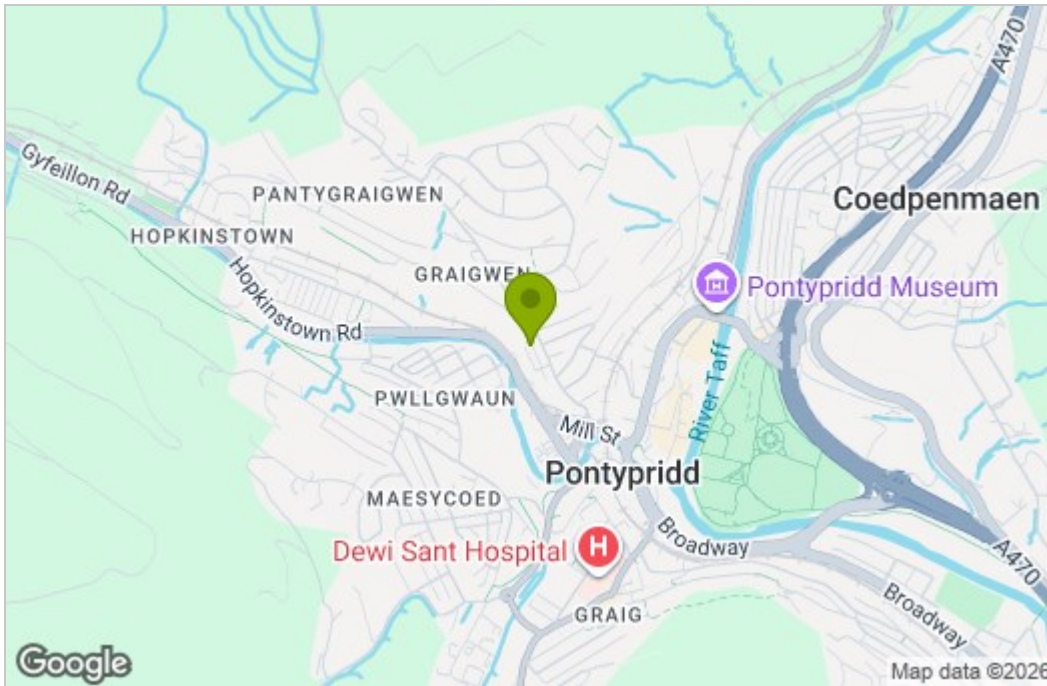
Entrance Hallway 3'0" x 9'7" (0.93 x 2.94)

One radiator, with PVC door

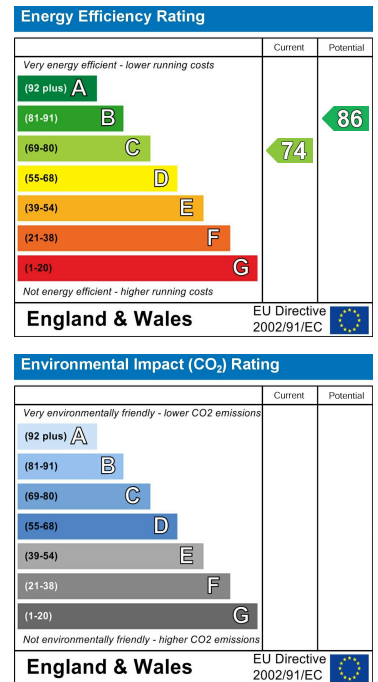
Floor Plan



Area Map



Energy Efficiency Graph



These particulars, whilst believed to be accurate are set out as a general outline only for guidance and do not constitute any part of an offer or contract. Intending purchasers should not rely on them as statements of representation of fact, but must satisfy themselves by inspection or otherwise as to their accuracy. No person in this firm's employment has the authority to make or give any representation or warranty in respect of the property.

22 Market Street, Pontypridd, CF37 2ST

Tel: 01443 404093 Email: pontypridd@hoskinsjohnson.co.uk www.hoskinsjohnson.co.uk