



Price
£650,000

Freehold

4x  2x  2x 

**Coach Road, Egerton,
Ashford, Kent, TN27**

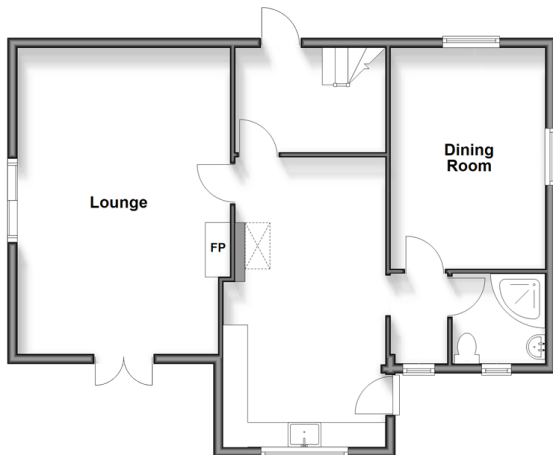
OVER 60?

Secure this property
for up to **59% less!**

Wards
Helping you move forwards

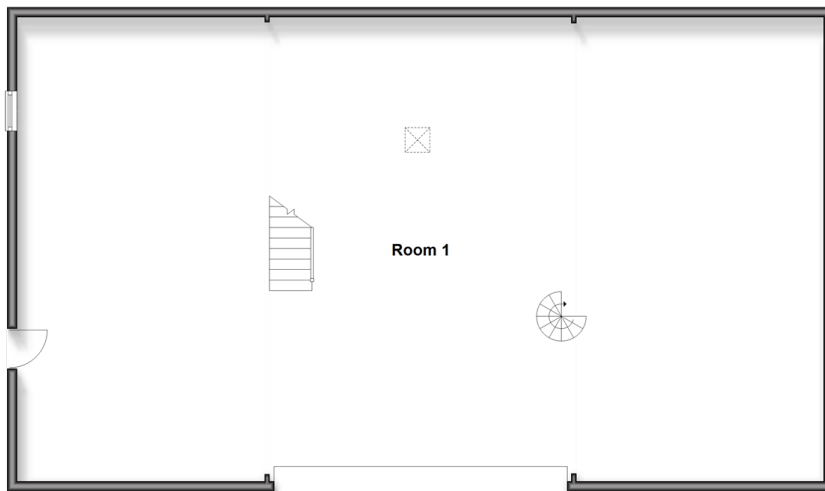
Ground Floor

Approx. 71.6 sq. metres (771.1 sq. feet)



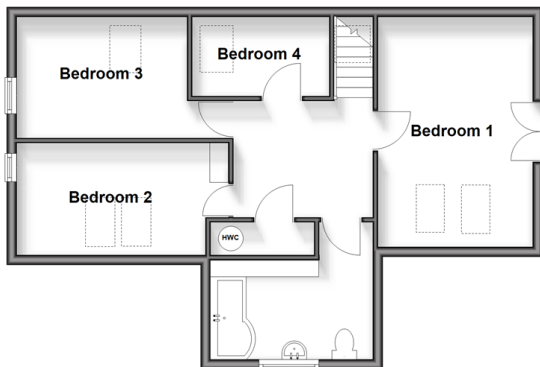
Outbuilding Ground Floor

Approx. 153.2 sq. metres (1649.2 sq. feet)



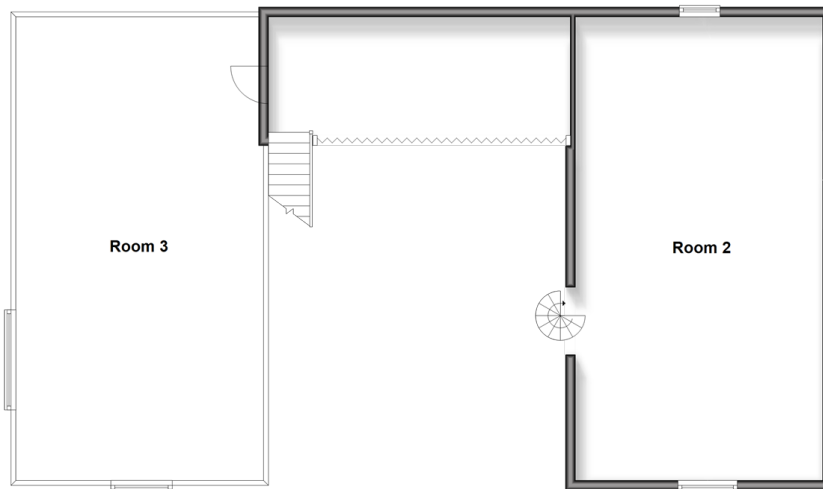
First Floor

Approx. 56.8 sq. metres (611.2 sq. feet)



Outbuilding First Floor

Approx. 61.9 sq. metres (666.5 sq. feet)



Accommodation

GROUND FLOOR

Kitchen: 14'8 x 10'9 (4.47m x 3.28m)

Utility

Shower Room

Dining Room: 14'8 x 10'0 (4.47m x 3.05m)

Lounge: 20'8 x 12'3 (6.30m x 3.74m)

FIRST FLOOR

Landing

Bedroom 1: 13'5 x 10'0 (4.09m x 3.05m)

Bedroom 4: 8'10 x 5'2 (2.69m x 1.58m)

Bedroom 3: 11'3 x 8'1 (3.43m x 2.47m)

Bedroom 2: 12'9 x 6'11 (3.89m x 2.11m)

Bathroom

OUT BUILDING

OUT BUILDING GROUND FLOOR

Room 1

OUT BUILDING FIRST FLOOR

Room 3

Room 2

OUTSIDE

Front and Rear Gardens

Driveway and Garage



Main features

- Located within rural Egerton with far reaching views
- Potential for development (subject to planning)
- Generous living accommodation with two reception rooms and large kitchen
- Fantastic out building currently used as a workshop but perfect for storage or development(subject to planning)



Nearest Schools

Primary Schools: Egerton C of E Primary 1.1 miles, Lenham Primary 2.1 miles, Charing C of E Aided Primary 2.3 miles
Secondary Schools: Heath Farm School 0.7 miles, Swadelands School 2.3 miles, Goldwyn Community



Transport Information

Train Stations: Lenham 2.1 miles, Pluckley 3.5 miles, Harrietsham 3.6 miles



Address

Coach Road, Egerton, Ashford, Kent, TN27



Directions

For directions to this property please contact us.



Call Headcorn Branch 01622 890435 ■ wardsofkent.co.uk



- If buying to let, the energy rating will need to be improved to at least 'E' rating before you can let the property
- Appliances & services are untested, dimensions are approximate and floor plans are not to scale

- Legal advice should be taken to verify fixtures/fittings, planning, alterations and/or lease details
- Through a Homewise Home For Life Plan people aged 60+ can secure this property for up to 50% less, by purchasing a Lifetime Lease.



12722046/20251117/DB/HS1