



2 Bedrooms

Flat

Located in London

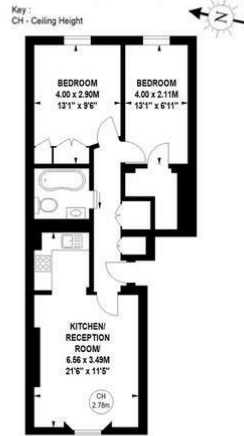
£3,500 Per month



Hello@savipropertyconsulting.com

www.savipropertyconsulting.com

St. Petersburg Place, W2
Approximate gross internal area
54.82 sq m / 590 sq ft



Ground Floor

The floor plan is not to scale and measurements and areas shown are approximate and therefore should be used for illustrative purposes only. The plan has been prepared in accordance with the RICS code of Measuring Practice and whilst we have confidence in the information produced, it must not be relied on. If there is any aspect of particular importance, you should carry out or commission your own inspection of the property.
Copyright of FeaturePRO.

A beautifully presented two bedroom apartment set on the raised ground floor of this characterful period building, smartly furnished and offering a cosy and warm atmosphere throughout.

The property features a charming reception room opening to a fully fitted kitchen, two double bedroom with ample storage and a separate dressing room, a stylish bathroom completes the accommodation.

Perfectly positioned, on a quiet tree-lined street moments from the green spaces of Hyde Park and Kensington Gardens as well as a short walk to Bayswater, Queensway and Notting Hill Gate tube stations.

Energy Efficiency Rating: C

Agents Note: Whilst every care has been taken to prepare these particulars, they are for guidance purposes only. All measurements are approximate and are for general guidance purposes only and whilst every care has been taken to ensure their accuracy, they should not be relied upon and potential buyers/tenants are advised to recheck the measurements.



24 Notting Hill Gate

London

W11 3LB

Hello@savipropertyconsulting.com

www.savipropertyconsulting.com