



Richborne Terrace, SW8

£600,000

A charming two bedroom garden flat in excellent condition throughout. Benefitting from fabulous entertaining space and a bespoke kitchen there are two bathrooms, a private entrance and direct access onto a private south facing garden.

Sought after Richborne Terrace is perfectly located to access the many transport links available including Oval, Stockwell, and Vauxhall underground stations. There are many local shops close by as is Kennington Park.

Features

- Two Bedrooms
- Private Garden
- Excellent Condition
- Private Entrance
- Two Bathrooms
- Share of Freehold



Richborne Terrace, SW8

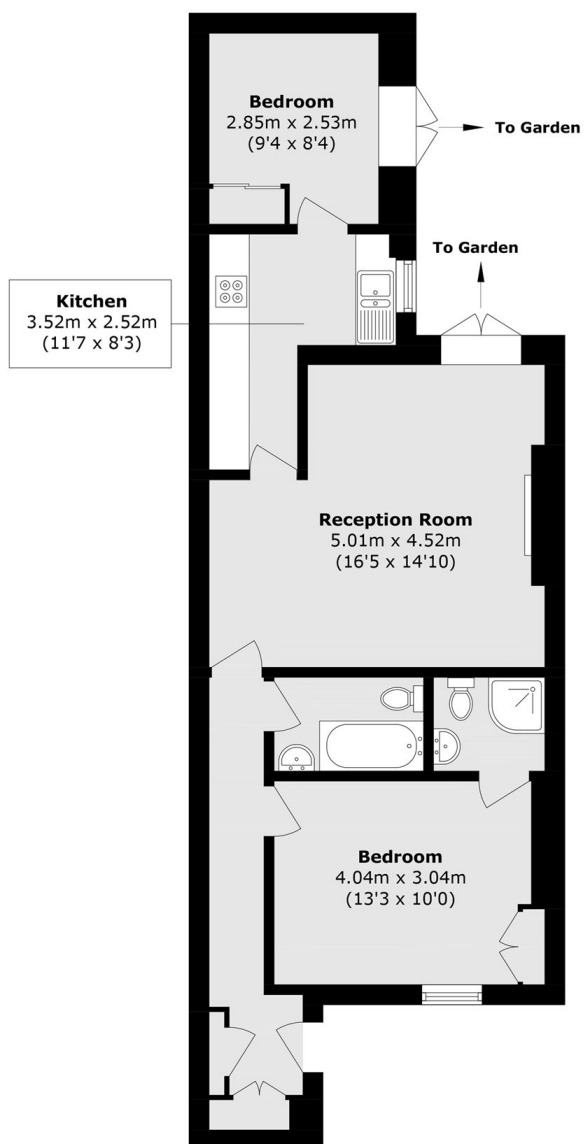
This charming home positioned on the lower ground floor has a private entrance and leads through into a bright front facing bedroom complete with built-in wardrobes and access to a stylish ensuite shower room. There is a second double bedroom which is served by a well finished bathroom.

The high specification and bespoke kitchen is the real heartbeat of this gorgeous home, combining seamlessly with the reception area, creating the perfect space for those who love to cook and entertain. There is then access onto a private south facing paved garden which is a real sun trap.

Finished to an excellent standard throughout with a combination of exposed wooden and tiled floors this turnkey home has a share of the freehold and is ready for the next buyers to make it their own.



Richborne Terrace, London, SW8



Total area (approx.): 63.6 sq. m (684.6 sq. ft)