



## Hanger Vale Lane, W5

£635,000

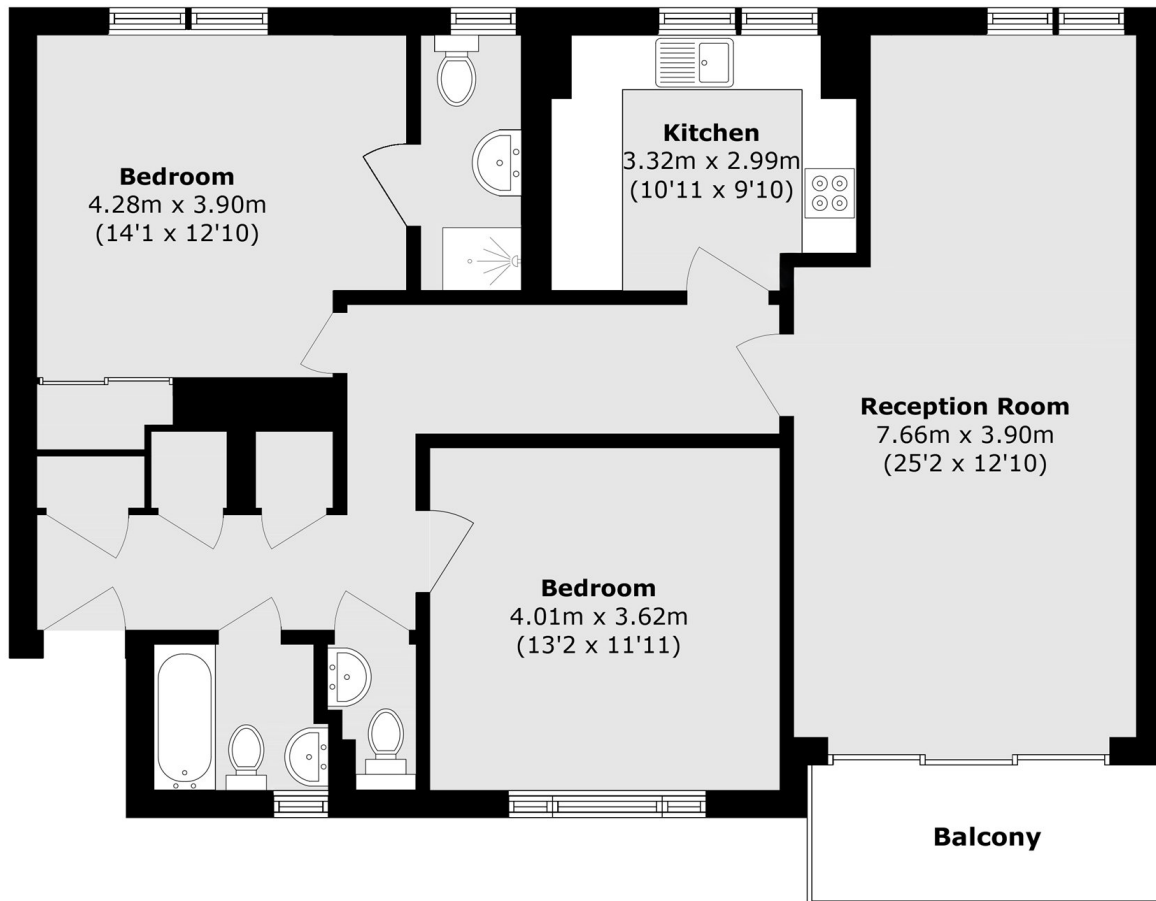
At over 1000 sqft this sizeable, bright first floor apartment features a separate Kitchen, two double bedrooms and a double reception room leading out to a private balcony. You have the added benefit of lift access, a private garage, beautifully landscaped communal gardens and a long lease at 980 years.

Tucked away in an exclusive spot, you are just minutes from North Ealing Station and Ealing Common. Ealing Broadway close to hand for the Elizabeth Line, while the M4 and A40 provide easy road links. This ideally located home also falls within the sought-after Ada Lovelace school catchment.

### Features

- Over 1000 sqft
- 1st Floor With Lift
- Two Bedrooms
- Double Reception
- Private Balcony
- Private Garage

# Hanger Vale Lane, London, W5



Total area (approx.): 94.5 sq. m (1,021.5 sq. ft)  
Balcony area (approx.): 5.6 sq. m (60.2 sq. ft)