



Guide Price
£560,000

Freehold

4x  2x  1x 

**Lower Sands,
Dymchurch, Kent, TN29**

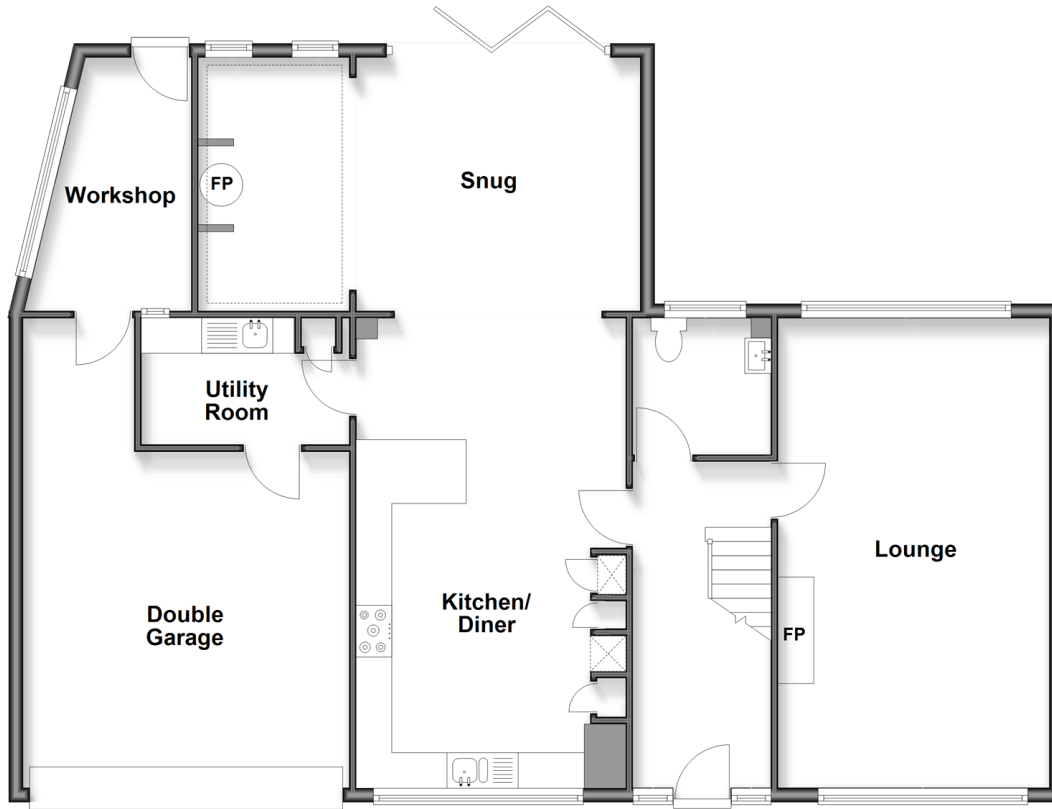
OVER 60?

Secure this property
for up to **59% less!**

Wards
Helping you move forwards

Ground Floor

Approx. 125.9 sq. metres (1355.0 sq. feet)



First Floor

Approx. 78.8 sq. metres (847.7 sq. feet)



Accommodation

GROUND FLOOR

Entrance Hall

Kitchen/Diner: 21'8 x 12'5 (6.61m x 3.79m)

Snug: 12'10 x 11'8 (3.91m x 3.56m) plus 8'0 x 11'3 (2.44m x 3.43m)

Cloakroom

Utility Room: 9'6 x 5'10 (2.90m x 1.78m)

Lounge: 21'7 x 12'5 (6.58m x 3.79m)

FIRST FLOOR

Landing

Bedroom 1: 12'10 x 11'8 (3.91m x 3.56m)

En-Suite Shower Room: 7'11 x 5'2 (2.41m x 1.58m)

Bedroom 2: 12'3 x 11'2 (3.74m x 3.41m)

Bedroom 3: 12'5 x 11'1 (3.79m x 3.38m)

Bedroom 4: 10'3 x 9'10 (3.13m x 3.00m)

Bathroom: 8'11 x 6'3 (2.72m x 1.91m)

OUTSIDE

Off Road Parking

Double Garage: 22'4 (6.81m) narrowing to 15'9 (4.80m) x 14'5 (4.40m)

Front & Rear Gardens

Workshop: 12'7 x 6'9 (3.84m x 2.06m)



Main features

- Immaculate home only a short walk to Dymchurch's sandy beach
- Spacious snug with log burner and bi-fold doors
- Stunning kitchen fitted with integrated dishwasher, warming drawer and large fridge
- Solar panels generating approximately £1800 per year
- Large lounge to relax in, useful utility room and workshop



Nearest Schools

Primary Schools: Dymchurch Primary 0.9 miles, Palmarsh Primary 2.4 miles, Lympne Primary 2.8 miles

Secondary Schools: Brockhill Park Performing Arts College 3.8 miles, Marsh Academy 4.4 miles



Transport Information

Train Stations: Appledore 8.6 miles, Ham Street 14. miles



Address

Lower Sands, Dymchurch, Kent, TN29



Directions

For directions to this property please contact us.



Wards
Helping you move forwards

Call Hythe Branch 01303 267473 ■ wardsofkent.co.uk



■ Legal advice should be taken to verify fixtures/fittings, planning, alterations and/or lease details ■ Appliances & services are untested, dimensions are approximate and floor plans are not to scale
■ Through a Homewise Home For Life Plan people aged 60+ can secure this property for up to 50% less, by purchasing a Lifetime Lease.



12824992/20250930/OH/MIB