

65 Harley St.

LIVING ROOMS
THE HOTEL ALTERNATIVE



APT 9 | 2 BED, 1 BATHROOM w WALK IN SHOWER, 1 ENSUITE w WALK IN SHOWER | SQ FT 1033 / SQ M 96 | THIRD FLOOR

[TAKE THE TOUR](#)

PLEASE NOT THERE IS A LIFT AT HARLEY ST.













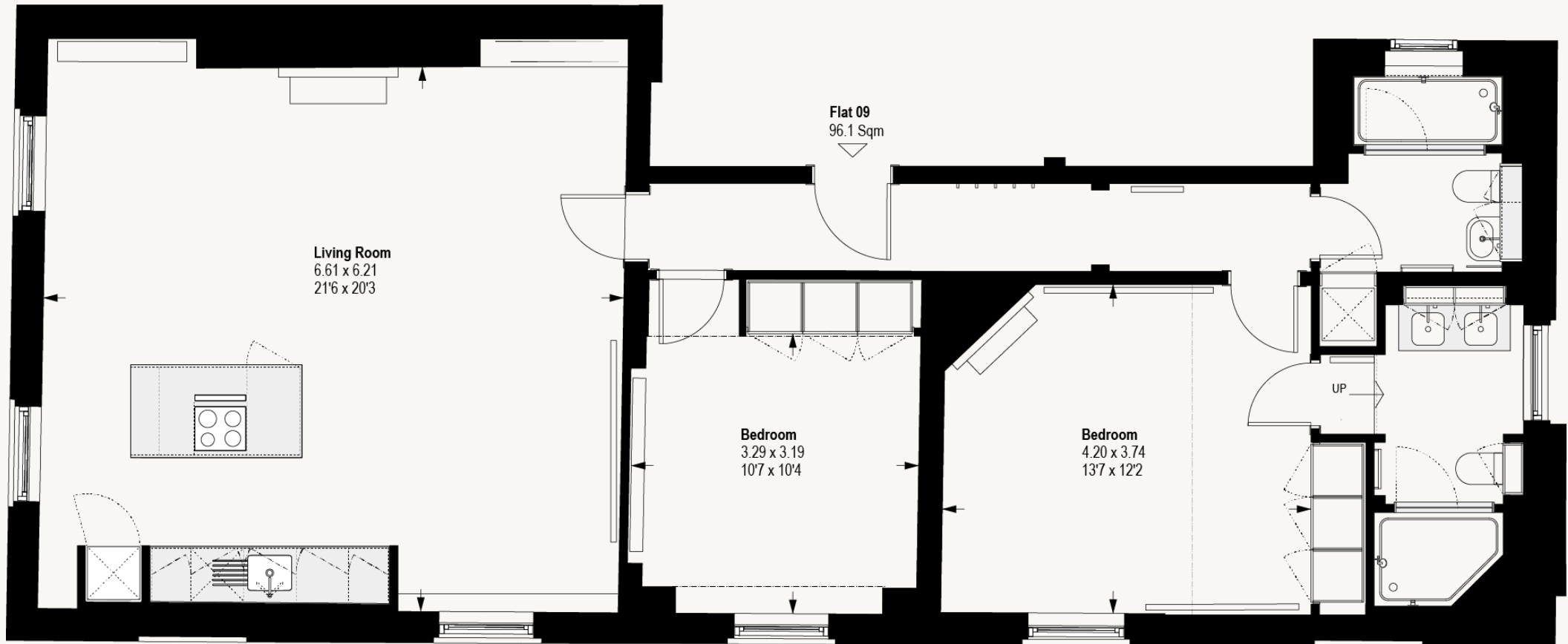








APT 9, THIRD FLOOR
2 BED, 1 BATHROOM w WALK IN SHOWER
ENSUITE w WALK IN SHOWER
SQ FT 1033 / SQ M 96



DESIGN DETAILS

- Building Design by Award-Winning Architects, Barbara Weiss Architects
- Grade II listed building, originally designed by Claude Ferrier
- Interiors designed in collaboration with Waldo Works, featuring antique Persian rugs and bespoke furniture
- Art curated by Laura Bartlett Studio
- Herringbone Wood Flooring Throughout

OUR SERVICES

- Dedicated 24hr Concierge
- Housekeeping Service
- Meet & Greet
- Airport Transfers
- Welcome Provisions on Arrival
- Grocery Shopping Service
- Neighbourhood Guide
- Wash & Fold Service
- Drycleaning Service
- Access to private chefs and more via our partners Hometainment
- Access to private GP services via SOLICE healthcare

OUR TECHNOLOGY

- High-Speed Fibre Broadband
- Marshall Bluetooth Speaker
- Smart TVs
- Secure Door Entry System & 24hr CCTV
- VoIP

OUR NEIGHBOURHOOD

MARYLEBONE

One of London's most charming areas, Marylebone is an inner-city neighbourhood with a village feel. It shuns big name brands instead embracing independent boutiques making it the perfect place to discover something new.





DELAMINA RESTAURANT



PORTLAND



PURL



PENTON'S



CHILTERN FIREHOUSE



DAUNT BOOKS



REGENTS PARK



THE WALLACE COLLECTION



THE ITALIANS



LINA STORES



LOCATION

2 MINUTES TO MARYLEBONE HIGH ST

5 MINUTES TO OXFORD ST

5 MINUTES TO BOND ST

10 MINUTES TO SOHO

TRANSPORT LINKS

5 MINUTES TO

GREAT PORTLAND ST

HAMMERSMITH & CITY, CIRCLE, METROPOLITAN LINES

BOND STREET CENTRAL, JUBILEE LINES

OXFORD CIRCUS VICTORIA, BAKERLOO LINES

GROCERY SHOPS

2 MINUTES TO WAITROSE

3 MINUTES TO SELFRIDGES FOOD HALL

15 MINUTES TO WHOLE FOODS