




JASON SIMMONS POWERED BY **exp**™ **UK**

@ jason.simmons@exp.uk.com

 jasonsimmmons.exp.uk.com

 01477 500 303

Padstow Close, Crewe

£200,000

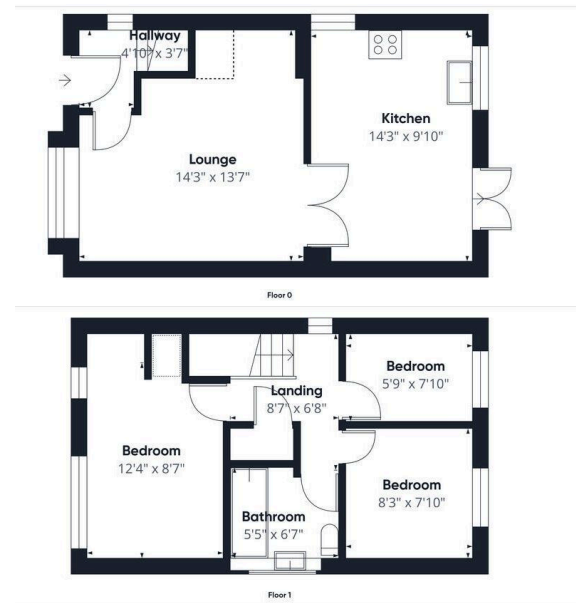
3 1 1

- Three bedroom detached home
- NO ONWARD CHAIN
- Cul-de-sac location
- Lounge with feature fireplace
- Fitted dining kitchen
- Three good-sized bedrooms & well presented bathroom
- Driveway parking & Detached Garage (ideal for home office, play room or gym)
- Double glazing & Central heating throughout
- Enclosed rear garden
- Quote Ref: JS0070



A well-presented three-bedroom detached home, offered for sale with no onward chain, situated in a quiet cul-de-sac location in Crewe. The accommodation briefly comprises an entrance hallway, a good-sized lounge, a spacious dining kitchen, three well-proportioned bedrooms and a family bathroom. Externally, the property benefits from a pleasant position within this popular residential area. Conveniently located close to local shops, amenities and well-regarded schools, this property would make an ideal family home or for a first time buyer.





Find an energy certificate (E) English | [Cymraeg](#)

Energy performance certificate (EPC)

7. Robinson Close CNRWE CWT 3000	Energy rating C	Valid until 15 May 2028
	Certificate number 0301-2885-7064-9098-8895	

Property type Detached house

Total floor area 62 square metres

Rules on letting this property

Properties can be let if they have an energy rating from A to E.

You can read [guidance for landlords on the regulations and exemptions](#) (<http://www.gov.uk/guidance/landmark-crenlake>) and [guidance for tenants on the regulations and exemptions](#) (<http://www.gov.uk/guidance/landmark-crenlake>).

Energy rating and score

This property's energy rating is C. It has the potential to be B.

[See how to improve this property's energy efficiency.](#)

eXp World UK Ltd is a registered company at Level 37, 25 Canada Square, London, E14 5LQ.

Registered company number is 12016573. VAT Registration Number is 327 4120 29