



Chiltern Street
Marylebone, W1U

CHESTERTONS





A stunning lateral flat located on the upper floor within this popular portered mansion block. This property offers three bedrooms, two bathrooms (one of which is en-suite), a large reception room and a separate kitchen with built-in appliances. The property benefits from high ceilings and wooden flooring throughout.

Portman Mansions is an impressive red-brick Victorian Mansion building in the heart of Marylebone. The Mansions benefit from a 24-hour porter service, lift access and secure entry as well as access to a resident's gym & sauna in an adjacent block.

Located in the heart of Marylebone, perfectly situated on the ever-popular Chiltern Street, close to the famous shops and cafes of Marylebone High Street, the bright lights of the West End and the green open spaces of Regent's Park. Excellent transport links are close by, including Baker Street Station (Jubilee, Metropolitan, Hammersmith and City, Bakerloo, and Circle Lines) as well as multiple bus routes to Oxford Street and Park Lane.

VIRTUALLY STAGED

- Three Double Bedrooms
- Two Bathrooms (One En-suite)
- Separate Kitchen
- Lift
- 1,206 Sq Ft Approximately
- On Site Gym and Sauna

£6,283.33 pcm

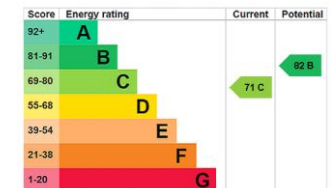
Additional tenant charges apply (fees apply to non-AST tenancies only)

Tenancy Agreement Fee: £300

References per Tenant/Guarantor: £60

Inventory check (approx. £100 – £250 inc. VAT)

[chestertons.co.uk/property-to-rent/applicable-fees](https://www.chestertons.co.uk/property-to-rent/applicable-fees)



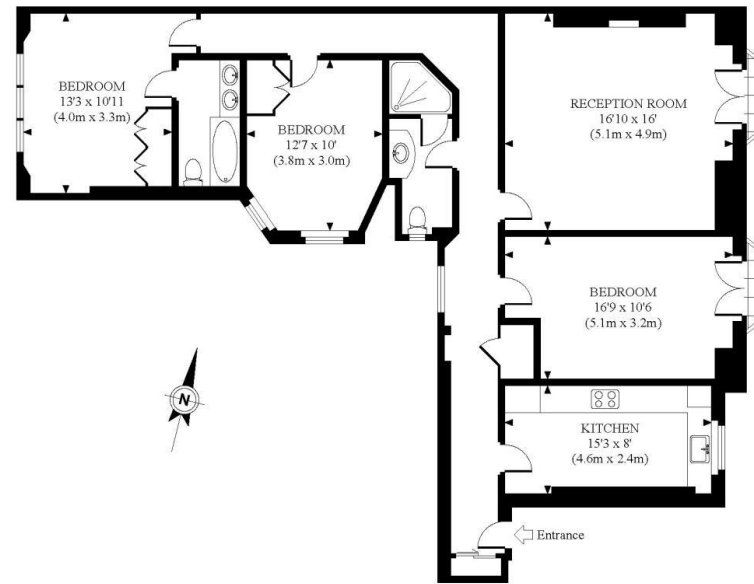
Minimum Term: 12 months
Deposit Required: Five weeks
Local Authority: Westminster
Council Tax Band: G
EPC Rating: C
Unfurnished

Chestertons Marylebone Lettings

20a Paddington Street
 London
 W1U 5QP

[chestertons.co.uk](https://www.chestertons.co.uk)

Portman Mansions
London, W1U



FOURTH FLOOR
GROSS INTERNAL
FLOOR AREA 1206 SQ FT

APPROX. GROSS INTERNAL FLOOR AREA 1206 SQ FT / 112 SQ M

Chesterton UK Services Limited trading as Chestertons for themselves and for the vendor of this property whose agents they are, give notice that (i) these particulars do not constitute any part of an offer or contract, (ii) all statements contained within these particulars are made without responsibility on the part of Chestertons or the vendor, (iii) whilst made in good faith, none of the statements contained within these particulars are to be relied upon as a statement or representation of fact, (iv) any intending purchasers must satisfy themselves by inspection or otherwise as to the correctness of each of the statements contained within these particulars, (v) the vendor does not make or give either Chestertons or any person in their employment any authority to make or give representation or warranty whatsoever in relation to this property. Wide angle lenses may be used. ©Copyright Chestertons | Chesterton Global Ltd | Registered Office 40 Connaught Street, Hyde Park, London W2 2AB Registered Company Number 05334580.



This paper is
100% recyclable