



## Boyd Street, E1 £550,000

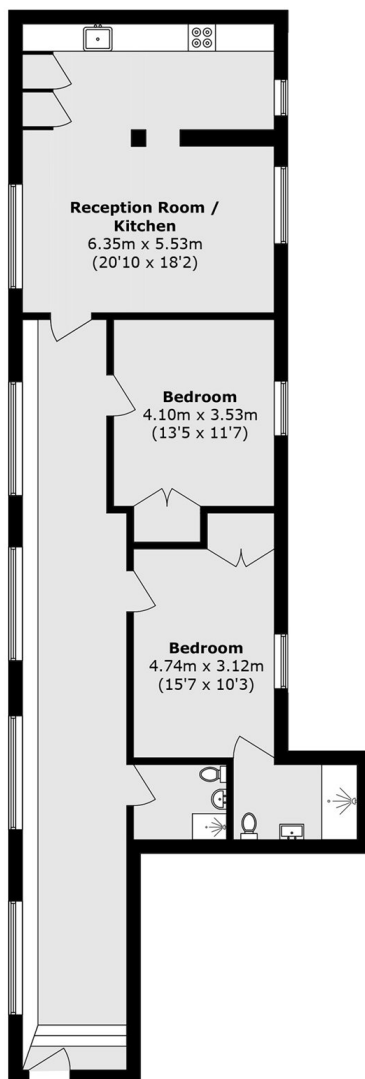
A large, bright warehouse conversion featuring bare brick walls, steel supporting beams and hardwood flooring. This property offers an expansive, open plan reception/kitchen with built in appliances and plenty of natural light, and two double bedrooms. Both bedrooms provide bespoke, built-in storage, and the principle bedroom has an en suite, with a second family bathroom found further down the hall. The feature hallway is significant in size allowing for tons of natural light and plenty of additional storage for the resident.

Boyd Street is located in Aldgate, offering a vast selection of restaurants, bars, and cafés. This central location makes travel throughout the City easy, with both Aldgate East (Hammersmith&City, District), Liverpool Street (Elizabeth) and Shadwell (Windrush, DLR) all nearby.

### Features

- Warehouse Conversion
- Two Double Bedrooms
- Two Bathrooms
- Original Features
- Hardwood Flooring
- Share of Freehold

# Boyd Street, London, E1



Total area (approx.): 113.7 sq. m (1223.8 sq. ft)