

Property ref: 105439

Projection West, Reading, RG1 1ET

£1,400 PCM

HASLAM'S
Lettings



A two double-bedroom town centre apartment finished to a high standard and located just a short walk from Reading station. Reading Borough Council tax band C.
Please note: The balcony is currently out of use due to the external building works
Water supply: Mains
Drainage info: Mains
Electricity supply: Mains
Broadband/Mobile Info: Connections available. For an indication of specific speeds and supply of Broadband and Mobile, we advise applicants go to the Ofcom website 'Broadband and Mobile Coverage Checker'.

- Open-plan living room; No parking
- Kitchen with integrated appliances
- Bathroom with shower over bath; Master with en-suite
- Electric heating; £40pcm additional sundry for water
- First floor position; EPC rating B
- Furnished; Managed by LANDLORD

Available Now

*Fees For Assured Shorthold Tenancies: when you rent a property from us you will be required to pay a sum equivalent to one weeks' rent for a holding deposit. Upon successful application, this amount will be off set against your first months' rent. You will also be required to pay a security deposit equivalent to 5 weeks' rent which will be held and protected in line with Deposit legislation. For more information about our fees please visit: www.haslams.net
Fees for all other tenancies (Non Housing Act Tenancies / Company Lets): when you rent a property from us we will charge you a one-off fee per property. This charge is the equivalent of 15 days of the monthly rental charge (+VAT) with a minimum fee of £450 (inc.VAT) up to a maximum of £650 (inc.VAT). Other fees may apply depending on your circumstances.

0118 960 1055

lettings@haslams.net www.haslams.net

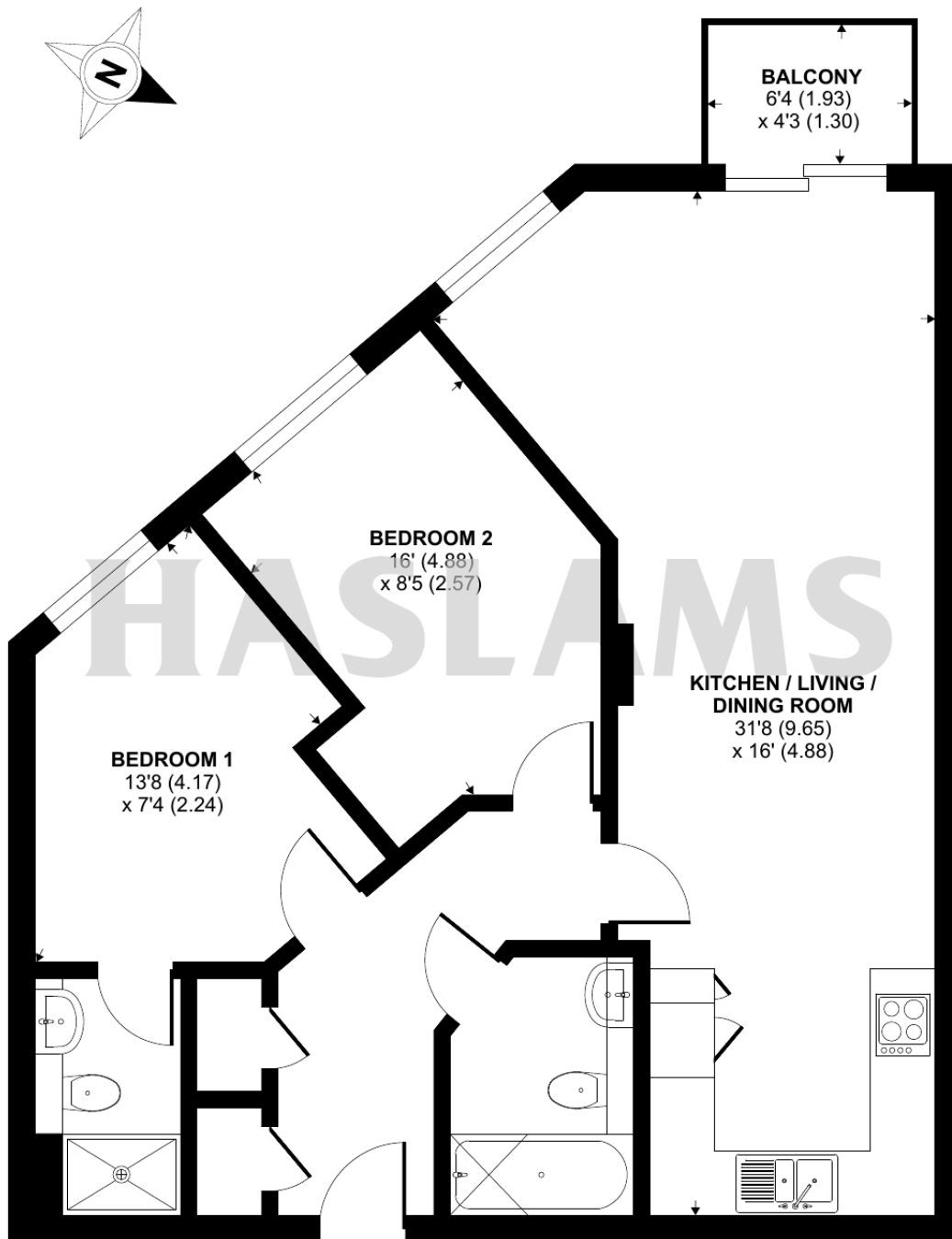
Haslams Estate Agents Ltd, 159 Friar Street, Reading, Berkshire, RG1 1HE



Projection West, Merchants Place, Reading, RG1

Approximate Area = 760 sq ft / 70.6 sq m

For identification only - Not to scale



FIRST FLOOR



Floor plan produced in accordance with RICS Property Measurement Standards incorporating International Property Measurement Standards (IPMS2 Residential). © ncheom 2024. Produced for Haslams. REF: 1158065