



## Church Road, TW9

£2,350 Per calendar month

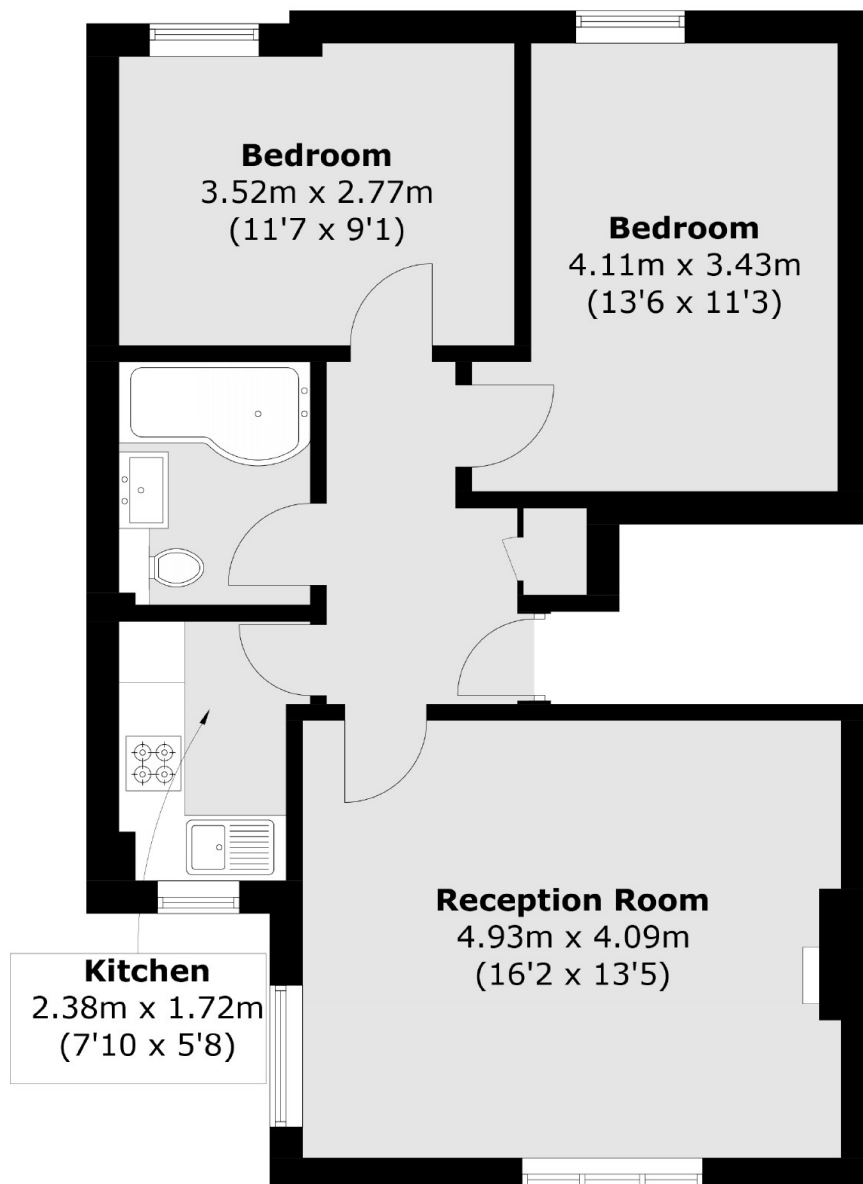
A spacious top floor two-bedroom conversion flat located in central Richmond moments from Richmond Station and the town centre. The property offers recently renovated kitchen and bathroom, ample storage and a reception room with feature fireplace.

Church Road leads from Richmond town centre to Richmond Hill and less than a third of a mile from Richmond train/tube station.

### Features

- Two Double Bedrooms
- Top Floor
- Modern Kitchen
- Bright and Spacious
- Ample Storage
- Large Reception Room

# Church Road, Richmond, TW9



Total area (approx.): 57.4 sq. m 617.8 sq. ft)