



## Fulham High Street, SW6

£450,000

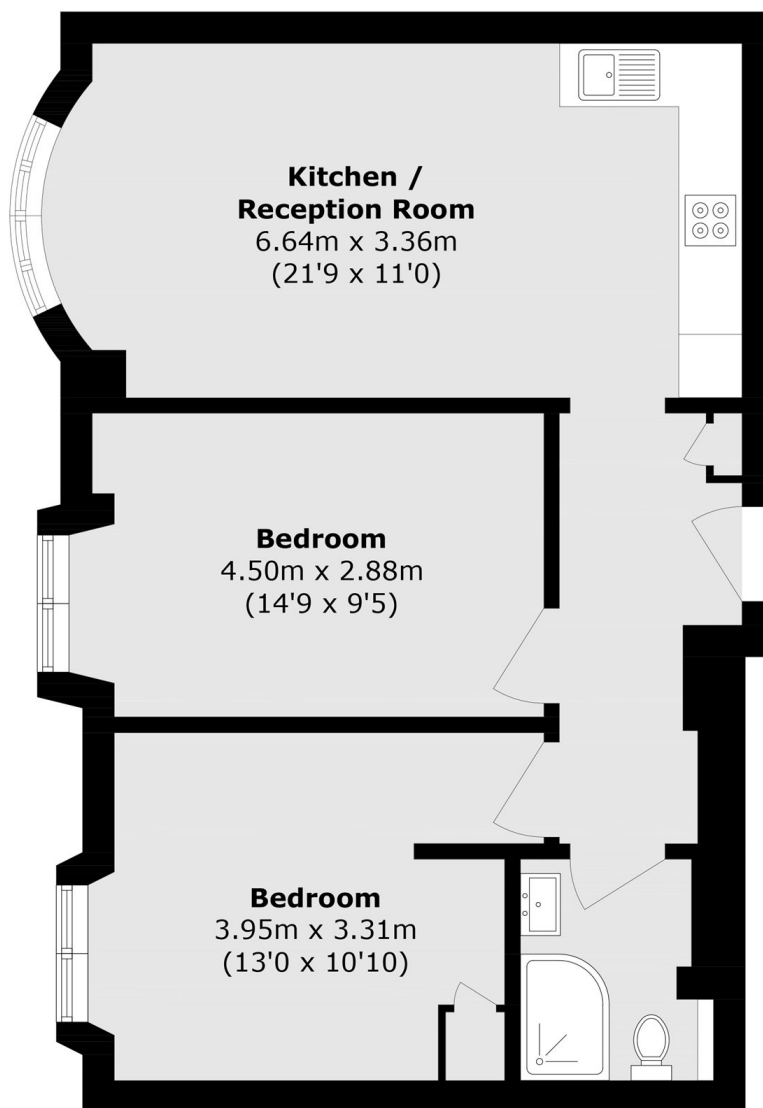
This beautifully presented two bedroom apartment arranged over one floor is situated in Parkview Court, a sought after 1920s mansion block on Fulham High Street.

Located just moments from the green open spaces of Bishops Park and the River Thames. An array of independent shops, bars, and popular restaurants are on your doorstep along the high street and nearby Parsons Green.

### Features

- Lift Access
- Secure Development
- Porter
- Open Plan Kitchen/Reception
- Bay Window
- Fantastic Location

# Fulham High Street, London, SW6



## First Floor

Total area (approx.): 60.1 sq. m (646.9 sq. ft)