



37 Broadview Close

Kingsnorth Ashford, TN25 7AQ

Price £220,000

Offered for sale with no onward chain is this excellent ground floor apartment on the popular Bridgefield development in Kingsnorth.

The property comprises an entrance hall, sitting/dining room, kitchen, two double bedrooms and bathroom/WC.

The property enjoys the unique benefit of a private courtyard along with gas central heating, double glazing and allocated parking.

Leasehold - Balance of 125 Years from 2012

Management Charge: £2,350

Annual Ground Rent - £200

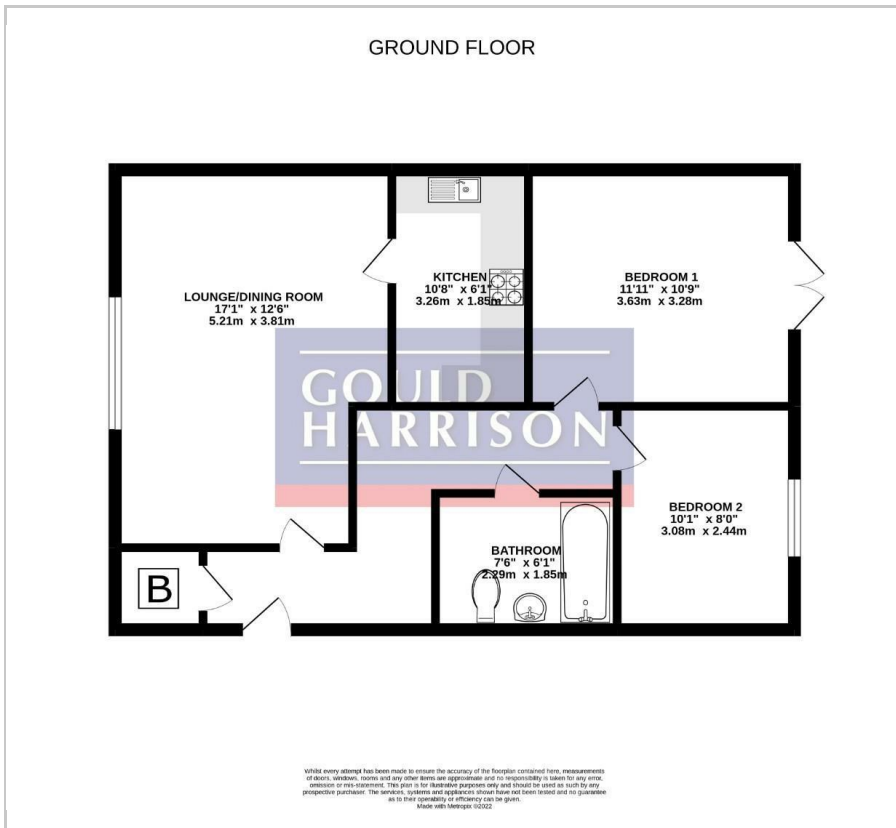
Viewing

Please contact our Ashford Office on 01233 646411 if you wish to arrange a viewing appointment for this property or require further information.

- MODERN APARTMENT
- GROUND FLOOR
- TWO DOUBLE BEDROOMS
- PRIVATE COURTYARD
- ALLOCATED PARKING
- NO ONWARD CHAIN
- LEASEHOLD - BALANCE OF 125 YEARS FROM 2012
- ANNUAL SERVICE CHARGE £2,350
- GROUND RENT £250
- EPC RATING - B (82)



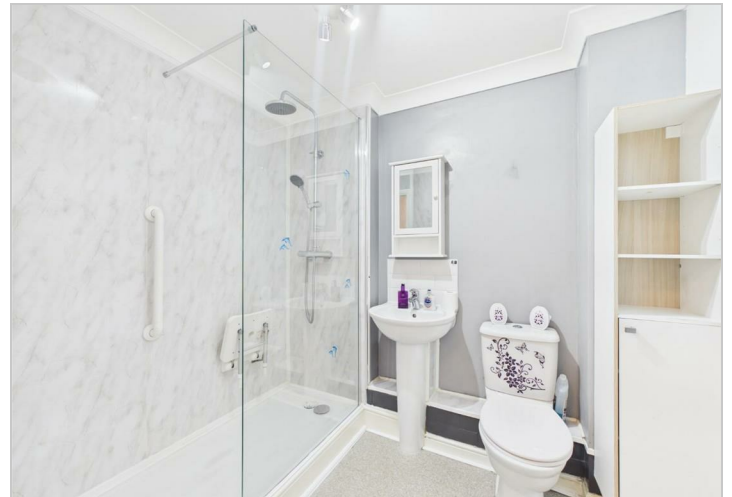
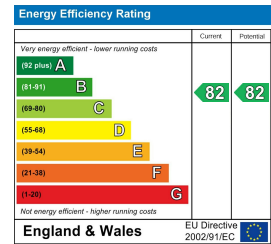
Floor Plan



Area Map



Energy Efficiency Graph



These particulars, whilst believed to be accurate are set out as a general outline only for guidance and do not constitute any part of an offer or contract. Intending purchasers should not rely on them as statements of representation of fact, but must satisfy themselves by inspection or otherwise as to their accuracy. No person in this firm's employment has the authority to make or give any representation or warranty in respect of the property.