



**POOLE
TOWNSEND**

Athol Street, Barrow-In-Furness, LA14 2QT

£85,000

3 1 2



Conveniently situated for BAE Systems and the nearby amenities, this terraced home will appeal to investors, first-time purchasers and buyers looking for a home that can be further improved. The accommodation features a lounge and dining space with central staircase, fitted kitchen, rear hallway with access to the yard and a second door leading into the ground floor bathroom. The first floor comprises two double bedrooms with the second bedroom giving access to a single bedroom or dressing room/nursery. Other features to note about the house are the gas-fired central heating system, double glazing and no upper chain.

Location

What3Words///solid.leaned.moral

Description

This mid-terraced home provides an open lounge/dining room which is partially divided by the central staircase. The second reception area, which is alongside the kitchen, has a fireplace to the front of the chimney breast with an electric fire set within.

The kitchen has wall and base cabinets with a white gloss finish to the panelled door fronts and a contrasting coloured worktop with inset sink. There is space for a gas cooker, plumbing for a washing machine, a wall vent for a tumble dryer and space for an upright fridge freezer.

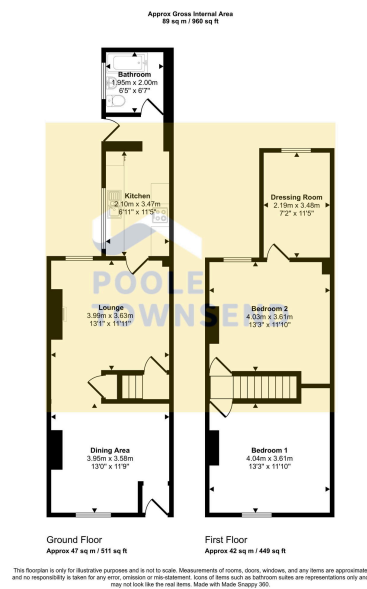
Beyond the kitchen is a rear hall with an external door leading you into the yard and a second door that accesses the ground floor bathroom. There is a shell style suite, finished in white with chrome effect fittings. There is a WC, hand basin and also a bath which has a shower attachment to the taps. The room is tiled throughout.

There is stepped access from the top of the staircase into the two double bedrooms. The second bedroom has access into a third bedroom that could also be used as a nursery, walk-in wardrobe/dressing room or home office.

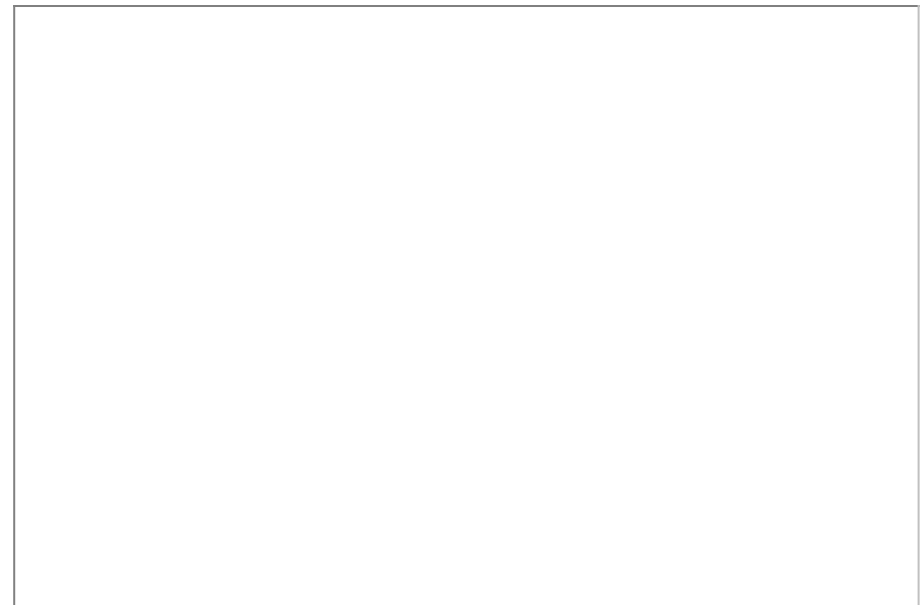
Tenure

Freehold





- 3 Bed Terraced House
- Convenient To BAE
- Appeal To Investors/First Time Buyers
- Features A Lounge And Dinning Space
- Fitted Kitchen
- Two Double Bedrooms
- One Single Bedroom or dressing room/ nursery
- Double Glazing
- NO UPPER CHAIN!
- New Roof In The Last Month



Visit us at
www.pooletownsend.co.uk
enquiries@pooletownsend.co.uk

We are open
 Monday – Friday 9.00 – 5.00
 Saturday 9.00 – 1.00

Barrow 01229 811811
 Ulverston 01229 588111
 Grange 015395 33316
 Kendal 01539 734455
 Milnthorpe 015395 62044